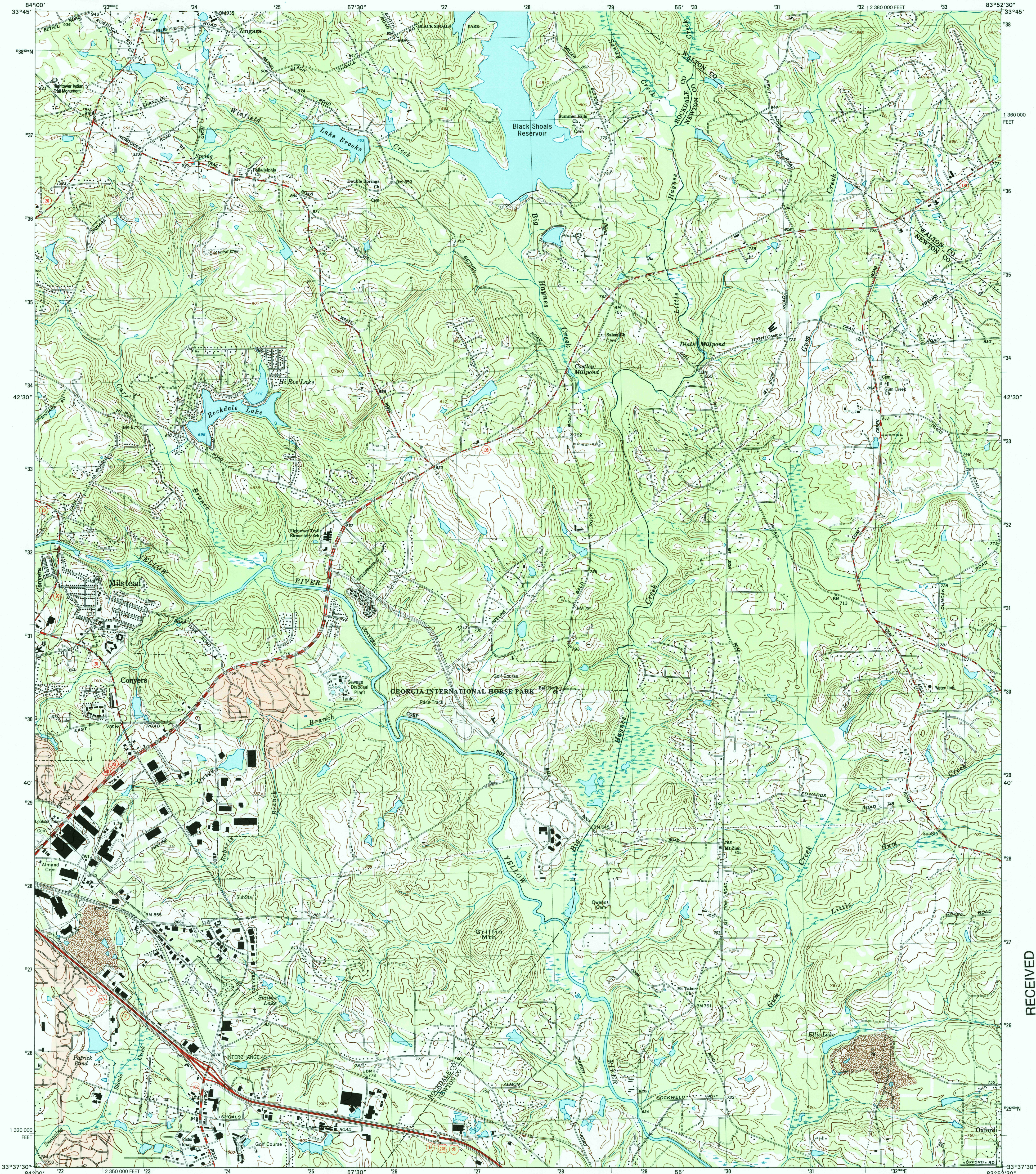


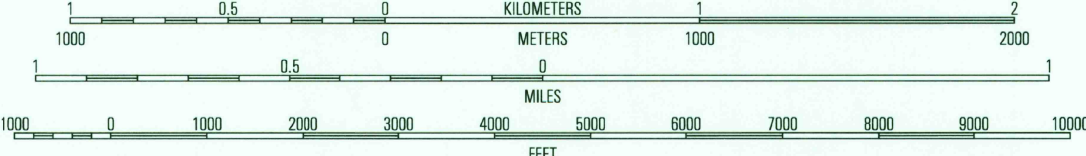
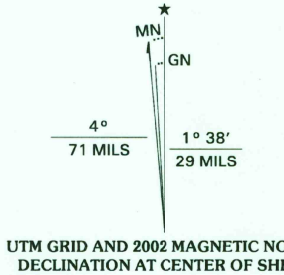


U.S. DEPARTMENT OF THE INTERIOR
U.S. GEOLOGICAL SURVEY

MILSTEAD QUADRANGLE
GEORGIA
7.5-MINUTE SERIES (TOPOGRAPHIC)



Produced by the United States Geological Survey
Topography compiled 1962. Planimetry derived from imagery taken 1999 and other sources. Survey control current as of 1964. Boundaries current as of 2002.
North American Datum of 1983 (NAD 83). Projection and 1 000-meter grid: Universal Transverse Mercator, zone 17 10 000-foot ticks: Georgia Coordinate System of 1983 (west zone)
North American Datum of 1927 (NAD 27) is shown by dashed corner ticks. The values of the shift between NAD 83 and NAD 27 for 7.5-minute intersections are obtainable from National Geodetic Survey NADCON software



CONTOUR INTERVAL 20 FEET
NATIONAL GEODETIC VERTICAL DATUM OF 1929
(THE DIFFERENCE BETWEEN THE NORTH AMERICAN VERTICAL DATUM OF 1929 AND THE NORTH AMERICAN VERTICAL DATUM OF 1983 IS MINIMAL)
TO CONVERT FROM FEET TO METERS, MULTIPLY BY 0.3048

THIS MAP COMPLIES WITH NATIONAL MAP ACCURACY STANDARDS
FOR SALE BY U.S. GEOLOGICAL SURVEY, P.O. BOX 25286, DENVER, COLORADO 80225
A FOLDER DESCRIBING TOPOGRAPHIC MAPS AND SYMBOLS IS AVAILABLE ON REQUEST



1	2	3	1 Snellville
4	5	3 Between	2 Loganville
6	7	4 Conyers	5 Jersey
		6 Kellystown	7 Porterdale
			8 Covington

ROAD CLASSIFICATION
Primary highway
hard surface
Secondary highway
hard surface
Light-duty road, hard or
improved surface
Unimproved road
Interstate Route
U.S. Route
State Route

MILSTEAD, GA

1999

NIMA 4251 III NW-SERIES V845

RECEIVED

2002

USGS NMD

USGS NMD MAP ARCHIVES

