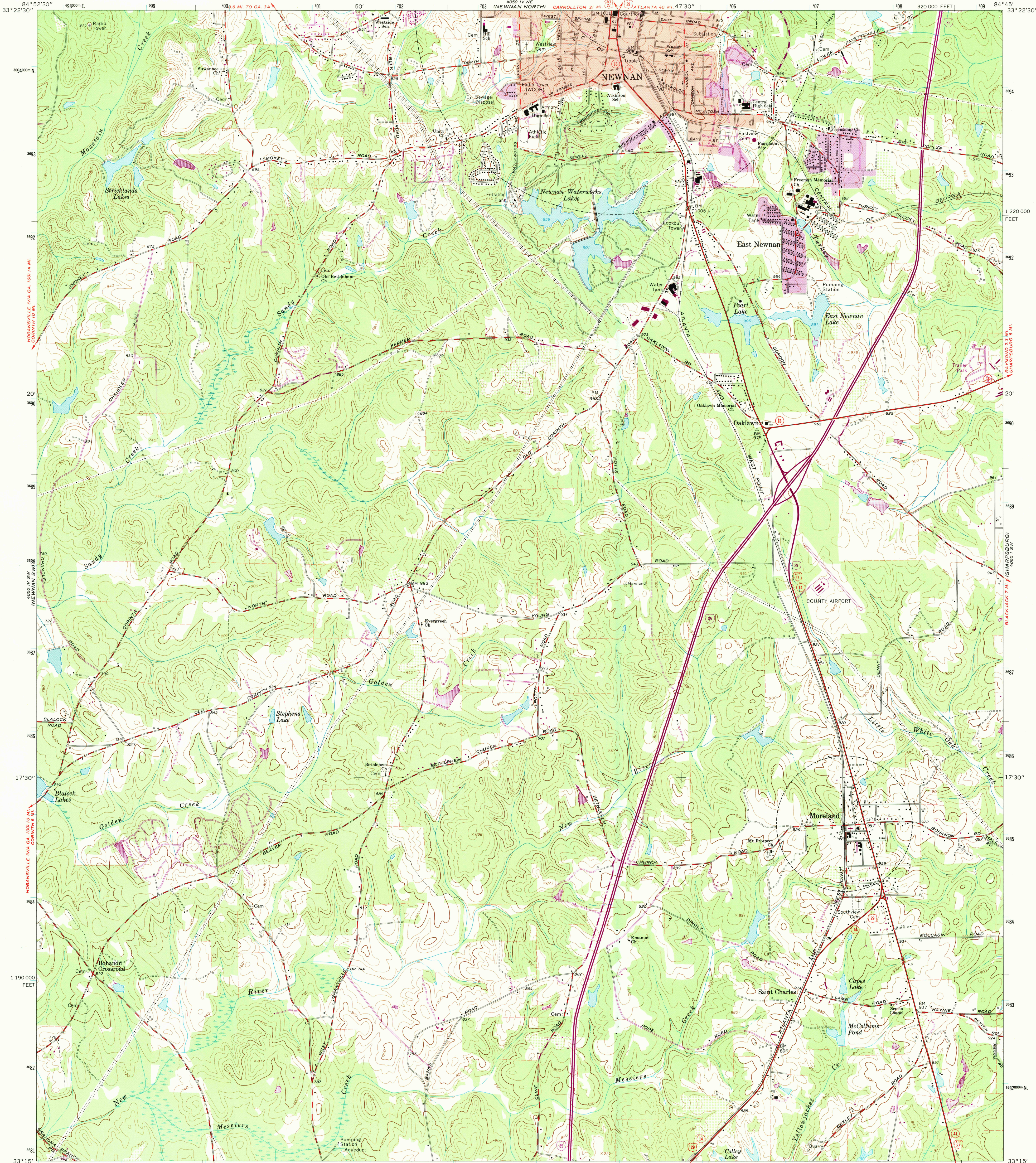
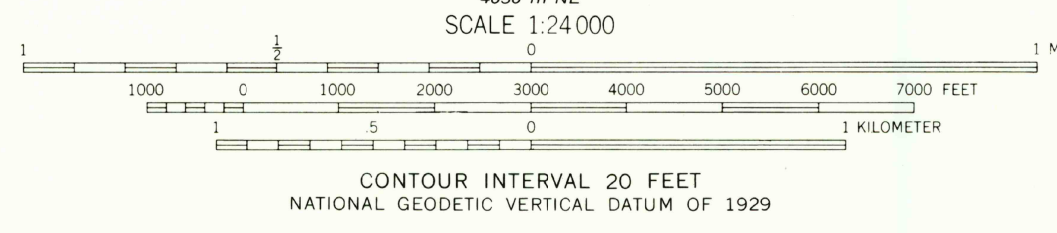
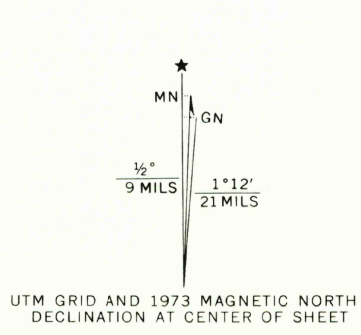


UNITED STATES  
DEPARTMENT OF THE INTERIOR  
GEOLOGICAL SURVEY

NEWMAN SOUTH QUADRANGLE  
GEORGIA—COWETA CO.  
7.5 MINUTE SERIES (TOPOGRAPHIC)

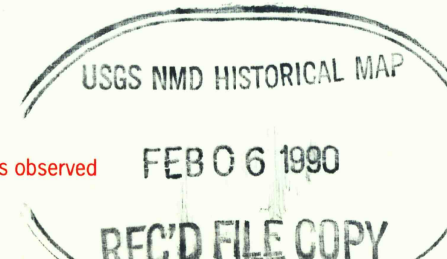


Mapped, edited, and published by the Geological Survey  
Control by USGS, USC&GS, and Georgia Geodetic Survey  
Topography by photogrammetric methods from aerial photographs  
taken 1962. Field checked 1965  
Polyconic projection. 1927 North American datum  
10,000-foot grid based on Georgia coordinate system, west zone  
1000-meter Universal Transverse Mercator grid ticks, zone 16,  
shown in blue  
Fine red dashed lines indicate selected fence and field lines where  
generally visible on aerial photographs. This information is unchecked  
Red tint indicates area in which only landmark buildings are shown  
Revisions shown in purple compiled in cooperation with  
State of Georgia agencies from aerial photographs  
taken 1973. This information not field checked  
Purple tint indicates extension of urban areas



THIS MAP COMPLIES WITH NATIONAL MAP ACCURACY STANDARDS  
FOR SALE BY U.S. GEOLOGICAL SURVEY  
DENVER, COLORADO 80225 OR RESTON, VIRGINIA 22092  
A FOLDER DESCRIBING TOPOGRAPHIC MAPS AND SYMBOLS IS AVAILABLE ON REQUEST

Map photoinspected 1981  
No major culture or drainage changes observed



NEWMAN SOUTH, GA.  
N3315-W8445/7.5  
PHOTOINSPECTED 1981  
1965  
PHOTOREVISED 1973  
AMS 4050 IV SE—SERIES V845