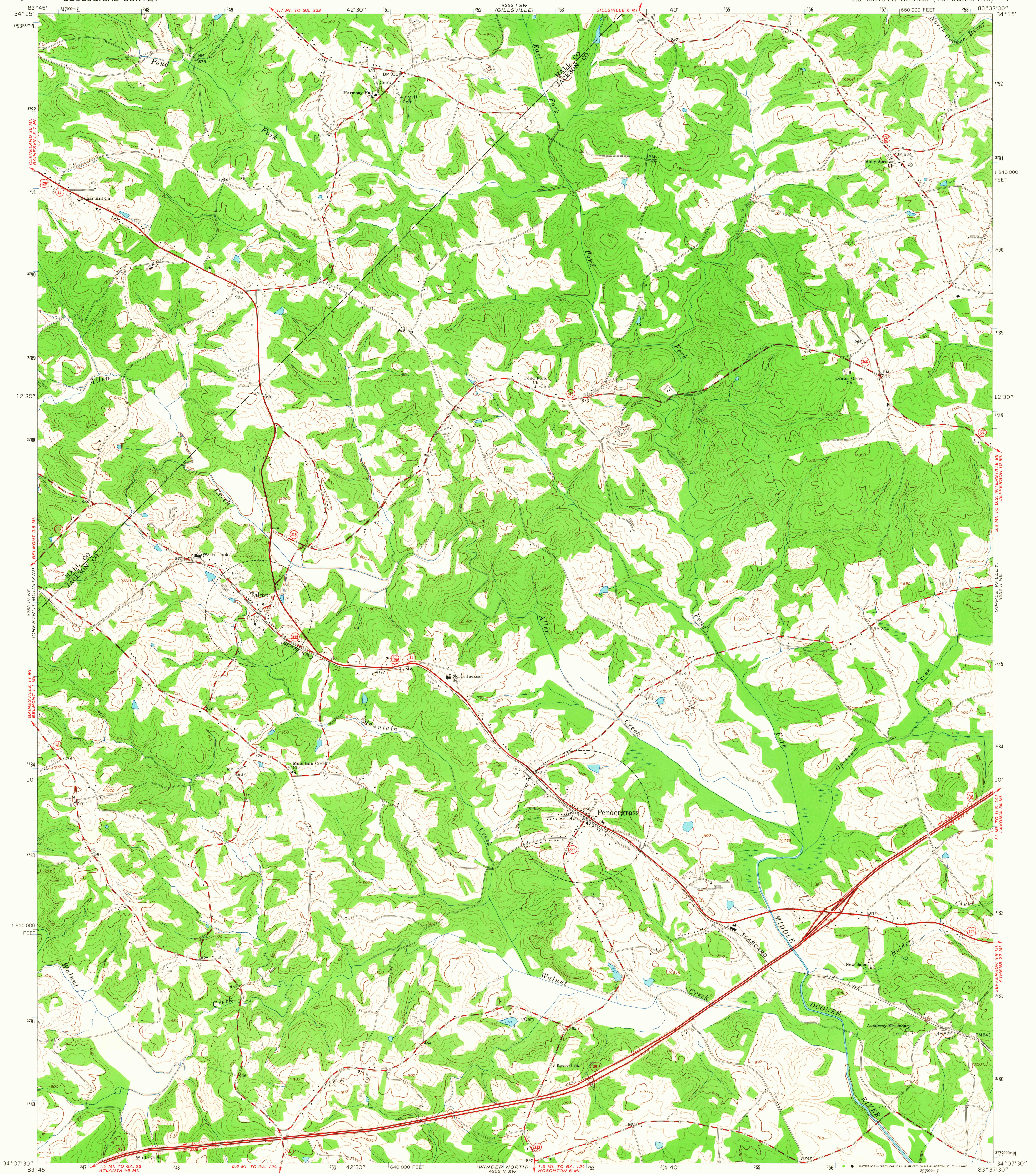
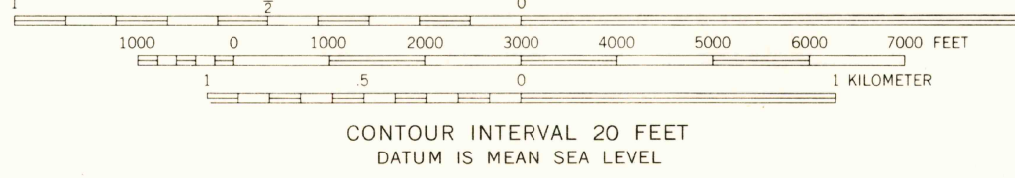
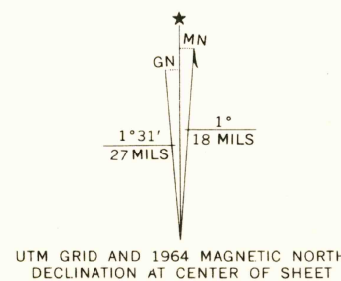


UNITED STATES
DEPARTMENT OF THE INTERIOR
GEOLOGICAL SURVEY

PENDERGRASS QUADRANGLE
GEORGIA
7.5 MINUTE SERIES (TOPOGRAPHIC)



Mapped, edited, and published by the Geological Survey
Control by USGS, USC&GS, and Georgia Geodetic Survey
Topography by photogrammetric methods from aerial
photographs taken 1956, 1958, and 1963. Field checked 1964
Polyconic projection. 1927 North American datum
10,000-foot grid based on Georgia coordinate system, west zone
1000-meter Universal Transverse Mercator grid ticks,
zone 17, shown in blue
Fine red dashed lines indicate selected fence and field lines where
generally visible on aerial photographs. This information is unchecked



USGS
Historical File
Topographic Division



ROAD CLASSIFICATION	
Heavy duty	Light duty
Medium-duty	Unimproved dirt
Interstate Route	U.S. Route
	State Route

U.S.G.S.
FILE COPY
TOPOGRAPHIC DIVISION

PENDERGRASS, GA.
N3407.5-W8337.5/7.5
1964
AMS 4252 II NW-SERIES V845

SEP 14 1965
2745