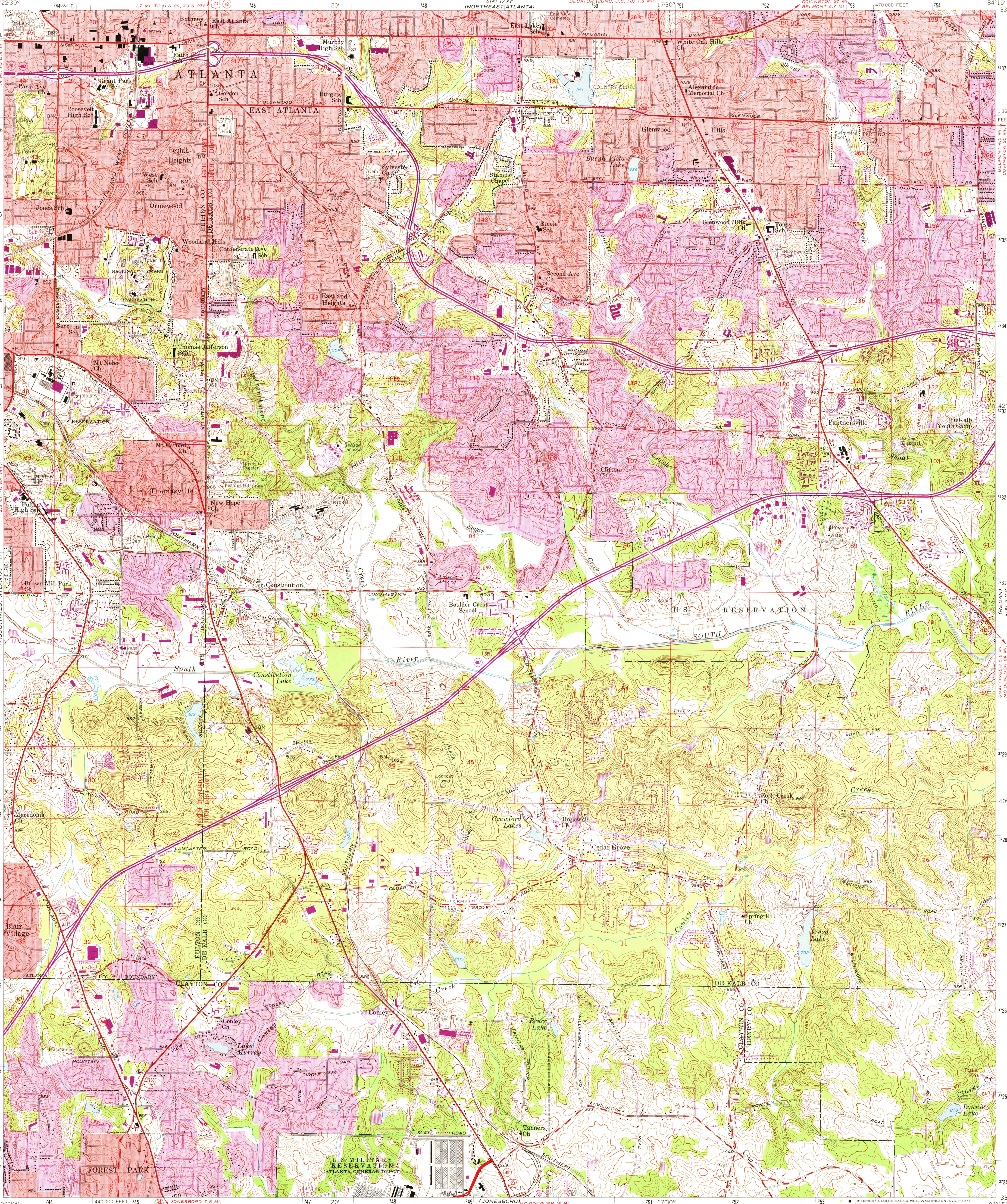
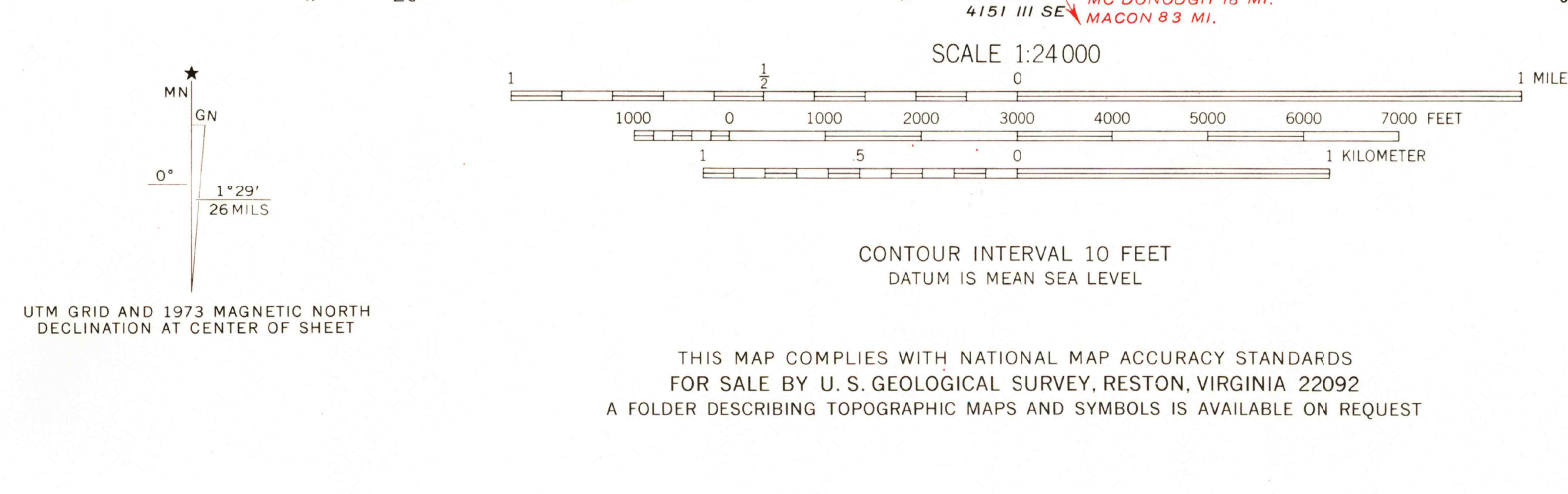


UNITED STATES
DEPARTMENT OF THE INTERIOR
GEOLOGICAL SURVEY

SOUTHEAST ATLANTA QUADRANGLE
GEORGIA
7.5 MINUTE SERIES (TOPOGRAPHIC)



Maped, edited, and published by the Geological Survey
Control by USGS, USC&GS, Georgia Geodetic Survey,
and City of Atlanta
Topography from aerial photographs by stereoplanograph
Aerial photographs taken 1952. Field check 1954
Polyconic projection. 1927 North American datum
10,000-foot grid based on Georgia coordinate system, west zone
1000-meter Universal Transverse Mercator grid ticks,
zone 16, shown in blue
Red tint indicates areas in which only landmark buildings are shown
Land lines from information supplied by
Atlanta-Fulton County Joint Planning Board and
De Kalb County Department of Planning
Revisions shown in purple compiled from aerial photographs
taken 1968 and 1973. This information not field checked
Purple tint indicates extension of urban areas



ROAD CLASSIFICATION
Heavy-duty ——— Light-duty ———
Medium-duty ——— Unimproved dirt ———
Interstate Route ——— U. S. Route ——— State Route ———
QUADRANGLE LOCATION
USGS
Historical File
Topographic Division
SOUTHEAST ATLANTA, GA.
(FORMERLY CONLEY)
N3337.5—W8415/7.5
1954
PHOTOREVISED 1968 AND 1973
AMS 4151 III NE—SERIES V845

MAR 3 1975