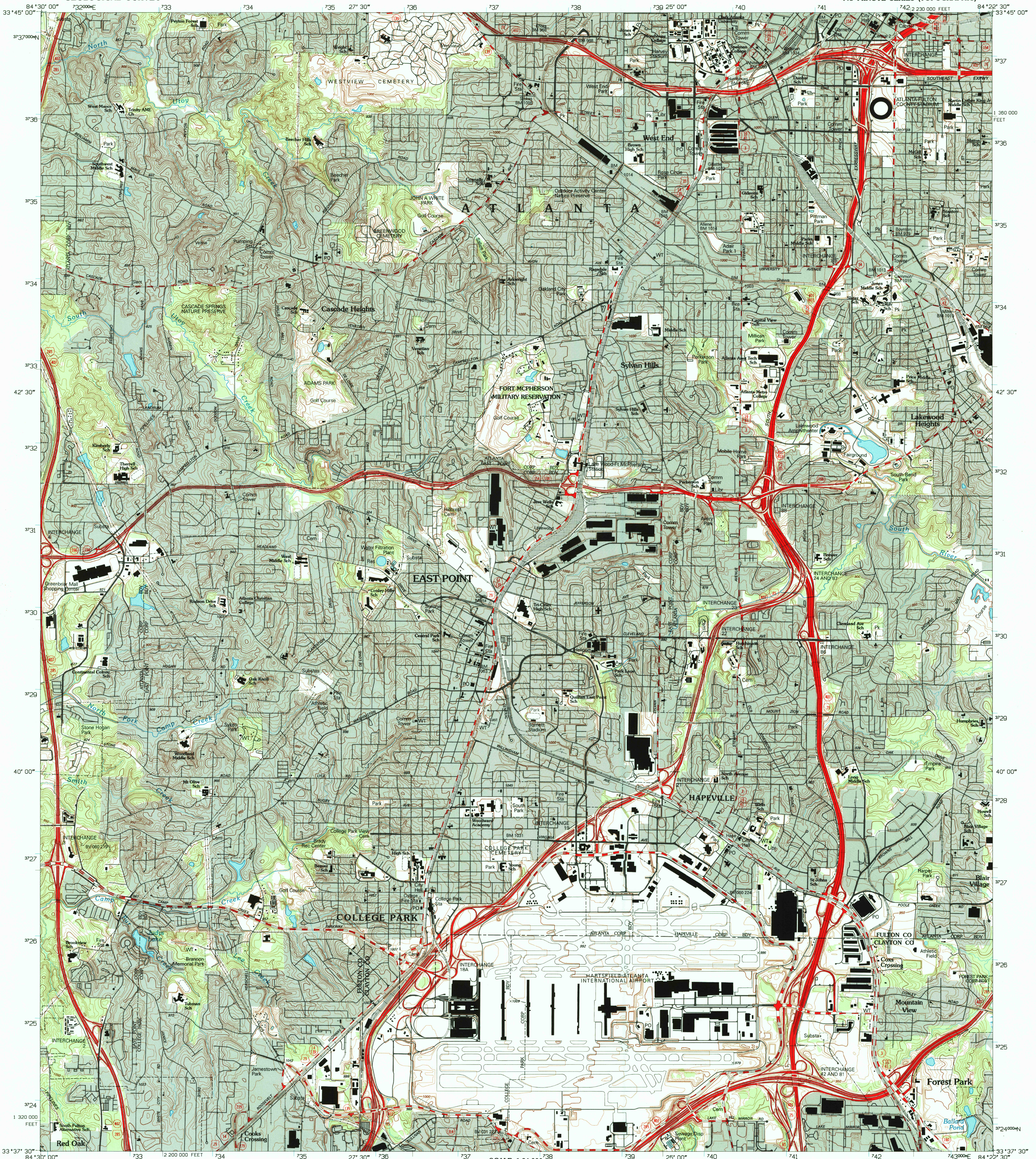
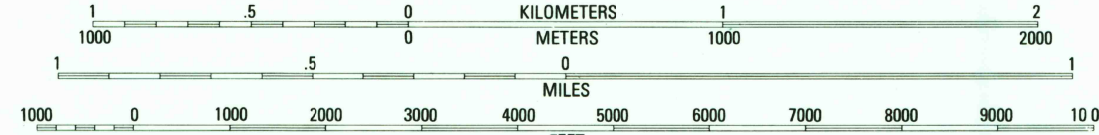
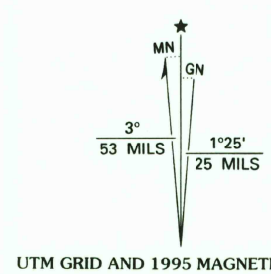


UNITED STATES
DEPARTMENT OF THE INTERIOR
GEOLOGICAL SURVEY

SOUTHWEST ATLANTA QUADRANGLE
GEORGIA
7.5 MINUTE SERIES (TOPOGRAPHIC)



Produced by the United States Geological Survey
Compiled from imagery dated 1993 and other sources
Field checked 1990. Map edited 1995
North American Datum of 1983 (NAD 83). Projection and
blue 1000-meter grid ticks: Universal Transverse Mercator, zone 16
10 000-foot ticks: Georgia Coordinate System of 1983 (west zone)
North American Datum of 1927 (NAD 27) is shown by dashed
corner ticks. The values of the shift between NAD 83 and NAD 27
for 7.5-minute intersections are obtainable from National Geodetic
Survey NADCON software
There may be private inholdings within the boundaries of
the National or State reservations shown on this map.



CONTOUR INTERVAL 10 FEET
NATIONAL GEODETIC VERTICAL DATUM OF 1929

THIS MAP COMPLIES WITH NATIONAL MAP ACCURACY STANDARDS
FOR SALE BY U.S. GEOLOGICAL SURVEY
DENVER, COLORADO 80225, OR RESTON, VIRGINIA 22092
A FOLDER DESCRIBING TOPOGRAPHIC MAPS AND SYMBOLS IS AVAILABLE ON REQUEST



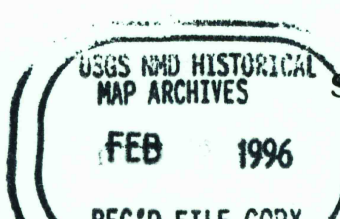
QUADRANGLE LOCATION

1	2	3	1 Mableton
2	3	4	2 Northwest Atlanta
3	4	5	3 Northeast Atlanta
4	5	6	4 Ben Hill
5	6	7	5 Southeast Atlanta
6	7	8	6 Fairburn
			7 Riverdale
			8 Jonesboro

ADJOINING 7.5' QUADRANGLE NAMES

ROAD CLASSIFICATION
Primary highway, hard surface
Secondary highway, hard surface
Interstate Route
U.S. Route
State Route

Light-duty road, hard or improved surface
Unimproved road
U.S. Route
State Route



SOUTHWEST ATLANTA, GA
33084-F4-TF-024
1993
DMA 4151 III NW-SERIES V845

