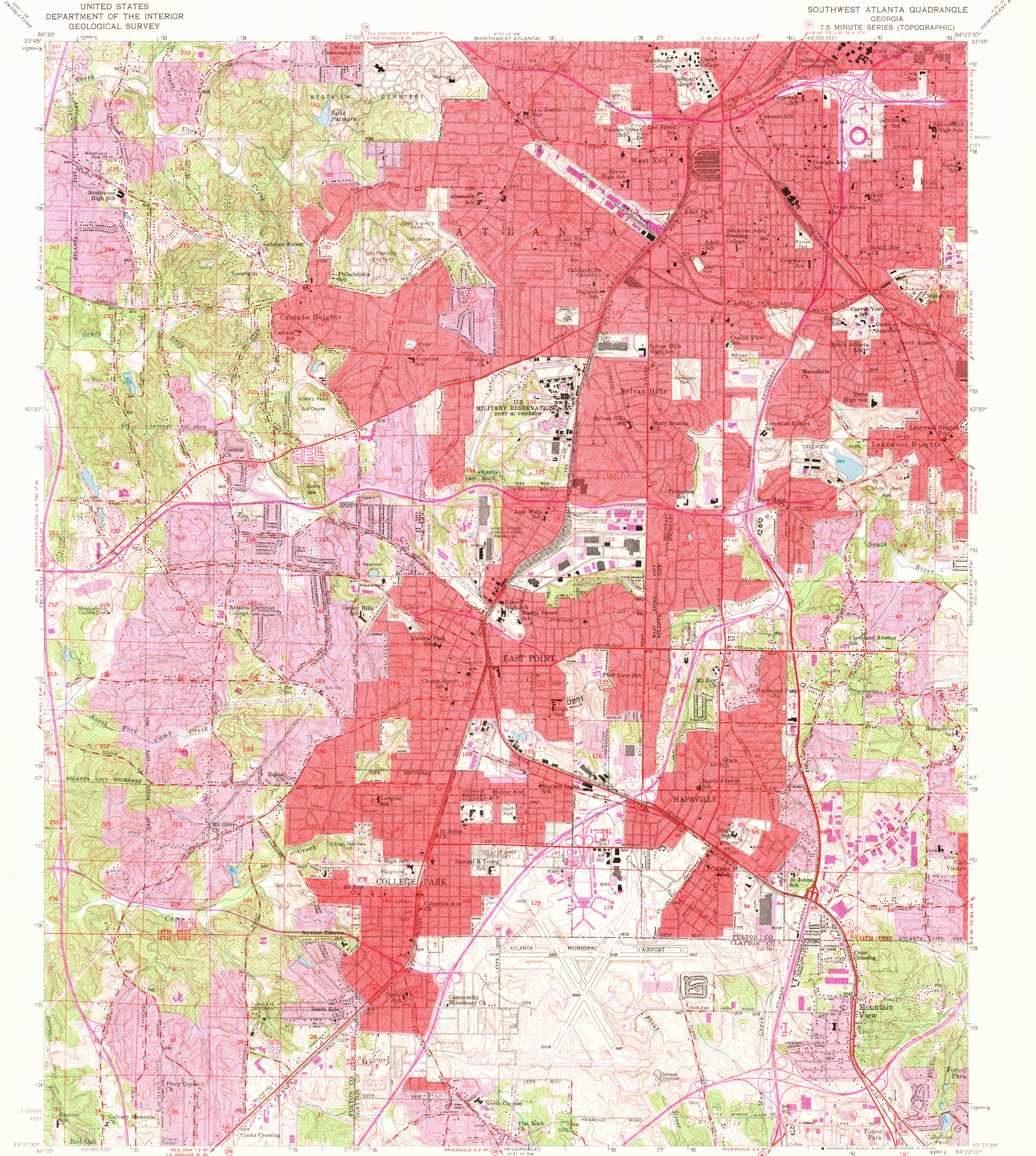
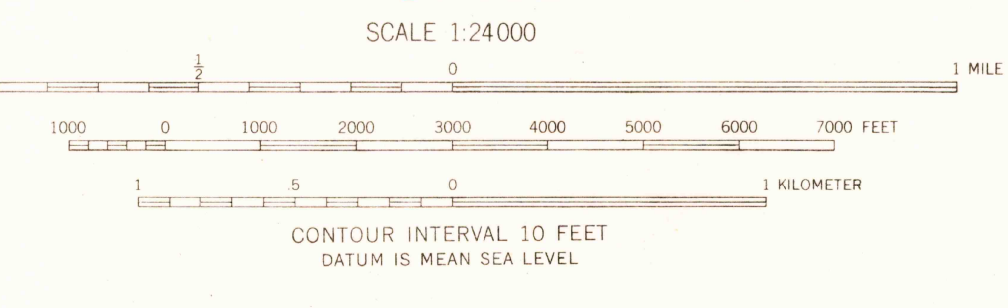
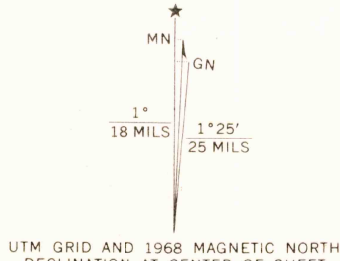


UNITED STATES  
DEPARTMENT OF THE INTERIOR  
GEOLOGICAL SURVEY

SOUTHWEST ATLANTA QUADRANGLE  
GEORGIA  
7.5 MINUTE SERIES (TOPOGRAPHIC)



Mapped, edited, and published by the Geological Survey  
Control by USGS, USC&GS, Georgia Geodetic Survey,  
and City of Atlanta  
Topography from aerial photographs by stereoplotter  
Aerial photographs taken 1952. Field check 1954  
Polyconic projection. 1927 North American datum  
10,000-foot grid based on Georgia coordinate system, west zone  
1000-meter Universal Transverse Mercator grid ticks,  
zone 16, shown in blue  
Red tint indicates areas in which only landmark buildings are shown  
Land lines from information supplied by  
Atlanta-Fulton County Joint Planning Board  
Revisions shown in purple compiled from aerial photographs  
taken 1968. This information not field checked  
Purple tint indicates extension of urban areas



USGS  
Historical File  
Topographic Division



U.S.G.S.  
FILE COPY  
TOPOGRAPHIC DIVISION

ROAD CLASSIFICATION  
Heavy-duty ——— Light-duty ———  
Medium-duty ——— Unimproved dirt ———  
Interstate Route ——— U.S. Route ——— State Route ———

SOUTHWEST ATLANTA, GA.  
(FORMERLY EAST POINT)  
N3337.5—W8422.5/7.5

1954  
PHOTOREVISED 1968  
AMS 4151 III NW—SERIES V845

50 50  
JAN 12 1970