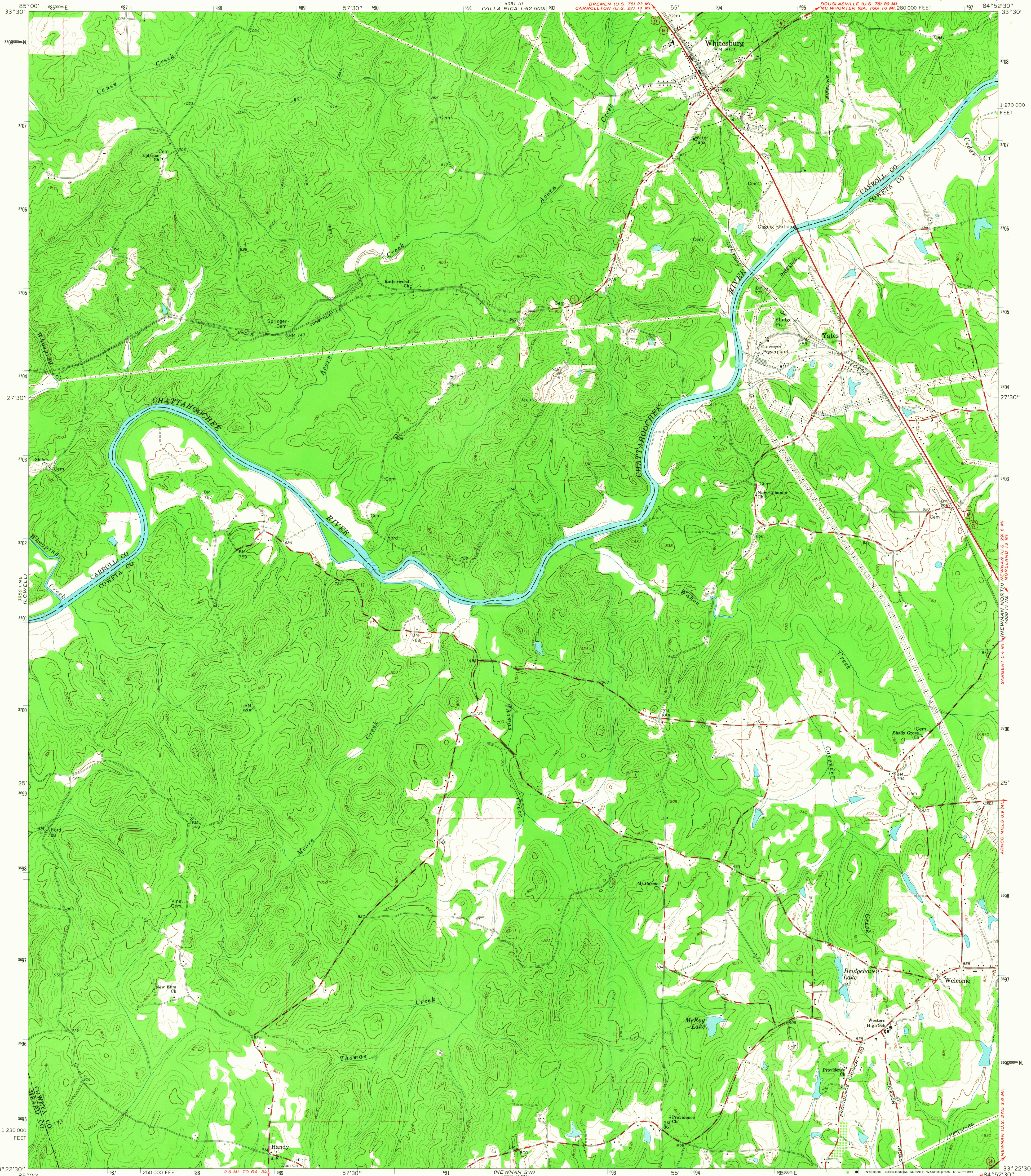


UNITED STATES
DEPARTMENT OF THE INTERIOR
GEOLOGICAL SURVEY

WHITESBURG QUADRANGLE
GEORGIA

7.5 MINUTE SERIES (TOPOGRAPHIC)



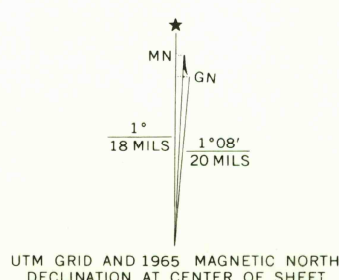
Mapped, edited, and published by the Geological Survey

Control by USGS, USC&GS, and USCE

Topography by photogrammetric methods from aerial photographs taken 1962. Field checked 1965

Polycyclic projection. 1927 North American datum
10,000-foot grid based on Georgia coordinate system, west zone
1000-meter Universal Transverse Mercator grid ticks, zone 16, shown in blue

Fine red dashed lines indicate selected fence and field lines where generally visible on aerial photographs. This information is unchecked



SCALE 1:24,000

CONTOUR INTERVAL 20 FEET

DATUM IS MEAN SEA LEVEL

UTM GRID AND 1965 MAGNETIC NORTH DECLINATION AT CENTER OF SHEET

USGS
Historical File
Topographic Division



U.S.G.S.
FILE COPY
TOPOGRAPHIC DIVISION

ROAD CLASSIFICATION
Heavy-duty ——— Light-duty ———
Medium-duty ——— Unimproved dirt ———
U.S. Route ——— State Route ———

WHITESBURG, GA.
N3322.5—W8452.5/7.5

1965

AMS 4050 IV NW—SERIES V845