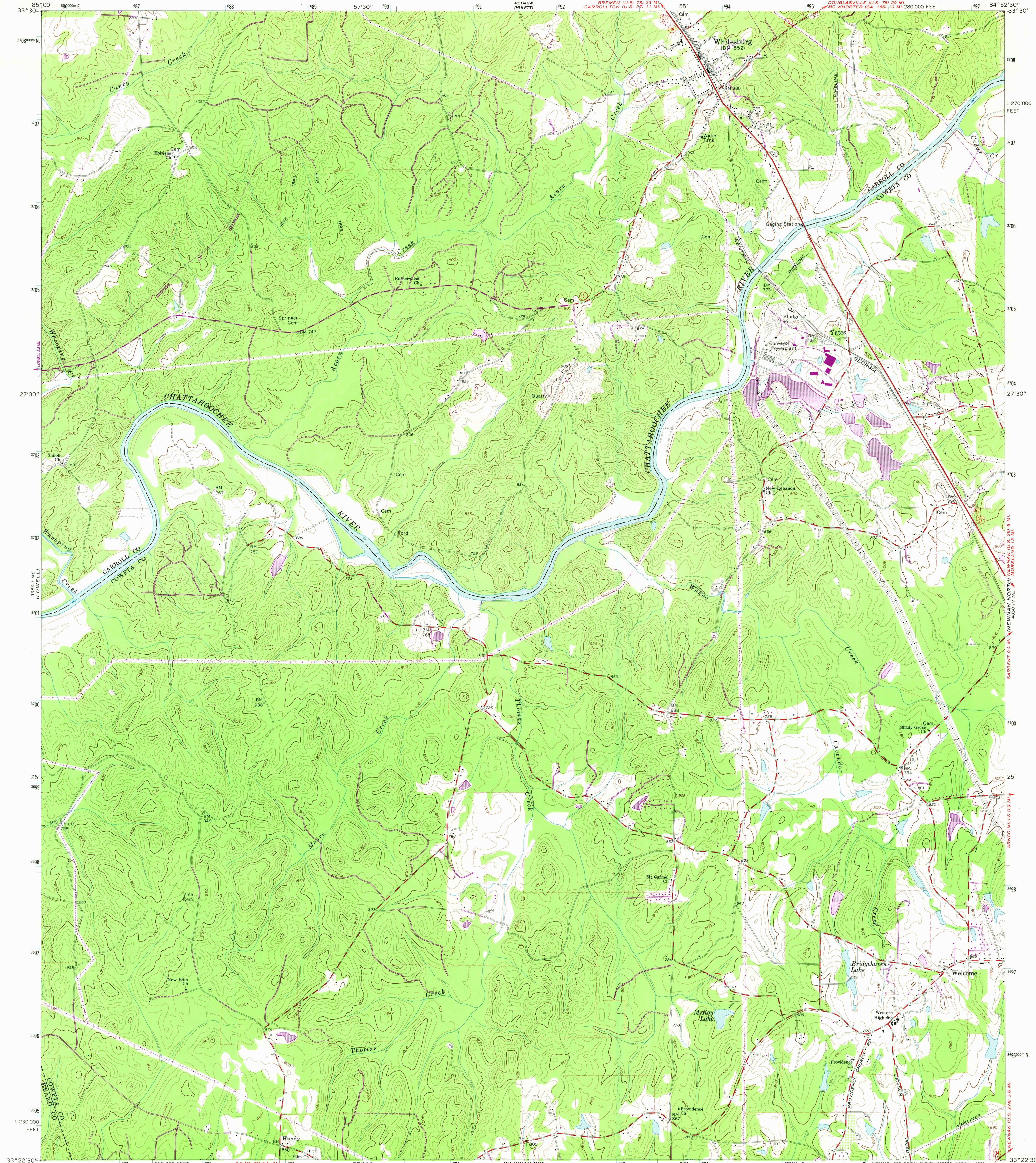
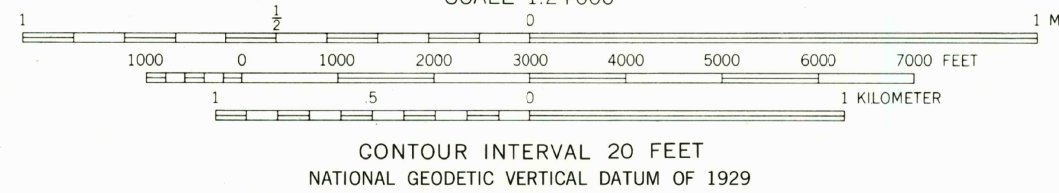
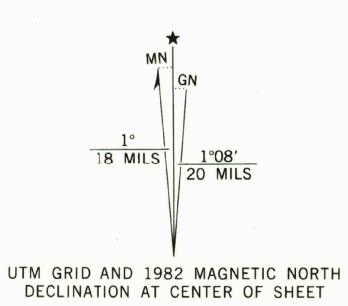


UNITED STATES
DEPARTMENT OF THE INTERIOR
GEOLOGICAL SURVEY

WHITESBURG QUADRANGLE
GEORGIA
7.5 MINUTE SERIES (TOPOGRAPHIC)



Mapped, edited, and published by the Geological Survey
Control by USGS, NOS/NOAA, and USCE
Topography by photogrammetric methods from aerial
photographs taken 1962. Field checked 1965
Polyconic projection. 10,000-foot grid ticks based on Georgia
coordinate system, west zone. 1000-meter Universal
Transverse Mercator grid ticks, zone 16, shown in blue
1927 North American Datum. To place on the predicted
North American Datum 1983 move the projection lines
11 meters south and 6 meters west as shown by dashed
corner ticks
Fine red dashed lines indicate selected fence and field lines where
generally visible on aerial photographs. This information is unchecked
Revisions shown in purple and woodland compiled from
aerial photographs taken 1981 and other sources
This information not field checked. Map edited 1982



THIS MAP COMPLIES WITH NATIONAL MAP ACCURACY STANDARDS
FOR SALE BY U.S. GEOLOGICAL SURVEY, RESTON, VIRGINIA 22092
A FOLDER DESCRIBING TOPOGRAPHIC MAPS AND SYMBOLS IS AVAILABLE ON REQUEST



ROAD CLASSIFICATION	
Heavy-duty	Light-duty
Medium-duty	Unimproved dirt
U.S. Route	State Route

WHITESBURG, GA.
N3322.5-W8452.5/7.5
1965
PHOTOREVISED 1982
DMA 4050 IV NW-SERIES V845

MAY 11 1982
U.S. GEOLOGICAL SURVEY