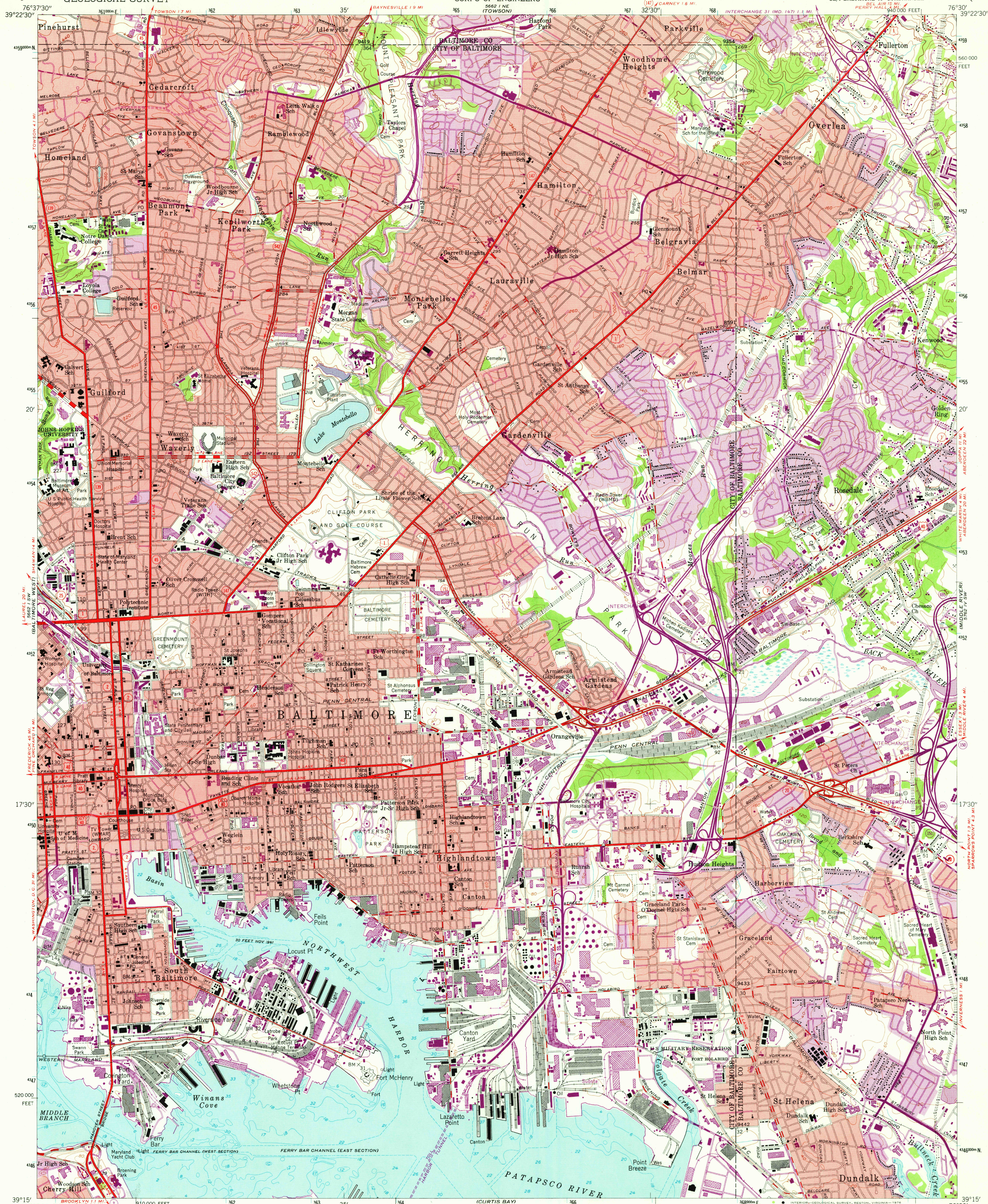


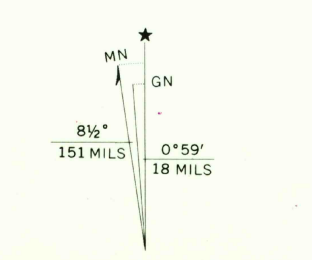
UNITED STATES
DEPARTMENT OF THE INTERIOR
GEOLOGICAL SURVEY

UNITED STATES
DEPARTMENT OF THE ARMY
CORPS OF ENGINEERS

BALTIMORE EAST QUADRANGLE
MARYLAND
7.5 MINUTE SERIES (TOPOGRAPHIC)
SE/4 BALTIMORE 15' QUADRANGLE



Map by the Army Map Service
Edited and published by the Geological Survey
Control by USGS, USC&GS, USCE, and City of Baltimore
Topography from aerial photographs by photogrammetric methods. Aerial photographs taken 1943. Field checked 1944
Culture revised by the Geological Survey 1953
Hydrography compiled from USC&GS Chart 545 (1951)
Polyconic projection. 1927 North American datum
10,000-foot grid based on Maryland coordinate system
1000-meter Universal Transverse Mercator grid ticks, zone 18, shown in blue
Red tint indicates areas in which only landmark buildings are shown
Revisions shown in purple compiled by Geological Survey from aerial photographs taken 1966 and 1974. This information not field checked
Purple tint indicates extension of urban areas



CONTOUR INTERVAL 20 FEET
NATIONAL GEODETIC VERTICAL DATUM OF 1929
DEPTH CURVES AND SOUNDINGS IN FEET—DATUM IS MEAN LOW WATER
SHORELINE SHOWN REPRESENTS THE APPROXIMATE LINE OF MEAN HIGH WATER
THE MEAN RANGE OF TIDE IS APPROXIMATELY 1.5 FEET
THIS MAP COMPLIES WITH NATIONAL MAP ACCURACY STANDARDS
FOR SALE BY U. S. GEOLOGICAL SURVEY, RESTON, VIRGINIA 22092
A FOLDER DESCRIBING TOPOGRAPHIC MAPS AND SYMBOLS IS AVAILABLE ON REQUEST



ROAD CLASSIFICATION
Heavy-duty ——— Light-duty ———
Medium-duty ——— Unimproved dirt ———
Interstate Route ——— U.S. Route ——— State Route ———

BALTIMORE EAST, MD.
SE/4 BALTIMORE 15' QUADRANGLE
N3915-W7630/7.5
1953
PHOTOREVISED 1966 AND 1974
AMS 5662 I SE—SERIES V833

USGS
Historical File
Topographic Division

JUL 1 2 1976