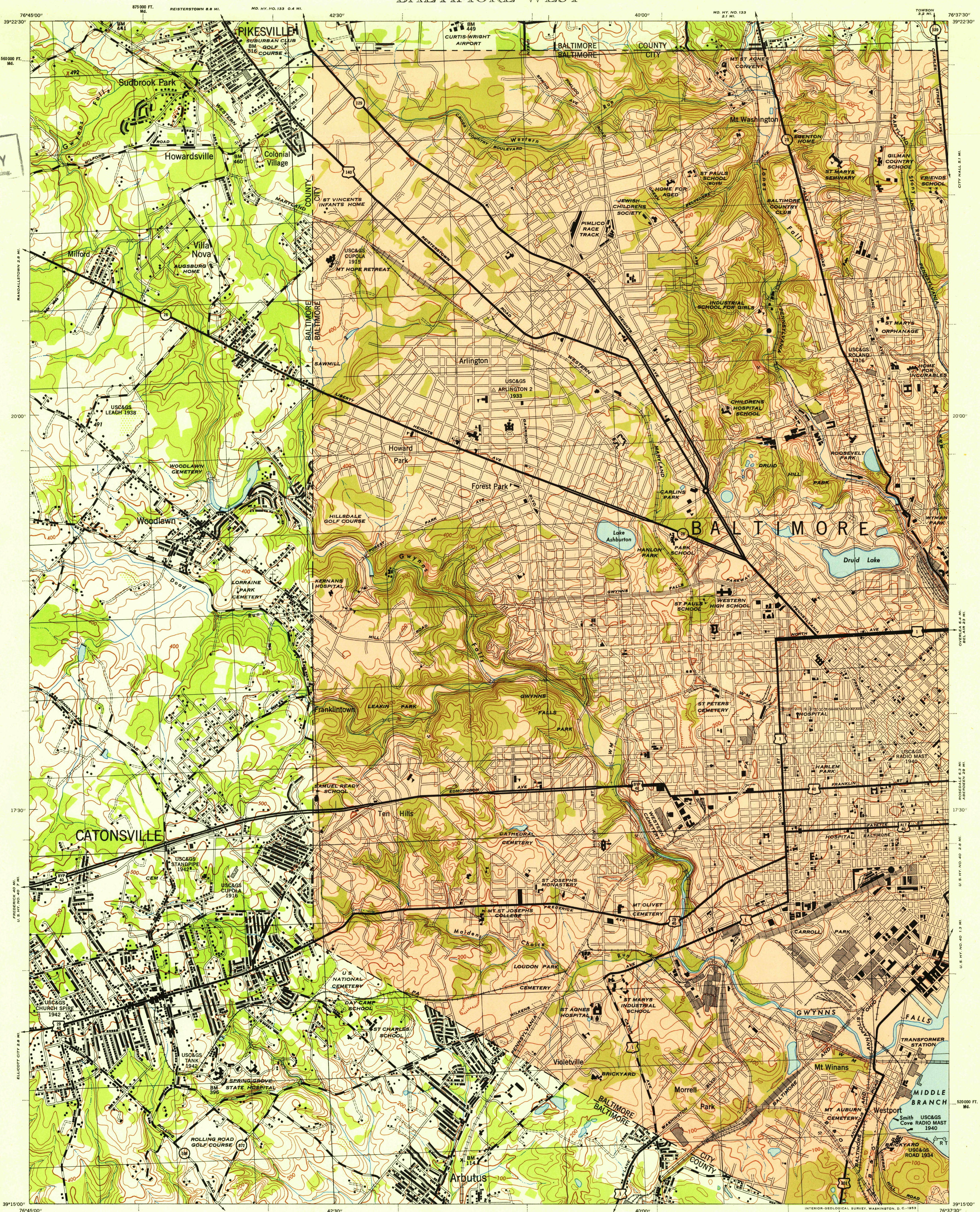
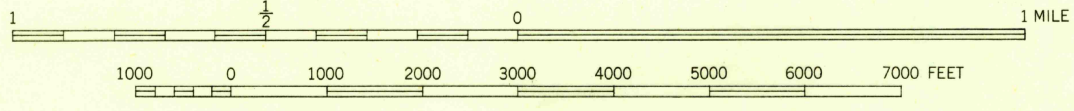


U.S.G.S.
FILE COPY
Imperfect and fading



SCALE 1:24,000



CONTOUR INTERVAL 20 FEET
DATUM IS MEAN SEA LEVEL

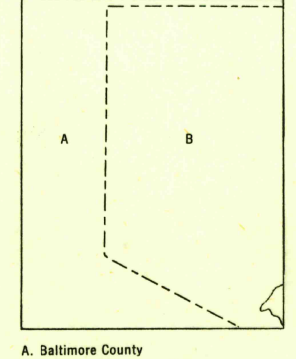
Polyconic projection, 1927 North American datum
REPRINTED FROM MILITARY EDITION FOR CIVIL USE

FOR SALE BY U. S. GEOLOGICAL SURVEY, WASHINGTON 25, D. C.

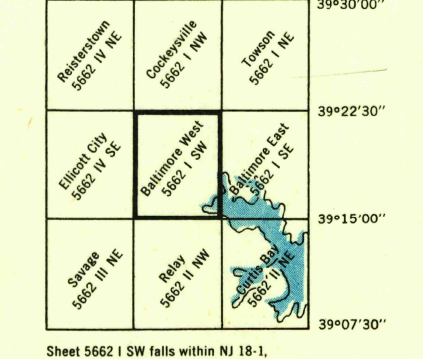
LEGEND

- Tint indicates built-up areas in which only landmark buildings are shown.
- ROAD DATA 1944
- Hard surface, heavy duty road, more than two lanes wide.
 - Hard surface, heavy duty road, two lanes wide; Federal route marker.
 - Secondary, hard surface, all-weather road, two lanes wide; State route marker.
 - Loose surface, graded, dry-weather road.
 - Trail; dirt road.
 - Railroad in street; Carline in street.
 - UNDER CONSTRUCTION
 - ABANDONED
 - RAILROADS
 - Standard gauge
 - Narrow gauge
 - Single track carline
 - BOUNDARIES
 - International
 - State
 - County (with monument)
 - County subdivision
 - Reservation
 - Military reservation
 - School; Church
 - Cemetery
 - Churchyard
 - Mine
 - Intermittent lake
 - Triangulation station
 - Intermittent stream
 - Dam
 - Rapids; Falls
 - Large rapids and falls
 - Swamp, marsh
 - Rocks awash at low tide
 - Wharf, pier
 - Man-made shoreline
 - Woods
 - Woods-brushwood
 - Brushwood
 - Orchard
 - Vineyard

INDEX TO BOUNDARIES



INDEX TO ADJOINING SHEETS



U.S.G.S.
FILE COPY
Imperfect and fading

BALTIMORE WEST, MARYLAND
N3915-W7637.5/7.5