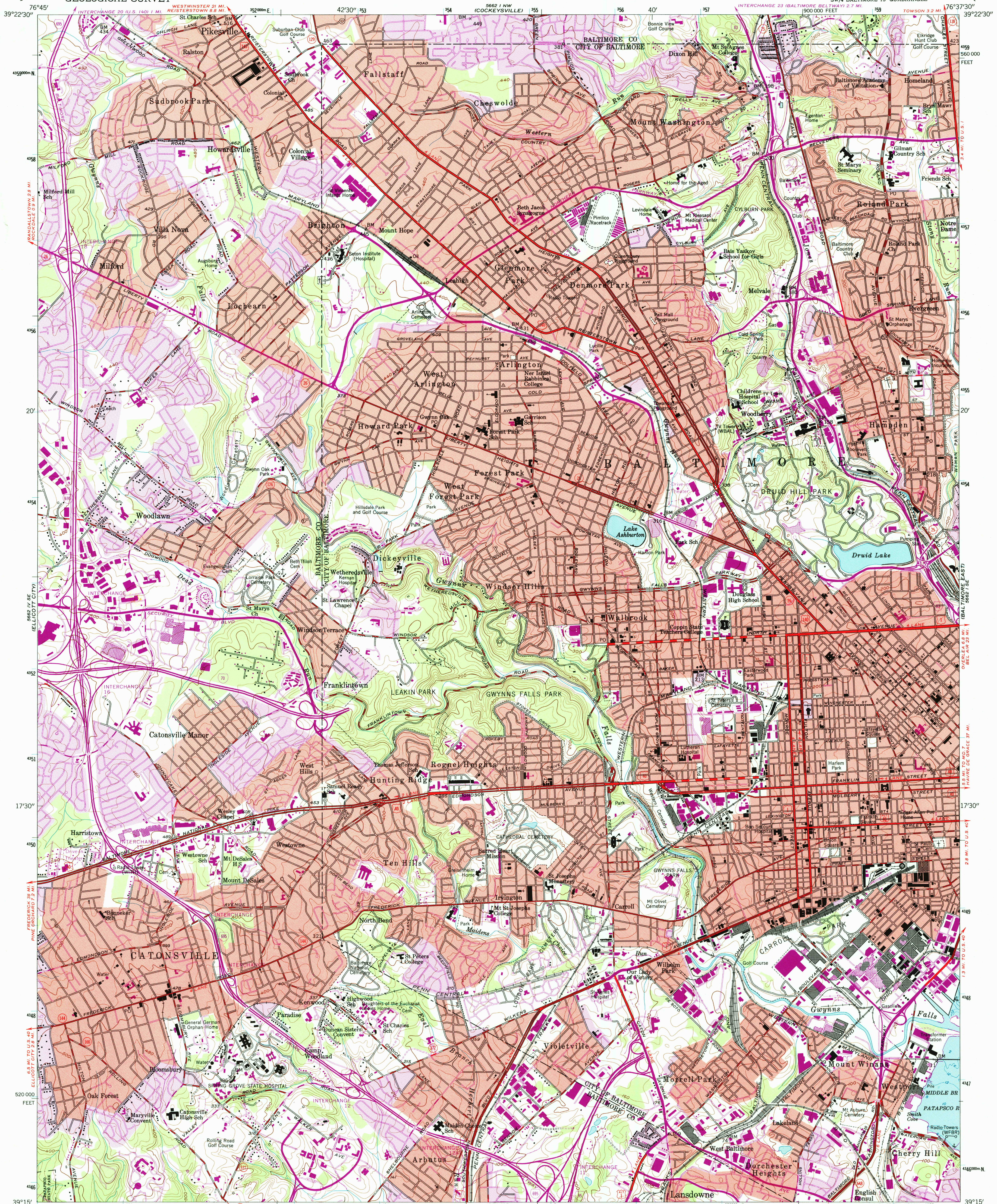
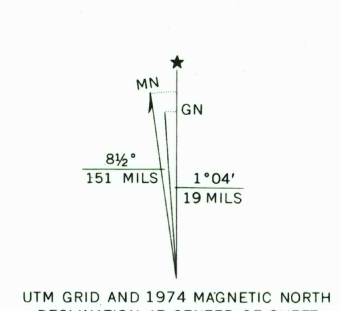


UNITED STATES  
DEPARTMENT OF THE INTERIOR  
GEOLOGICAL SURVEY

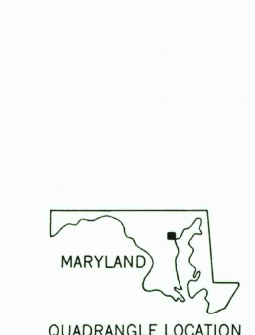
BALTIMORE WEST QUADRANGLE  
MARYLAND  
7.5 MINUTE SERIES (TOPOGRAPHIC)  
SW/4 BALTIMORE 15' QUADRANGLE



Maped by the Army Map Service  
Edited and published by the Geological Survey  
Control by USGS, USC&GS, USCE, and City of Baltimore  
Topography from aerial photographs by photogrammetric methods  
Aerial photographs taken 1943. Field checked 1944  
Culture revised by the Geological Survey 1953  
Hydrography from USC&GS Chart 545 (1942)  
Polyconic projection. 1927 North American datum  
10,000-foot grid based on Maryland coordinate system,  
1000-meter Universal Transverse Mercator grid ticks,  
zone 18, shown in blue  
Red tint indicates areas in which only landmark buildings are shown  
Unchecked elevations are shown in brown  
Revisions shown in purple compiled by the Geological Survey from  
aerial photographs taken 1966 and 1974. This information not field checked  
Purple tint indicates extension of urban areas



CONTOUR INTERVAL 20 FEET  
NATIONAL GEODETIC VERTICAL DATUM OF 1929  
DEPTH CURVES AND SOUNDINGS IN FEET—DATUM IS MEAN LOW WATER  
SHORELINE SHOWN REPRESENTS THE APPROXIMATE LINE OF MEAN HIGH WATER  
THE MEAN RANGE OF TIDE IS APPROXIMATELY 1.1 FEET  
THIS MAP COMPLIES WITH NATIONAL MAP ACCURACY STANDARDS  
FOR SALE BY U.S. GEOLOGICAL SURVEY  
DENVER, COLORADO 80225, OR RESTON, VIRGINIA 22092  
A FOLDER DESCRIBING TOPOGRAPHIC MAPS AND SYMBOLS IS AVAILABLE ON REQUEST



ROAD CLASSIFICATION  
Heavy-duty ——— Light-duty ———  
Medium-duty ——— Unimproved dirt ———  
Interstate Route U.S. Route State Route  
BALTIMORE WEST, MD.  
SW/4 BALTIMORE 15' QUADRANGLE  
N3915-W7637.5/7.5  
1953  
PHOTOREVISED 1966 AND 1974  
AMS 5662 1 SW—SERIES V833

