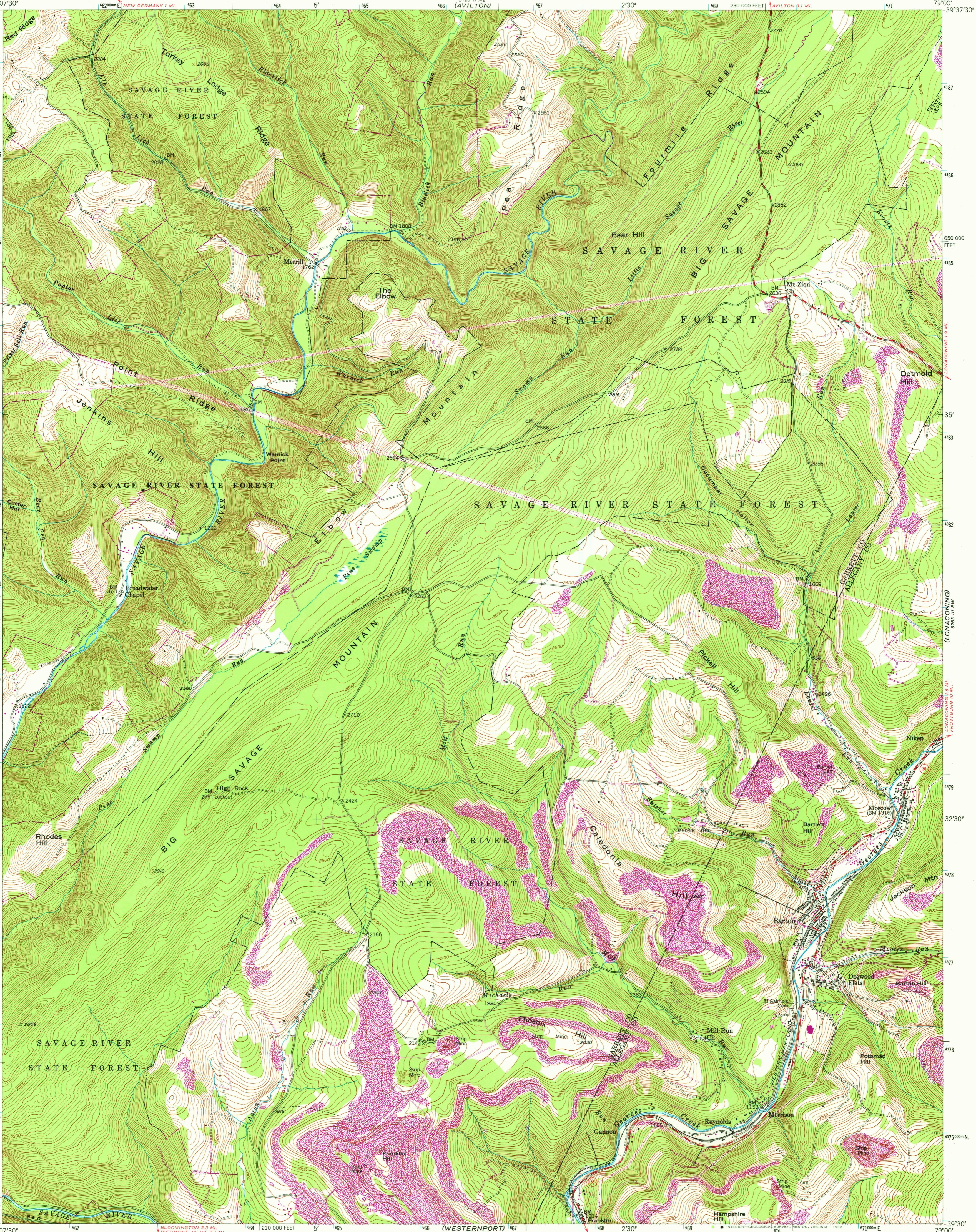


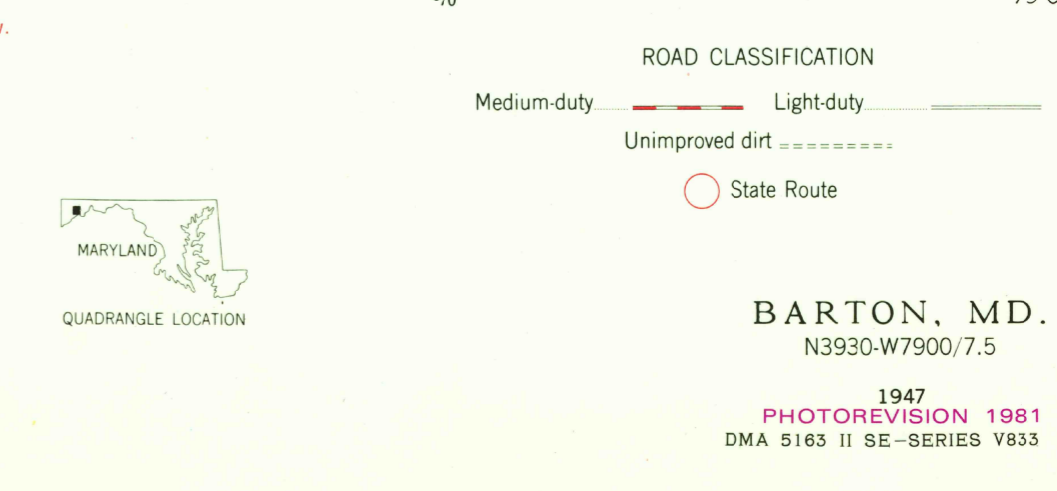
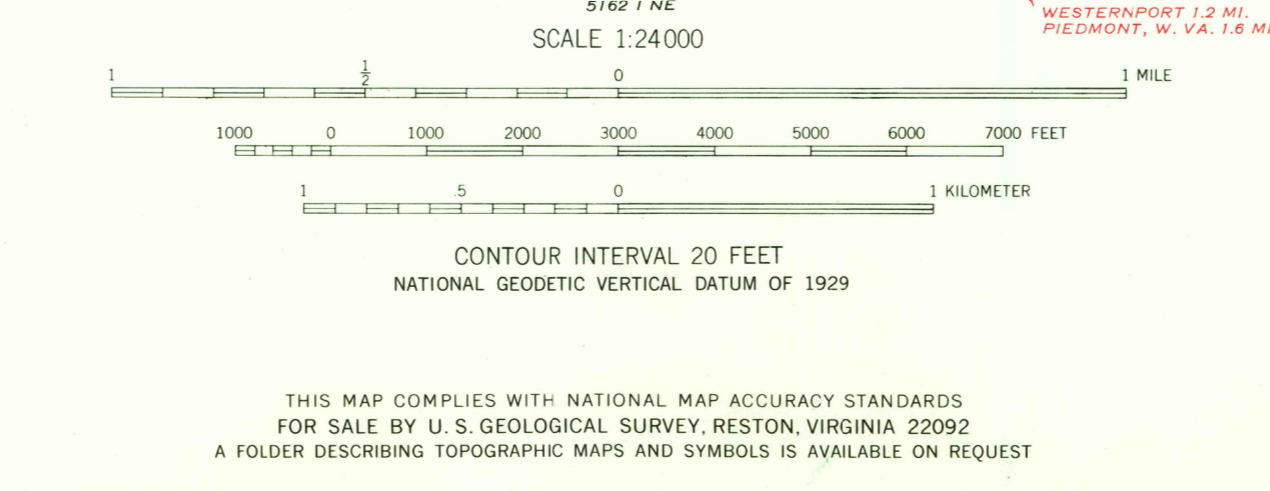
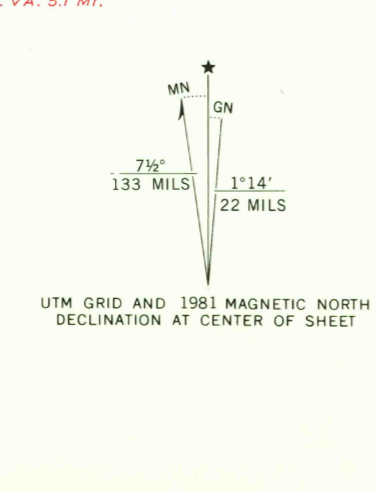
UNITED STATES
DEPARTMENT OF THE INTERIOR
GEOLOGICAL SURVEY

STATE OF MARYLAND
MARYLAND GEOLOGICAL SURVEY

BARTON QUADRANGLE
MARYLAND
7.5 MINUTE SERIES (TOPOGRAPHIC)



Mapped, edited, and published by the Geological Survey
Control by USGS
Topography by photogrammetric methods from aerial photographs taken 1946. Field checked 1947
Polyconic projection. 10,000-foot grid ticks based on Maryland coordinate system. 1000-meter Universal Transverse Mercator grid ticks, zone 17, shown in blue 1927 North American Datum. To place on the predicted North American Datum 1983 move the projection lines 6 meters south and 21 meters west as shown by dashed corner ticks
There may be private inholdings within the boundaries of the National or State reservations shown on this map
Revisions shown in purple and woodland compiled from aerial photographs taken 1979 and other sources
This information not field checked. Map edited 1981



SEP 16 1982
3700
1947
PHOTOREVISION 1981
DMA 5163 II SE-SERIES V833