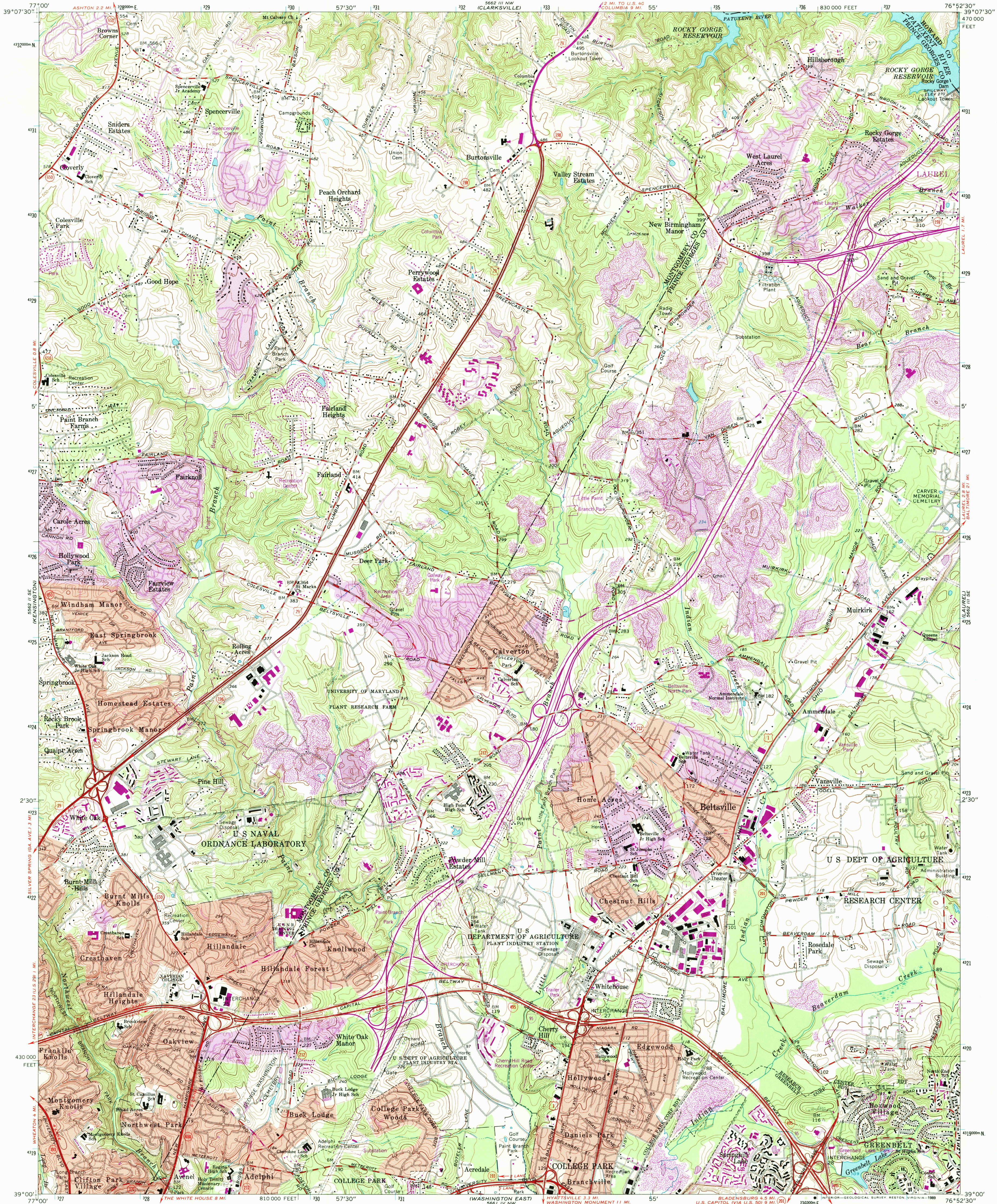


UNITED STATES  
DEPARTMENT OF THE INTERIOR  
GEOLOGICAL SURVEY

BELTSVILLE QUADRANGLE  
MARYLAND  
7.5 MINUTE SERIES (TOPOGRAPHIC)  
SW/4 LAUREL 15' QUADRANGLE



Mapped, edited, and published by the Geological Survey  
Control by USGS, USC&GS, USSCS, and WSSC

Topography by photogrammetric methods from aerial photographs  
taken 1955. Field checked 1956. Revised 1964  
Polyconic projection. 1927 North American datum  
10,000-foot grid based on Maryland coordinate system  
1000-meter Universal Transverse Mercator grid ticks, zone 18,  
shown in blue

Fine red dashed lines indicate selected fence and field lines where  
generally visible on aerial photographs. This information is unchecked  
Red tint indicates areas in which only landmark buildings are shown  
There may be private inholdings within the boundaries of the  
National or State reservations shown on this map

Revisions shown in purple compiled from aerial  
photographs taken 1977 and other source data  
This information not field checked. Map edited 1979

UTM GRID AND 1979 MAGNETIC NORTH  
DECLINATION AT CENTER OF SHEET  
To place on the predicted North American Datum 1983,  
move the projection lines 8 meters south and  
26 meters west as shown by dashed corner ticks

THIS MAP COMPLIES WITH NATIONAL MAP ACCURACY STANDARDS  
FOR SALE BY U.S. GEOLOGICAL SURVEY  
DENVER, COLORADO 80225, OR RESTON, VIRGINIA 22092  
A FOLDER DESCRIBING TOPOGRAPHIC MAPS AND SYMBOLS IS AVAILABLE ON REQUEST

Boundary lines shown in purple compiled from latest  
information available from the controlling authority  
Purple tint indicates extension of urban areas

ROAD CLASSIFICATION

- Heavy-duty ——— Light-duty ———
- Medium-duty ——— Unimproved dirt ———
- Interstate Route U.S. Route State Route

BELTSVILLE, MD.  
SW/4 LAUREL 15' QUADRANGLE  
39076-A8-7F-024

1964  
PHOTOREVISED 1979  
DMA 5662 III SW-SERIES V833