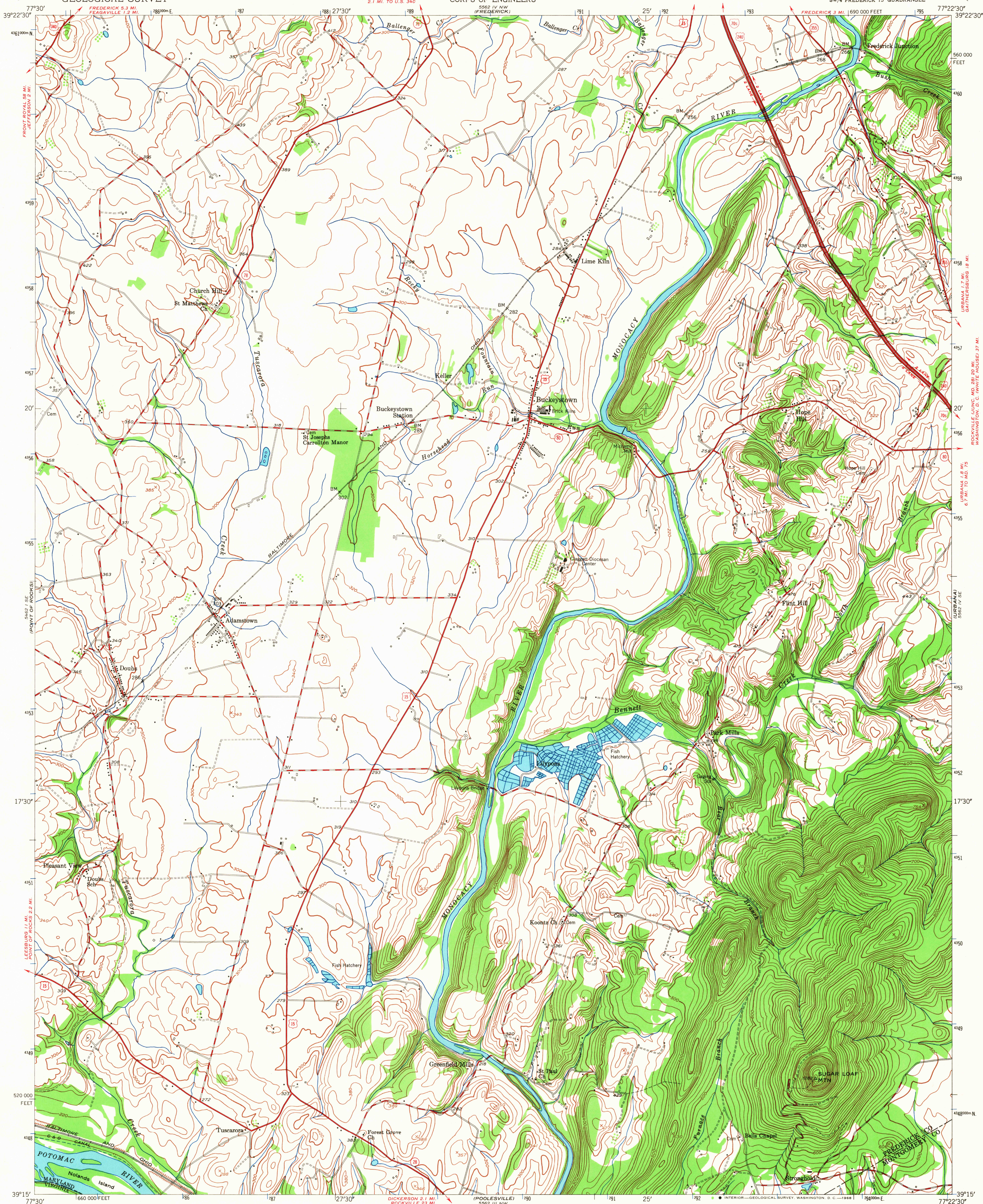


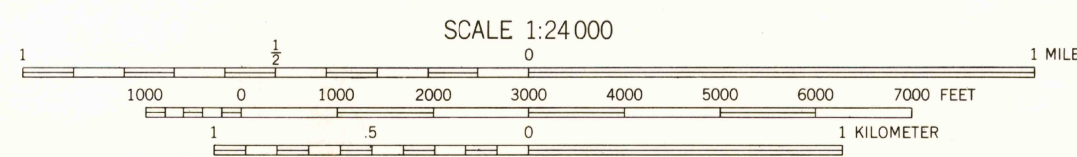
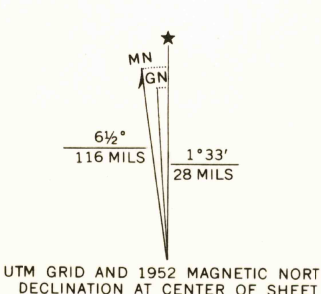
UNITED STATES
DEPARTMENT OF THE INTERIOR
GEOLOGICAL SURVEY

UNITED STATES
DEPARTMENT OF THE ARMY
CORPS OF ENGINEERS

BUCKEYSTOWN QUADRANGLE
MARYLAND-VIRGINIA
7.5 MINUTE SERIES (TOPOGRAPHIC)
SW/4 FREDERICK 15' QUADRANGLE



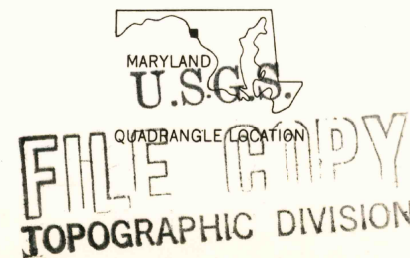
Mapped by Corps of Engineers, U.S. Army
Edited and published by the Geological Survey
Control by USGS, USC&GS, and Maryland Geodetic Survey
Topography from aerial photographs by KEK plotter
Aerial photographs taken 1943
Revised by the Geological Survey 1952
Polyconic projection. 1927 North American datum
10,000-foot grid based on Maryland coordinate system
1000-meter Universal Transverse Mercator grid ticks,
zone 18, shown in blue



CONTOUR INTERVAL 20 FEET
DATUM IS MEAN SEA LEVEL

THIS MAP COMPLIES WITH NATIONAL MAP ACCURACY STANDARDS
FOR SALE BY U.S. GEOLOGICAL SURVEY, WASHINGTON, D. C. 20242
A FOLDER DESCRIBING TOPOGRAPHIC MAPS AND SYMBOLS IS AVAILABLE ON REQUEST

USGS
Historical File
Topographic Division



ROAD CLASSIFICATION
Heavy-duty ——— Light-duty ———
Medium-duty ——— Unimproved dirt ———
Interstate Route U.S. Route State Route

BUCKEYSTOWN, MD.-VA.
SW/4 FREDERICK 15' QUADRANGLE
N3915-W7722.5/7.5

1952
AMS 5562 IV SW-SERIES V833

6250
JUN 7 1966