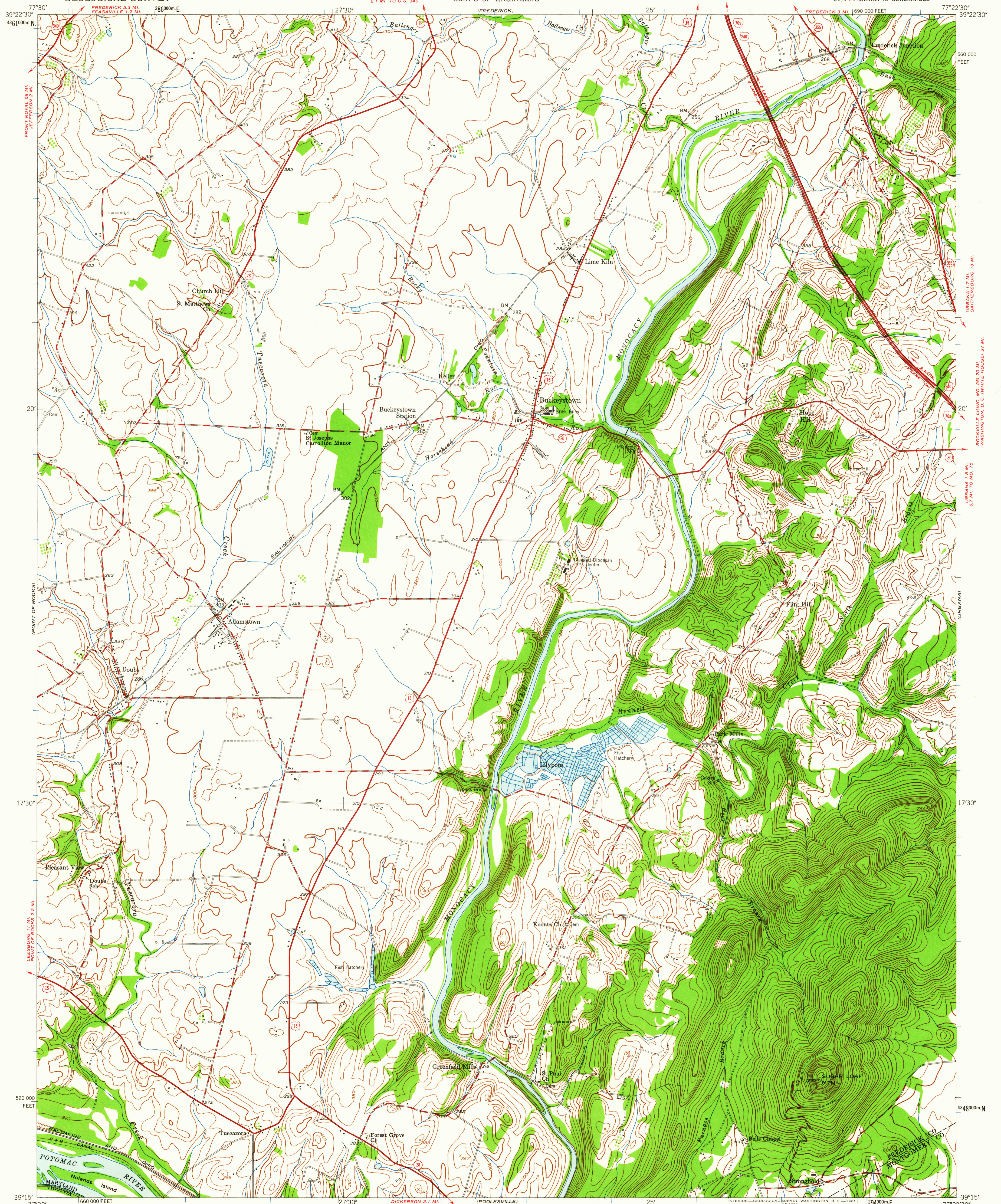


UNITED STATES
DEPARTMENT OF THE INTERIOR
GEOLOGICAL SURVEY

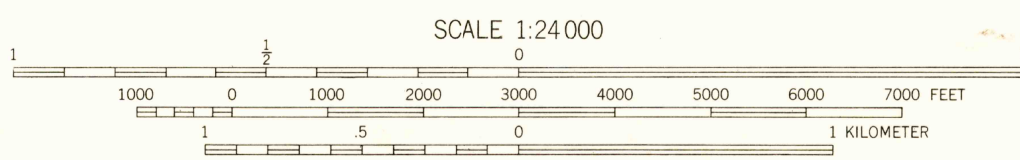
UNITED STATES
DEPARTMENT OF THE ARMY
CORPS OF ENGINEERS

BUCKEYSTOWN QUADRANGLE
MARYLAND-VIRGINIA
7.5 MINUTE SERIES (TOPOGRAPHIC)
SW/4 FREDERICK 15' QUADRANGLE



Mapped by Corps of Engineers, U.S. Army
Edited and published by the Geological Survey
Control by USGS, USC&GS, and Maryland Geodetic Survey
Topography from aerial photographs by KEK plotter
Aerial photographs taken 1943
Revised by the Geological Survey 1952
Polyconic projection, 1927 North American datum
10,000-foot grid based on Maryland coordinate system
1000-meter Universal Transverse Mercator grid ticks,
zone 18, shown in blue

TRUE NORTH
MAGNETIC NORTH
APPROXIMATE MEAN
DECLINATION, 1952



CONTOUR INTERVAL 20 FEET
DATUM IS MEAN SEA LEVEL

THIS MAP COMPLIES WITH NATIONAL MAP ACCURACY STANDARDS
FOR SALE BY U.S. GEOLOGICAL SURVEY, WASHINGTON 25, D.C.
A FOLDER DESCRIBING TOPOGRAPHIC MAPS AND SYMBOLS IS AVAILABLE ON REQUEST



ROAD CLASSIFICATION
Heavy-duty ——— Light-duty ———
Medium-duty ——— Unimproved dirt ———
Interstate Route U.S. Route State Route

USGS
Historical File
Topographic Division

BUCKEYSTOWN, MD.-VA.
SW/4 FREDERICK 15' QUADRANGLE
N3915-W7722.5/7.5

1952

FEB - 6 1952

3225