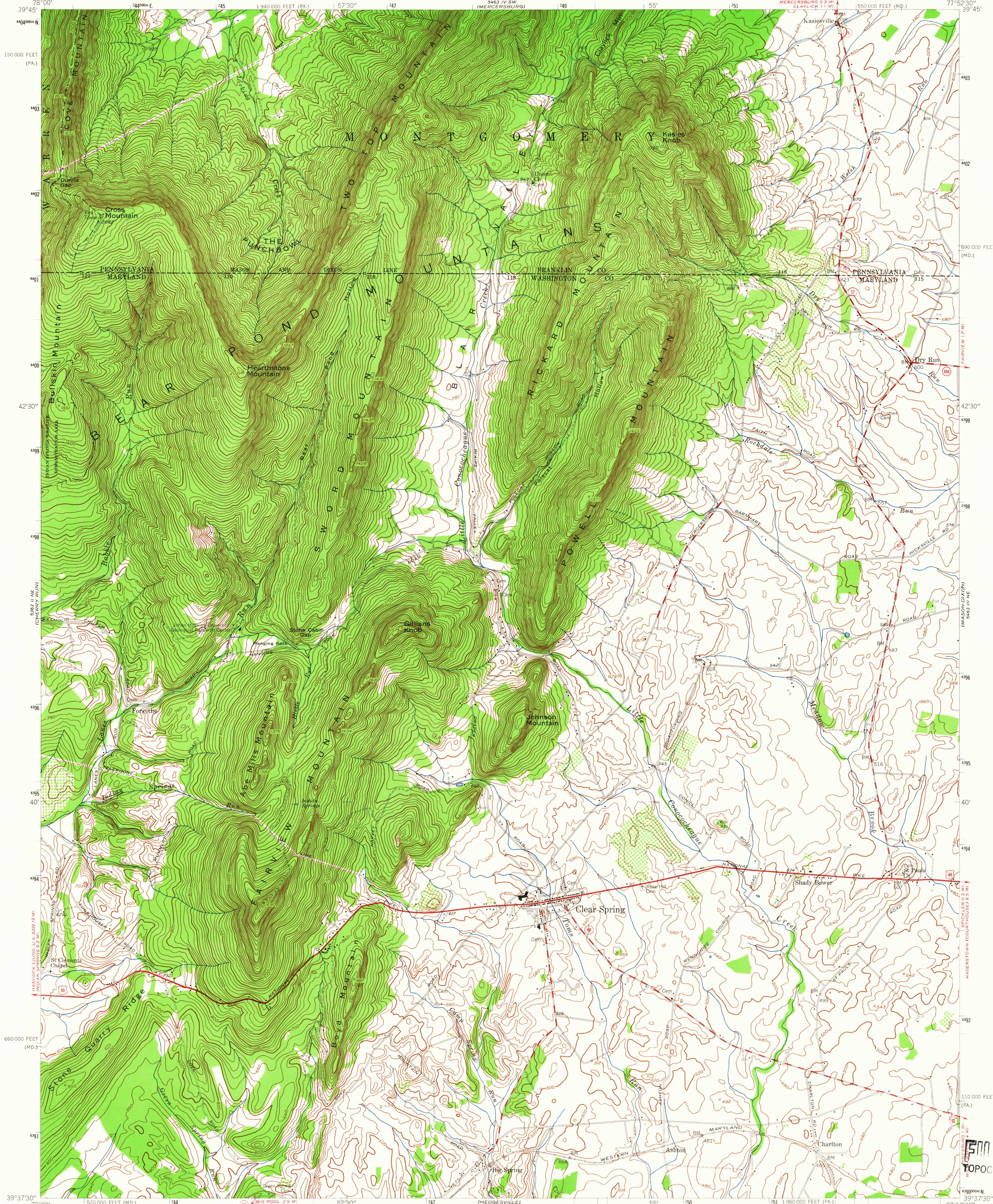


UNITED STATES
DEPARTMENT OF THE INTERIOR
GEOLOGICAL SURVEY

UNITED STATES
DEPARTMENT OF THE ARMY
CORPS OF ENGINEERS

CLEAR SPRING QUADRANGLE
MARYLAND—PENNSYLVANIA
7.5 MINUTE SERIES (TOPOGRAPHIC)
NW/4 WILLIAMSPORT 15' QUADRANGLE



Mapped by the Army Map Service
Edited and published by the Geological Survey

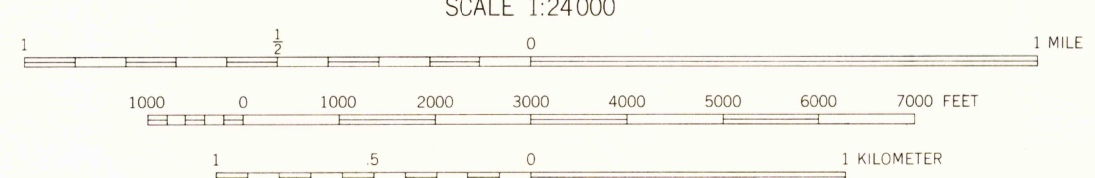
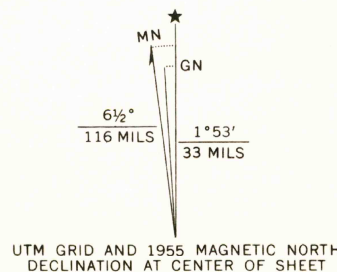
Control by USGS and USC&GS

Topography from aerial photographs by photogrammetric methods
Aerial photographs taken 1943. Field check 1944
Culture revised by the Geological Survey 1955

Polyconic projection. 1927 North American datum
10,000-foot grids based on Maryland coordinate system,
and Pennsylvania coordinate system, south zone

Unchecked elevations are shown in brown

1000-meter Universal Transverse Mercator grid ticks,
zone 18, shown in blue



USGS
Historical File
Topographic Division



ROAD CLASSIFICATION
Heavy-duty ——— Light-duty ———
Med-um-duty ——— Unimproved dirt ———
U. S. Route ——— State Route ———

CLEAR SPRING, MD.—PA.
NW/4 WILLIAMSPORT 15' QUADRANGLE
N 3937.5—W 7752.5/7.5

1955

AMS 5463 III NW—SERIES V833

U.S.G.S.
COPY
TOPOGRAPHIC DIVISION

3190
JUN 21 1955