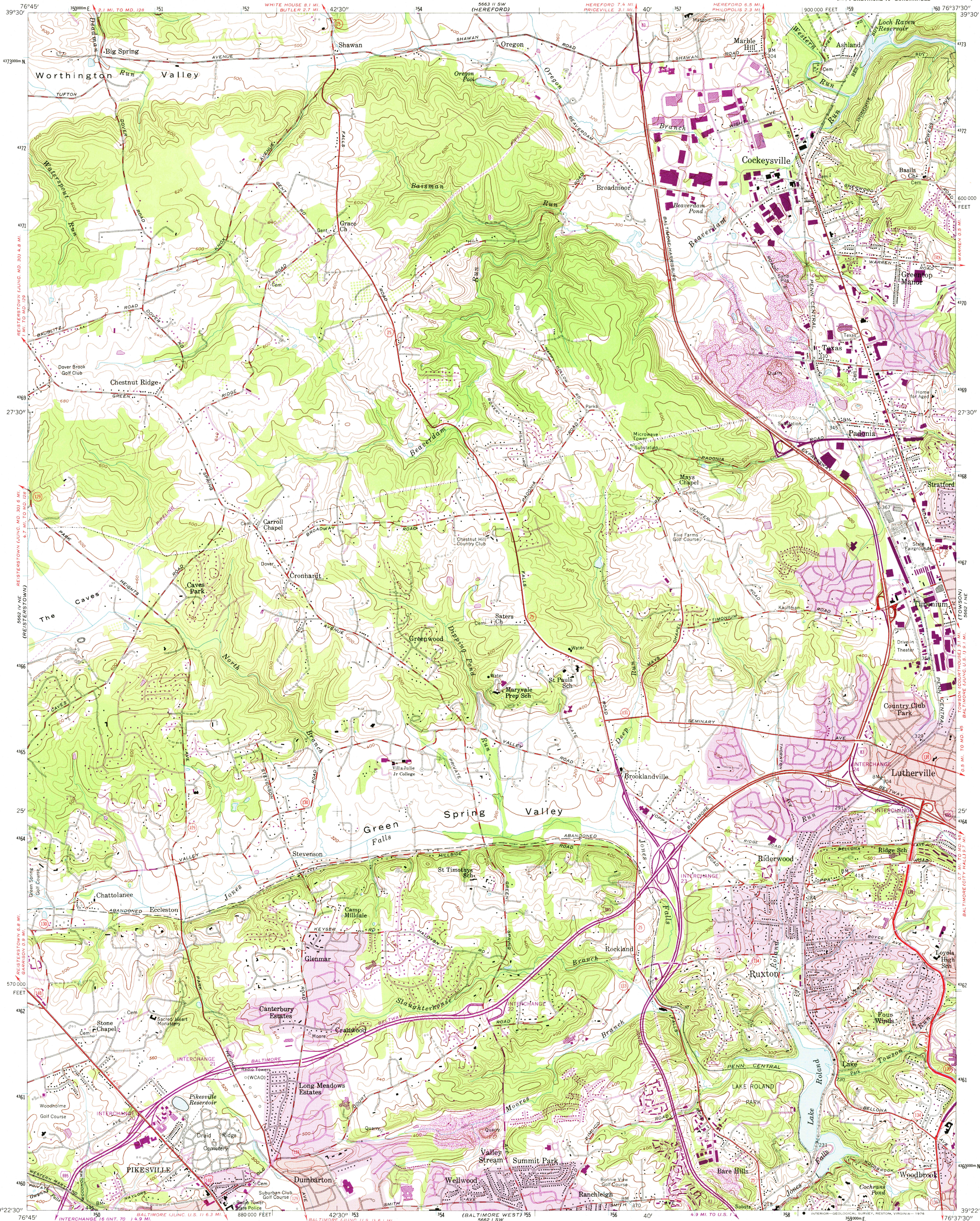


UNITED STATES
DEPARTMENT OF THE INTERIOR
GEOLOGICAL SURVEY

COCKEYSVILLE QUADRANGLE
MARYLAND—BALTIMORE CO.
7.5 MINUTE SERIES (TOPOGRAPHIC)
NW 1/4 BALTIMORE 15' QUADRANGLE

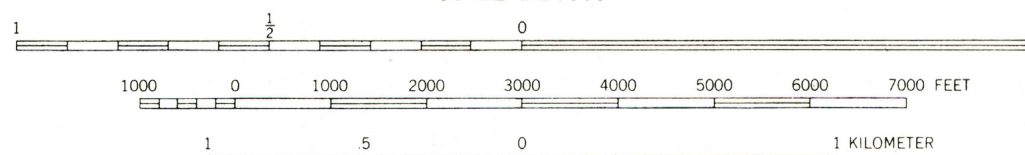
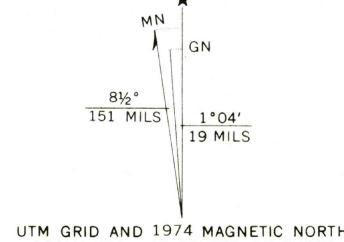


Map by the Army Map Service
Edited and published by the Geological Survey

Control by USGS and USC&GS
Topography from aerial photographs by photogrammetric methods. Aerial photographs taken 1943. Field check 1944
Culture revised by the Geological Survey 1957

Polyconic projection. 1927 North American datum
10,000-foot grid based on Maryland coordinate system
1000-meter Universal Transverse Mercator grid ticks,
zone 18, shown in blue

Red tint indicates areas in which only
landmark buildings are shown



CONTOUR INTERVAL 20 FEET
NATIONAL GEODETIC VERTICAL DATUM OF 1929

THIS MAP COMPLIES WITH NATIONAL MAP ACCURACY STANDARDS
FOR SALE BY U.S. GEOLOGICAL SURVEY, RESTON, VIRGINIA 22092
A FOLDER DESCRIBING TOPOGRAPHIC MAPS AND SYMBOLS IS AVAILABLE ON REQUEST



ROAD CLASSIFICATION
Heavy-duty ——— Light-duty ———
Medium-duty ——— Unimproved dirt ———
Interstate Route U.S. Route State Route

USGS
HISTORICAL FILE
TOPOGRAPHIC DIVISION

COCKEYSVILLE, MD.
NW 1/4 BALTIMORE 15' QUADRANGLE
N 3922.5—W 7637.5/7.5
1957

PHOTOREVISED 1966 AND 1974
AMS 5662 1 NW—SERIES V833

Revisions shown in purple compiled by the Geological
Survey from aerial photographs taken 1966 and 1974.
This information not field checked.
Purple tint indicates extension of urban areas.

JAN 29 1976