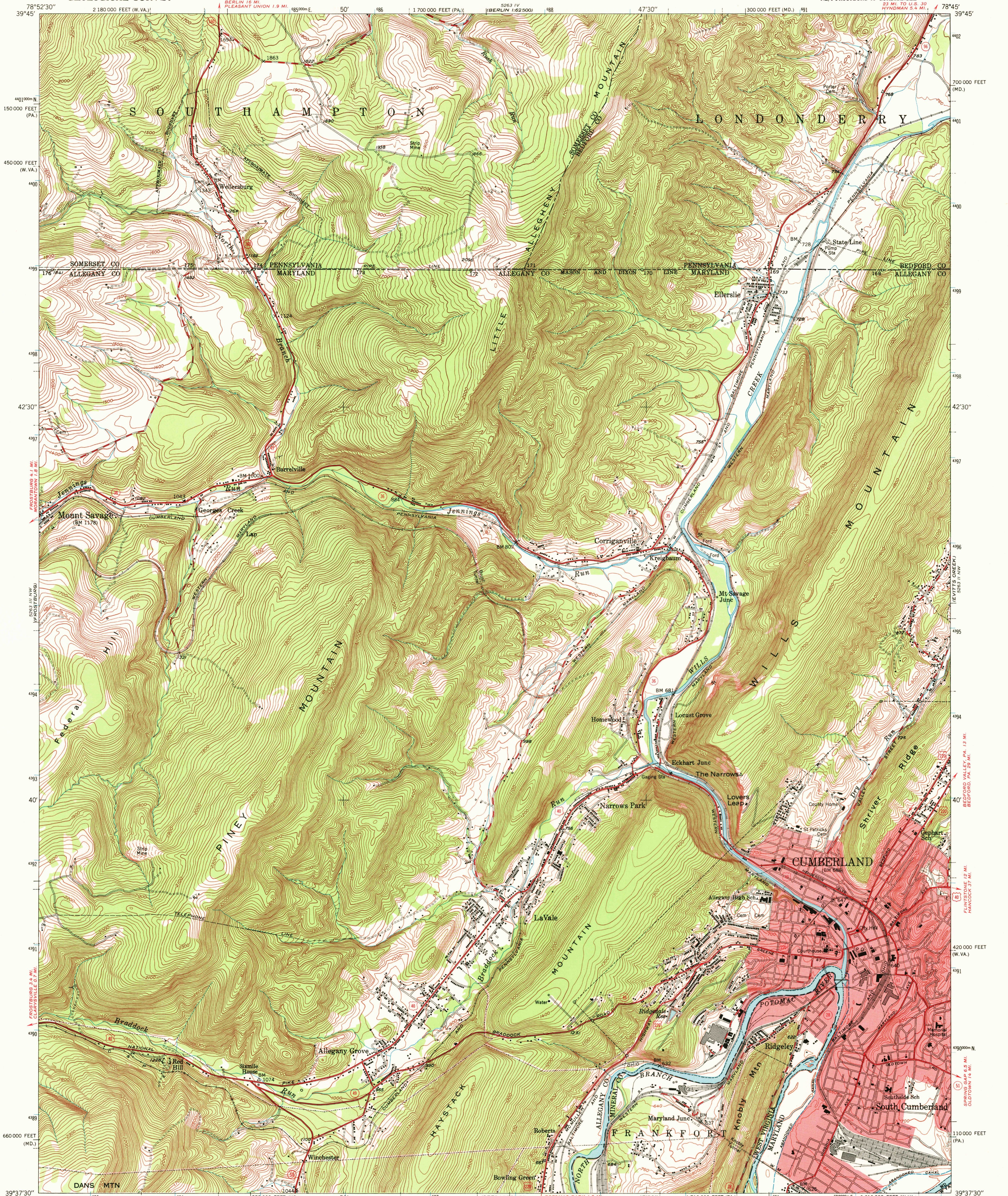
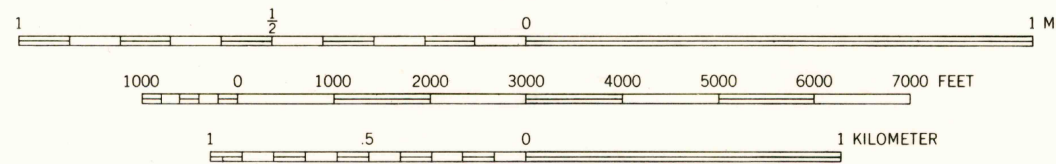
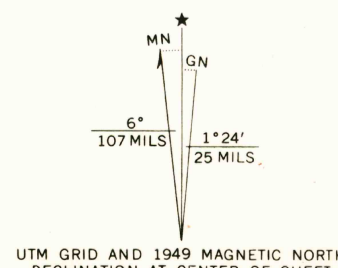


UNITED STATES
DEPARTMENT OF THE INTERIOR
GEOLOGICAL SURVEY

CUMBERLAND QUADRANGLE
MARYLAND-PENNSYLVANIA-WEST VIRGINIA
7.5 MINUTE SERIES (TOPOGRAPHIC)
NE/4 FROSTBURG 15' QUADRANGLE
23 MI. TO U.S. 30
HYNDMAN 5.4 MI.
5263 III SW
(PENNSYLVANIA 102240)

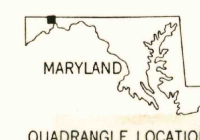


Mapped, edited, and published by the Geological Survey
Control by USGS and USC&GS
Topography from aerial photographs by multiplex methods
Aerial photographs taken 1947. Field check 1949
Polyconic projection. 1927 North American datum
10,000-foot grids based on Maryland coordinate system,
Pennsylvania coordinate system, south zone, and
West Virginia coordinate system, north zone
Red tint indicates area in which only
landmark buildings are shown
Contours in strip mine areas compiled from 1947 photography
Broken contours indicate strip mining
subsequent to photography
1000-meter Universal Transverse Mercator grid ticks,
zone 17, shown in blue



CONTOUR INTERVAL 20 FEET
DATUM IS MEAN SEA LEVEL

THIS MAP COMPLIES WITH NATIONAL MAP ACCURACY STANDARDS
FOR SALE BY U.S. GEOLOGICAL SURVEY, WASHINGTON, D.C. 20242
A FOLDER DESCRIBING TOPOGRAPHIC MAPS AND SYMBOLS IS AVAILABLE ON REQUEST
THIS MAP IS AVAILABLE WITH OR WITHOUT SHADED RELIEF OVERPRINT



ROAD CLASSIFICATION
Heavy-duty ——— Light-duty ———
Medium-duty ——— Unimproved dirt ———
U.S. Route ——— State Route ———

CUMBERLAND, MD-PA-W.V.A.
NE/4 FROSTBURG 15' QUADRANGLE
N3937.5-W7845/7.5
1949
AMS 5263 III NE-SERIES V833

DEC 16 1971