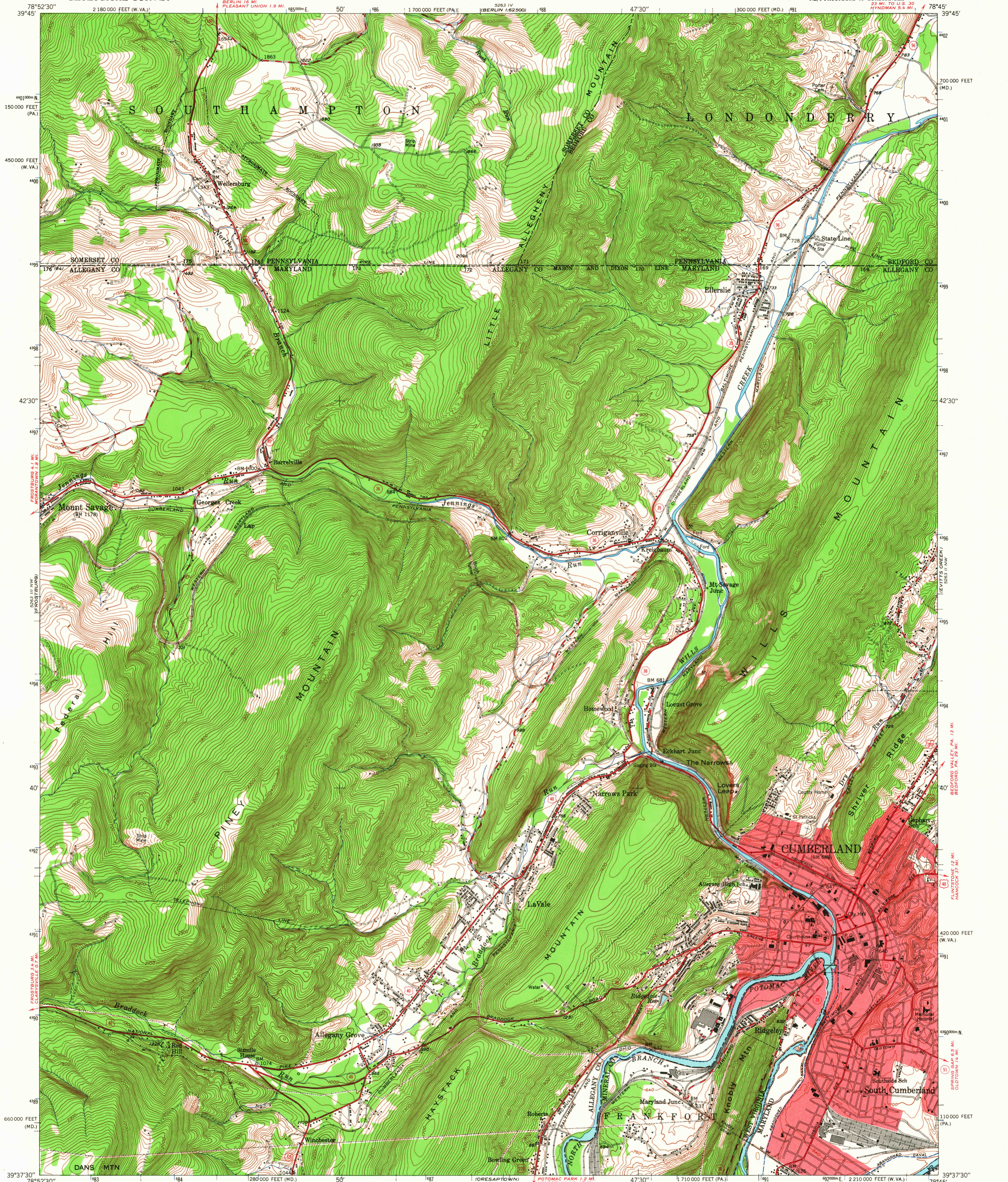


UNITED STATES  
DEPARTMENT OF THE INTERIOR  
GEOLOGICAL SURVEY

CUMBERLAND QUADRANGLE  
MARYLAND-PENNSYLVANIA-WEST VIRGINIA  
7.5 MINUTE SERIES (TOPOGRAPHIC)  
NE/4 FROSTBURG 15' QUADRANGLE  
21 MI. TO U.S. 30  
HYNDMAN 5.5 MI.



Mapped, edited, and published by the Geological Survey

Control by USGS and USC&GS

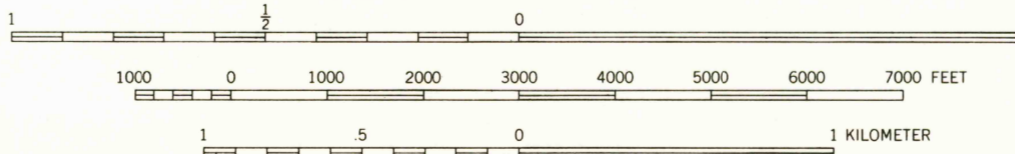
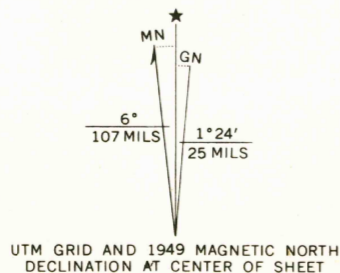
Topography from aerial photographs by multiplex methods  
Aerial photographs taken 1947. Field check 1949

Polyconic projection. 1927 North American datum  
10,000-foot grids based on Maryland coordinate system,  
Pennsylvania coordinate system, south zone, and  
West Virginia coordinate system, north zone

Red tint indicates area in which only  
landmark buildings are shown

Contours in strip mine areas compiled from 1947 photography  
Broken contours indicate strip mining  
subsequent to photography

1000-meter Universal Transverse Mercator grid ticks,  
zone 17, shown in blue



CONTOUR INTERVAL 20 FEET  
DATUM IS MEAN SEA LEVEL

THIS MAP COMPLIES WITH NATIONAL MAP ACCURACY STANDARDS  
FOR SALE BY U.S. GEOLOGICAL SURVEY, WASHINGTON, D.C. 20242  
A FOLDER DESCRIBING TOPOGRAPHIC MAPS AND SYMBOLS IS AVAILABLE ON REQUEST  
THIS MAP IS AVAILABLE WITH OR WITHOUT SHADED RELIEF OVERPRINT

USGS  
Historical File  
Topographic Division

U.S.G.S.  
FIND COPY  
TOPOGRAPHIC DIVISION

ROAD CLASSIFICATION  
Heavy-duty ——— Light-duty ———  
Medium-duty ——— Unimproved dirt ———  
U.S. Route ——— State Route ———

CUMBERLAND, MD.-PA.-W.VA.

NE/4 FROSTBURG 15' QUADRANGLE  
N3937.5-W7845.7.5

1949

AMS 5263 III NE—SERIES V833