

CONFLUENCE  
1:62500

U. S. G. S.  
FILE COPY  
Inspection and Editing.

UNITED STATES  
DEPARTMENT OF THE INTERIOR  
GEOLOGICAL SURVEY

STATE OF MARYLAND  
DEPARTMENT OF GEOLOGY, MINES, AND WATER RESOURCES  
JOSEPH T. SINGEWALD, JR., DIRECTOR

STATE OF PENNSYLVANIA  
DEPARTMENT OF INTERNAL AFFAIRS  
WILLIAM S. LIVENGOD, JR., SECRETARY  
TOPOGRAPHIC AND GEOLOGIC SURVEY  
STANLEY HOLMAN CATHCART, STATE GEOLOGIST

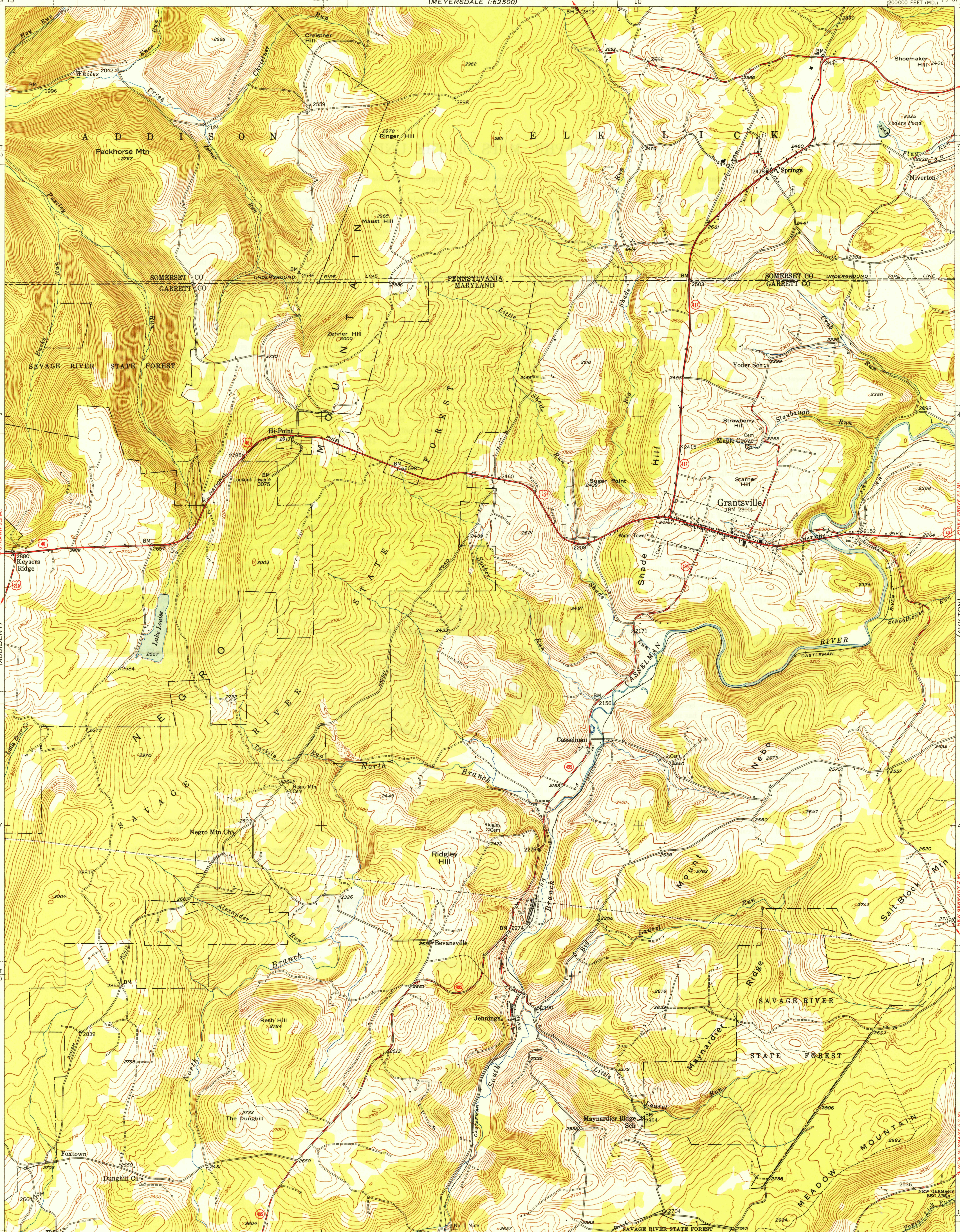
GRANTSVILLE QUADRANGLE  
MARYLAND-PENNSYLVANIA  
7.5 MINUTE SERIES (TOPOGRAPHIC)

(MEYERSDALE)  
1:62500

U. S. G. S.  
FILE COPY  
Inspection and Editing.

U. S. G. S.  
FILE COPY  
Inspection and Editing.

3215

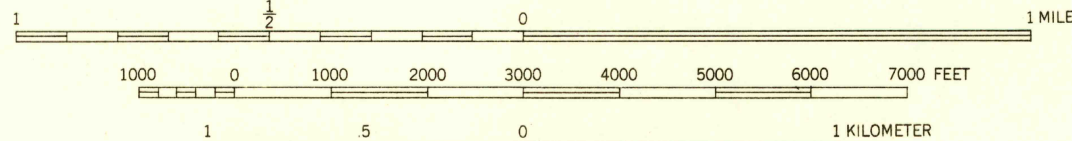


Mapped, edited, and published by the Geological Survey  
Control by USGS

Topography from aerial photographs by multiplex methods  
Aerial photographs taken 1946. Field check 1946

Polycyclic projection. 1927 North American datum  
10,000-foot grids based on Maryland coordinate system  
and Pennsylvania coordinate system, south zone.

SCALE 1:24,000



CONTOUR INTERVAL 20 FEET  
DATUM IS MEAN SEA LEVEL

USGS  
Historical File  
Topographic Division

ROAD CLASSIFICATION  
Heavy-duty. ——— 4 LANE LANE Improved dirt. ———  
Medium-duty. ——— 4 LANE LANE Unimproved dirt. ———  
Loose-surface, graded, or narrow hard-surface. - - -  
U. S. Route      State Route

U. S. G. S.  
FILE COPY  
Inspection and Editing.

GRANTSVILLE, MD-PA.

N 3937.5—W 7907.5/7.5

PRINTED 1949 JAN 19 1949

THIS MAP COMPLIES WITH NATIONAL MAP ACCURACY STANDARDS  
FOR SALE BY U. S. GEOLOGICAL SURVEY, WASHINGTON 25, D. C.