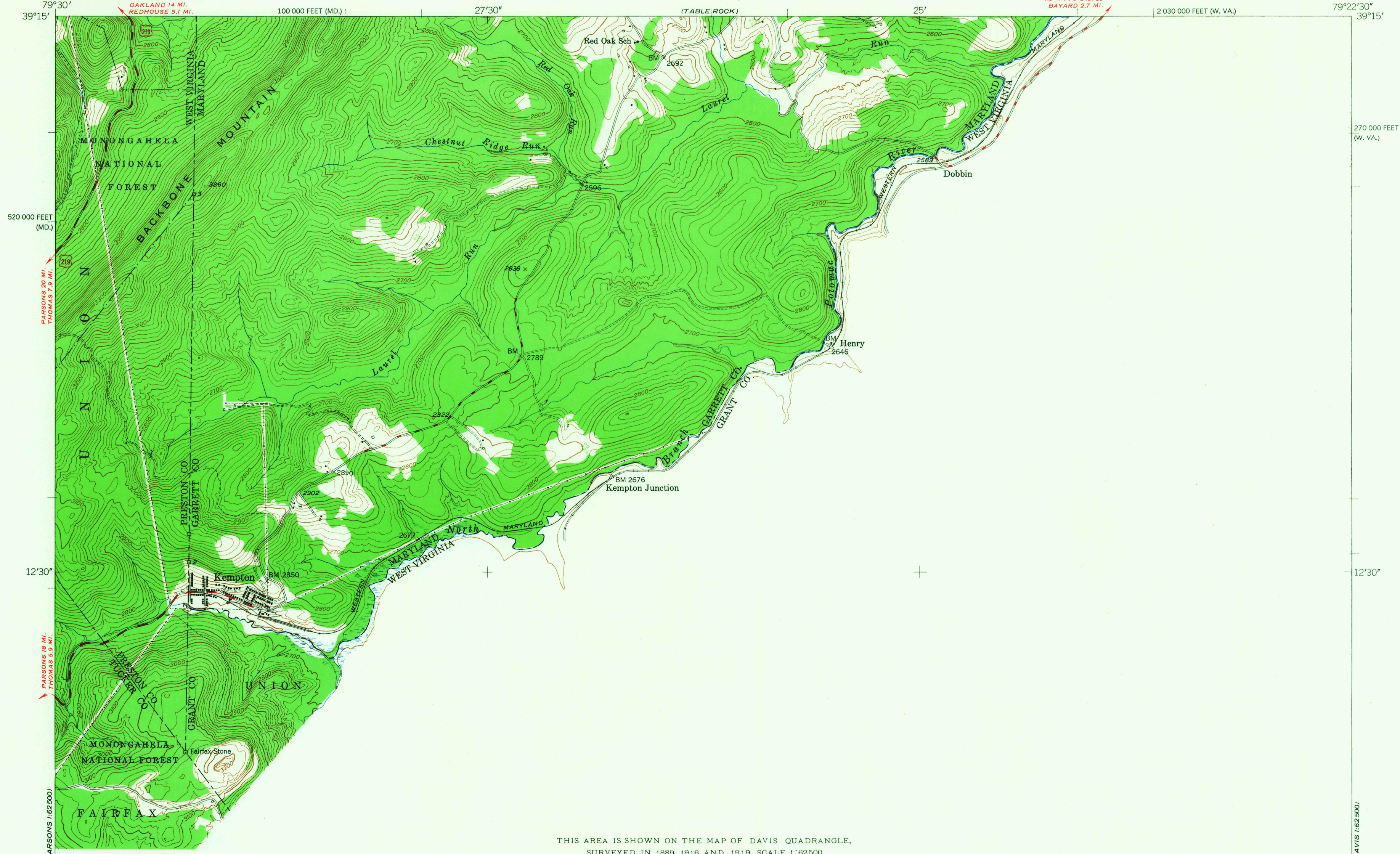


UNITED STATES
DEPARTMENT OF THE INTERIOR
GEOLOGICAL SURVEY

STATE OF MARYLAND
DEPARTMENT OF GEOLOGY, MINES, AND WATER RESOURCES
JOSEPH T. SINGEWALD, JR., DIRECTOR

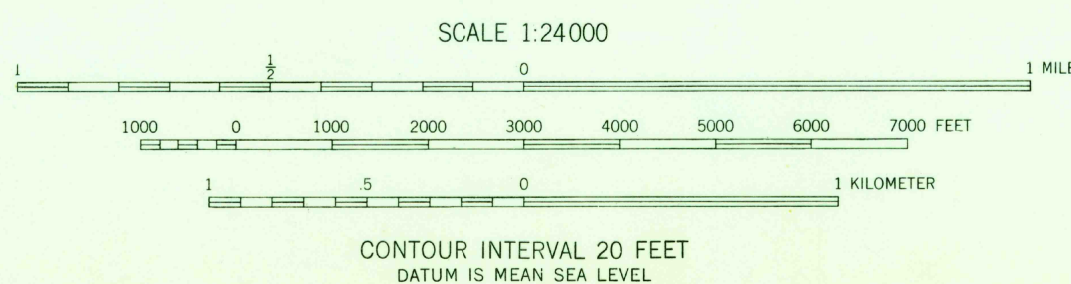
KEMPTON QUADRANGLE
MARYLAND-WEST VIRGINIA
7.5 MINUTE SERIES (TOPOGRAPHIC)
NW/4 DAVIS 15' QUADRANGLE



THIS AREA IS SHOWN ON THE MAP OF DAVIS QUADRANGLE,
SURVEYED IN 1889, 1916 AND 1919, SCALE 1:62500

Mapped, edited, and published by the Geological Survey
Control by USGS and USC&GS
Topography from aerial photographs by multiplex methods
Aerial photographs taken 1946. Field check 1948
Polyconic projection, 1927 North American datum
10,000-foot grids based on Maryland coordinate system
and West Virginia coordinate system, north zone
Contours in strip mine areas compiled from 1946 photography

TRUE NORTH
MAGNETIC NORTH
APPROXIMATE MEAN
DECLINATION, 1948



THIS MAP COMPLIES WITH NATIONAL MAP ACCURACY STANDARDS
FOR SALE BY U. S. GEOLOGICAL SURVEY, WASHINGTON 25, D. C.

USGS
Historical File
Topographic Division

U.S.G.S.
FILE COPY
TOPOGRAPHIC DIVISION

ROAD CLASSIFICATION
HARD-SURFACE ALL WEATHER ROADS DRY WEATHER ROADS
Heavy-duty... 4 LANE 16 LANE Improved dirt...
Medium-duty... 4 LANE 16 LANE Unimproved dirt...
Loose-surface, graded, or narrow hard-surface...
U. S. Route State Route

KEMPTON, MD.-W. VA.
NW/4 DAVIS 15' QUADRANGLE
N3907.5-W7922.5/7.5

EDITION OF 1949

SEE W. VA. JACKET
ALSO SEE DAVIS, WVA-MD.