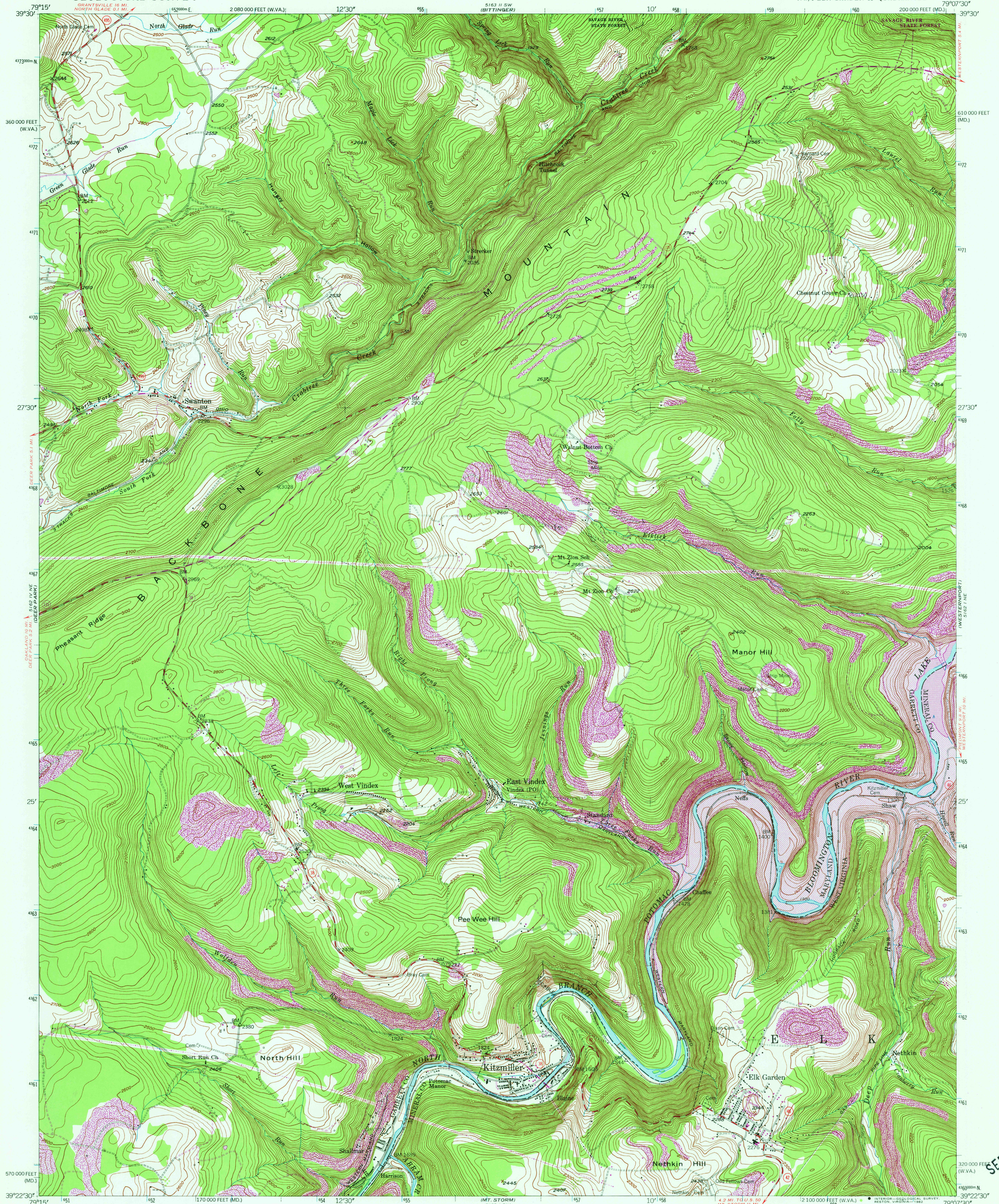


UNITED STATES  
DEPARTMENT OF THE INTERIOR  
GEOLOGICAL SURVEY

STATE OF MARYLAND  
MARYLAND GEOLOGICAL SURVEY

KITZMILLER QUADRANGLE  
MARYLAND-WEST VIRGINIA  
7.5 MINUTE SERIES (TOPOGRAPHIC)  
NW/4 ELK GARDEN 15' QUADRANGLE



Maped, edited, and published by the Geological Survey

Control by USGS and NOS/NOAA

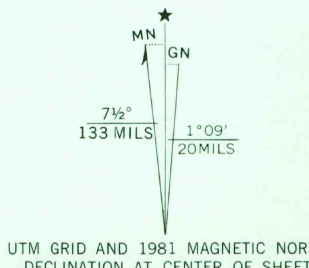
Topography by photogrammetric methods from aerial photographs taken 1946. Field checked 1948

Polyconic projection. 10,000-foot grid ticks based on Maryland coordinate system and West Virginia coordinate system, north zone. 1000-meter Universal Transverse Mercator grid ticks, zone 17, shown in blue. 1927 North American Datum. To place on the predicted North American Datum 1983 move the projection lines 6 meters south and 21 meters west as shown by dashed corner ticks

There may be private inholdings within the boundaries of the National or State reservations shown on this map

Revisions shown in purple and woodland compiled in cooperation with State of West Virginia agencies from aerial photographs taken 1979 and other sources. This information not field checked. Map edited 1981

Purple hatching indicates areas to be submerged by Bloomington Lake at elevation 1500 feet



CONTOUR INTERVAL 20 FEET  
NATIONAL GEODETIC VERTICAL DATUM OF 1929

THIS MAP COMPLIES WITH NATIONAL MAP ACCURACY STANDARDS  
FOR SALE BY U. S. GEOLOGICAL SURVEY, RESTON, VIRGINIA 22092  
A FOLDER DESCRIBING TOPOGRAPHIC MAPS AND SYMBOLS IS AVAILABLE ON REQUEST



ROAD CLASSIFICATION  
Primary highway, all weather, hard surface  
Secondary highway, all weather, hard surface  
Light-duty road, all weather, improved surface  
Unimproved road, fair or dry weather

Interstate Route U. S. Route State Route

KITZMILLER, MD.-W. VA.  
NW/4 ELK GARDEN 15' QUADRANGLE  
N3922.5-W7907.5/7.5

1948  
PHOTOREVISED 1981  
DMA 5162 I NW-SERIES V833

SEP 7 1982

3550