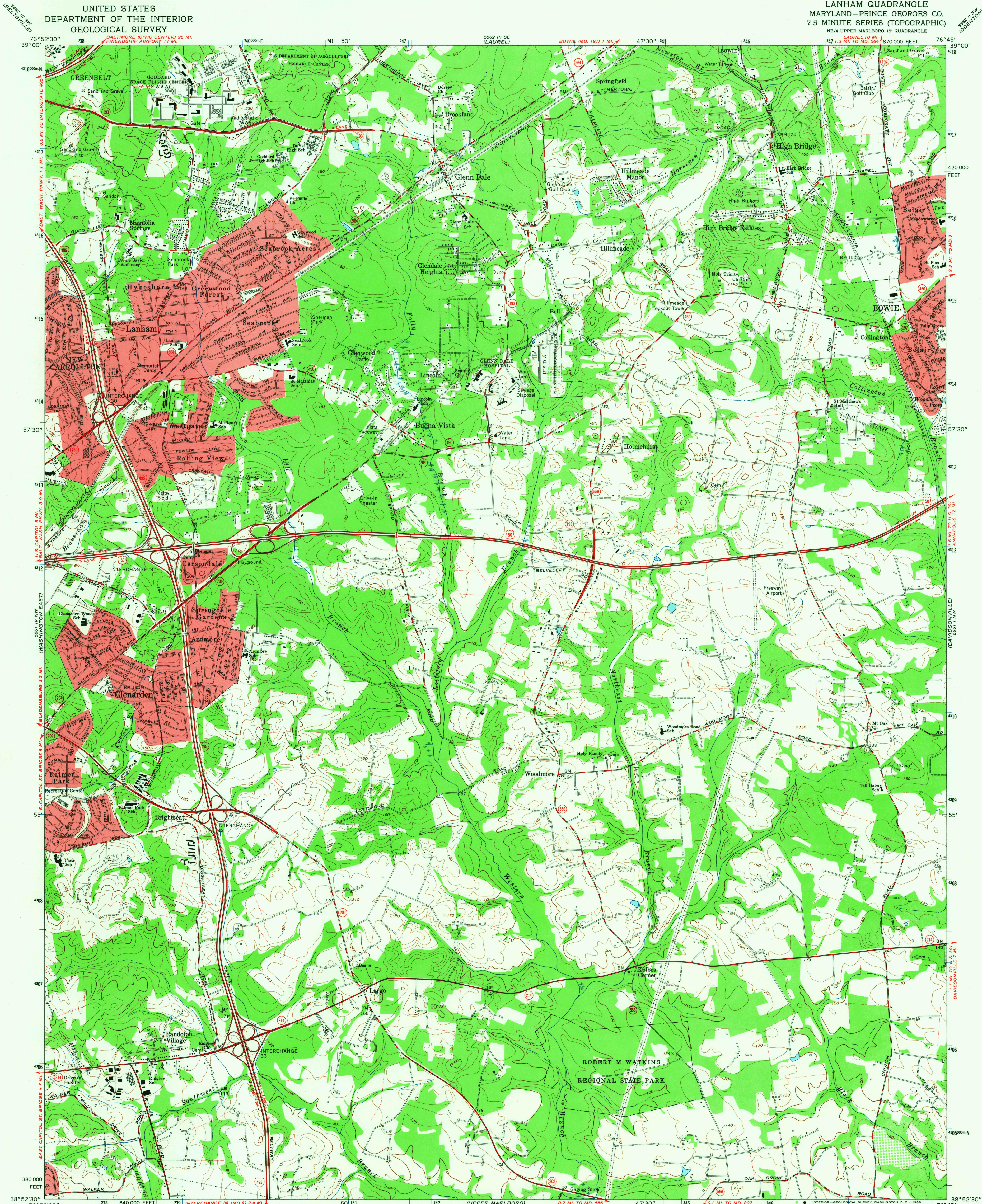


UNITED STATES  
DEPARTMENT OF THE INTERIOR  
GEOLOGICAL SURVEY

LANHAM QUADRANGLE  
MARYLAND-PRINCE GEORGES CO.  
7.5 MINUTE SERIES (TOPOGRAPHIC)  
NE/4 UPPER MARLBORO 15' QUADRANGLE  
LAUREL 10 MI.  
BOWIE (MD. 1971) 1 MI.



Mapped by the Army Map Service  
Edited and published by the Geological Survey

Control by USGS and USC&GS

Planimetry by photogrammetric methods from aerial photographs  
taken 1938 and 1943. Topography by planetable surveys 1944  
Revised by the Geological Survey 1965

Polyconic projection. 1927 North American datum  
10,000-foot grid based on Maryland coordinate system  
1000-meter Universal Transverse Mercator grid ticks, zone 18,  
shown in blue

Fine red dashed lines indicate selected fence and field lines where  
generally visible on aerial photographs. This information is unchecked  
Red tint indicates areas in which only landmark buildings are shown

UTM GRID AND 1965 MAGNETIC NORTH  
DECLINATION AT CENTER OF SHEET

SCALE 1:24,000  
CONTOUR INTERVAL 20 FEET  
DATUM IS MEAN SEA LEVEL

THIS MAP COMPLIES WITH NATIONAL MAP ACCURACY STANDARDS  
FOR SALE BY U. S. GEOLOGICAL SURVEY, WASHINGTON, D. C. 20242  
A FOLDER DESCRIBING TOPOGRAPHIC MAPS AND SYMBOLS IS AVAILABLE ON REQUEST

USGS  
Historical File  
Topographic Division



ROAD CLASSIFICATION  
Heavy-duty ——— Light-duty ———  
Medium-duty ——— Unimproved dirt ———  
Interstate Route U.S. Route State Route

U.S.G.S.  
LANHAM, MD.  
NE/4 UPPER MARLBORO 15' QUADRANGLE  
N3852.5—W7645.7.5

1965  
AMS 5661 IV NE-SERIES V833

5725  
NOV 2 1965