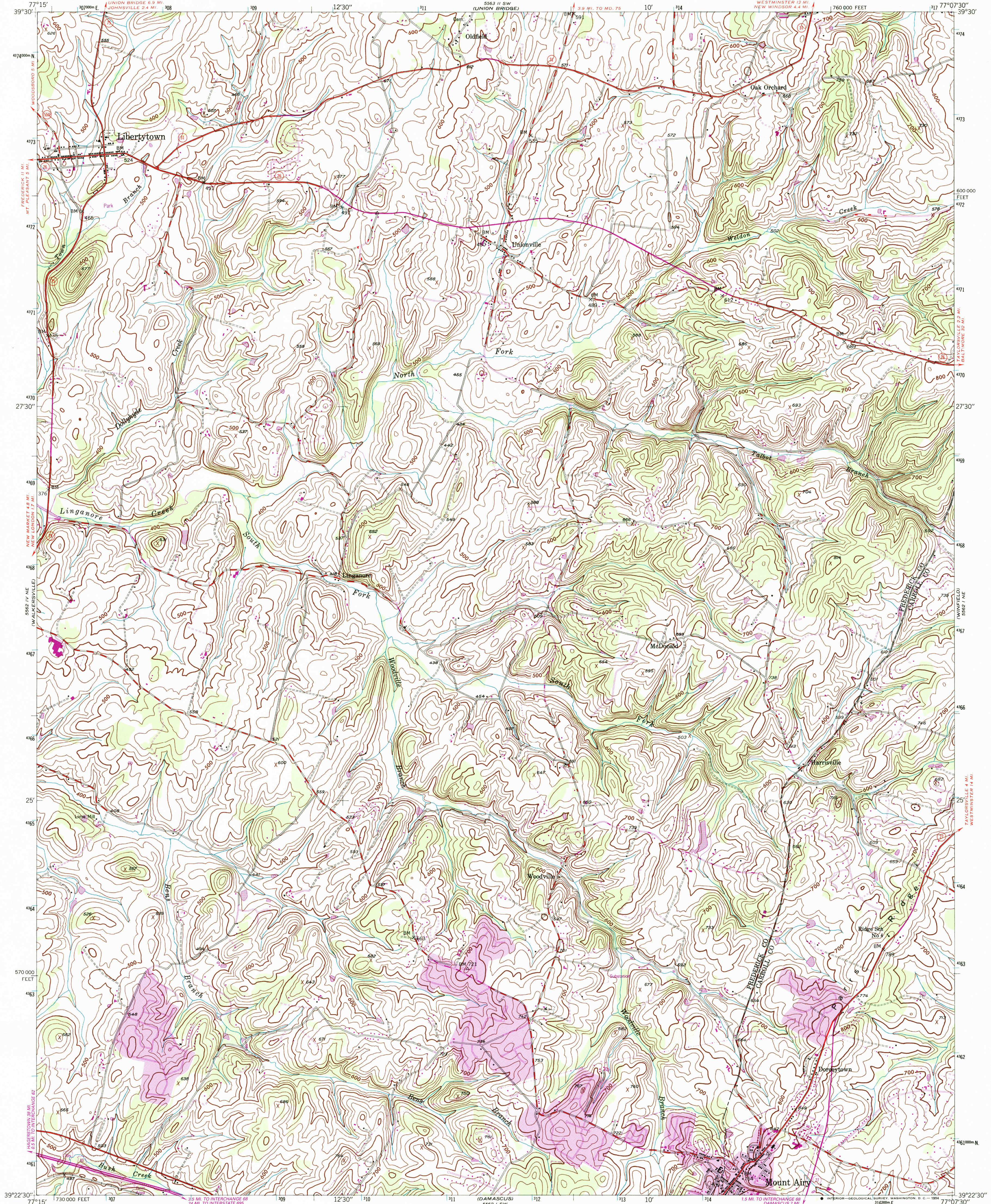


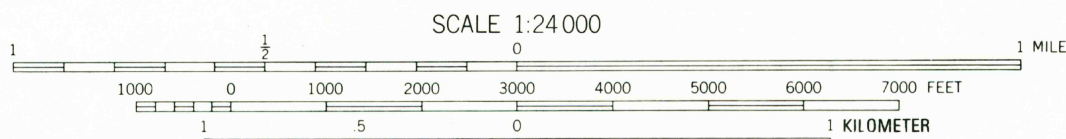
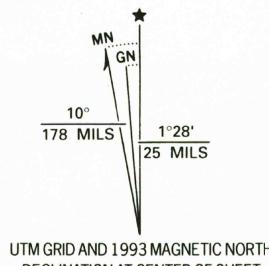
UNITED STATES
DEPARTMENT OF THE INTERIOR
GEOLOGICAL SURVEY

UNITED STATES
DEPARTMENT OF THE ARMY
CORPS OF ENGINEERS

LIBERTYTOWN QUADRANGLE
MARYLAND
7.5 MINUTE SERIES (TOPOGRAPHIC)
NW 1/4 MOUNT AIRY 15' QUADRANGLE



Mapped by the U.S. Forest Service
Revised by the United States Geological Survey
Control by USGS, NOS/NOAA, and USSCS
Topography by photogrammetric methods from aerial photographs taken 1943
Projection and 10,000-foot grid ticks: Maryland coordinate system, (Lambert conformal conic)
1000-meter Universal Transverse Mercator grid ticks, zone 18, shown in blue
1927 North American Datum (NAD 27)
North American Datum of 1983 (NAD 83) is shown by dashed corner ticks
The values of the shift between NAD 27 and NAD 83 for 7.5-minute intersections are given in USGS Bulletin 1875
No distinction is made between dwellings, barns, commercial and industrial buildings



CONTOUR INTERVAL 20 FEET
NATIONAL GEODETIC VERTICAL DATUM OF 1929

COMPLIES WITH U.S. GEOLOGICAL SURVEY STANDARDS FOR SPATIAL ACCURACY - CLASS 2
FOR SALE BY U.S. GEOLOGICAL SURVEY, DENVER, COLORADO 80226, OR RESTON, VIRGINIA 22092
A FOLDER DESCRIBING TOPOGRAPHIC MAPS AND SYMBOLS IS AVAILABLE ON REQUEST



QUADRANGLE LOCATION

Revisions shown in purple by the U.S. Geological Survey from aerial photographs taken 1988 and other sources
This information not field checked. Map edited 1993
Information shown in purple may not meet USGS content standards and may conflict with previously mapped contours
Purple tint indicates extension of urban areas

ROAD CLASSIFICATION
Primary highway, hard surface
Secondary highway, hard surface
Unimproved road
Light-duty road, hard or improved surface
Unimproved road
Interstate Route
U. S. Route
State Route

LIBERTYTOWN, MD.
NW 1/4 MOUNT AIRY 15' QUADRANGLE
39077-D2-TF-024

1944
REVISED 1993
DMA 5562.1 NW-SERIES V833

