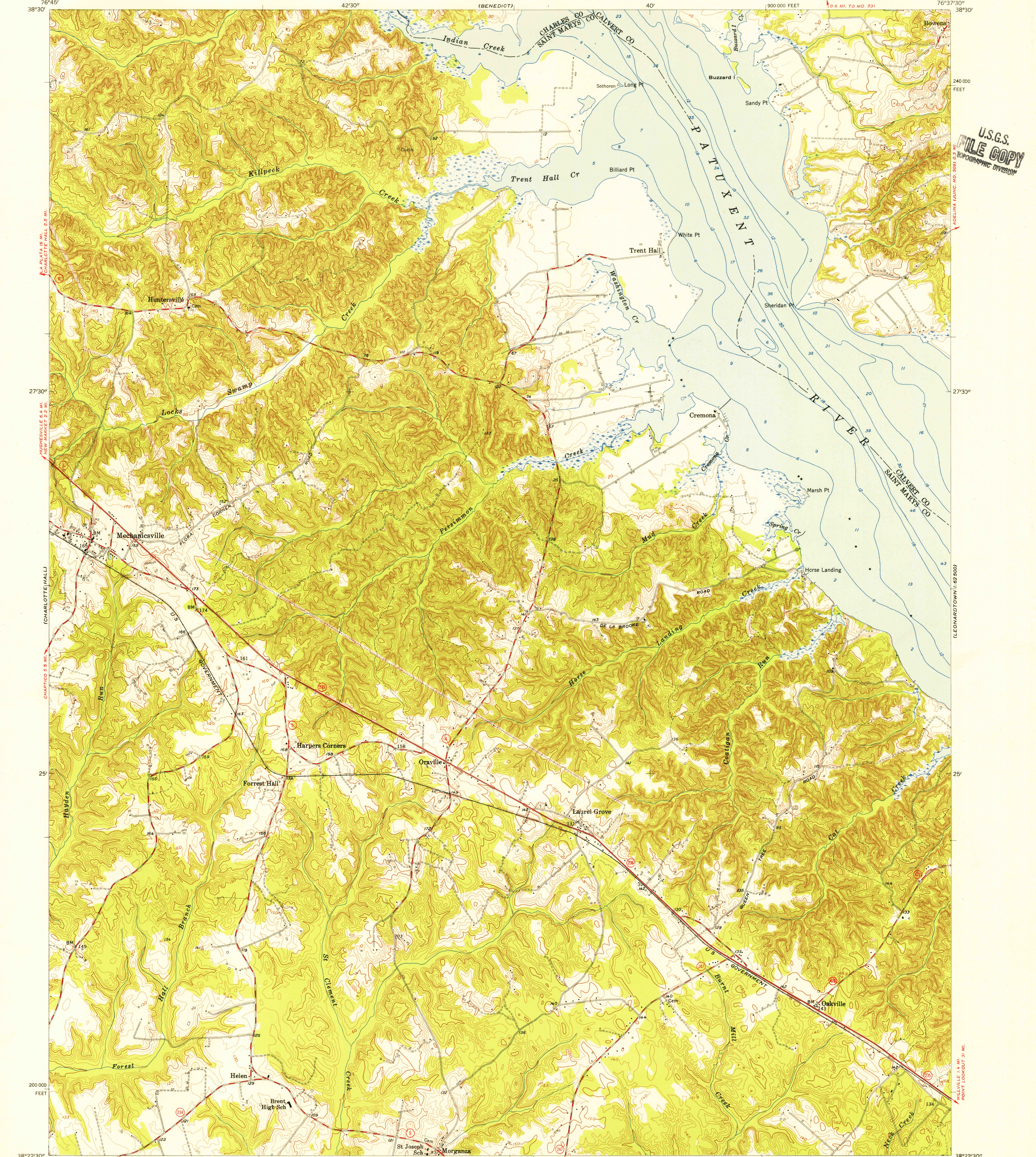


UNITED STATES  
DEPARTMENT OF THE INTERIOR  
GEOLOGICAL SURVEY

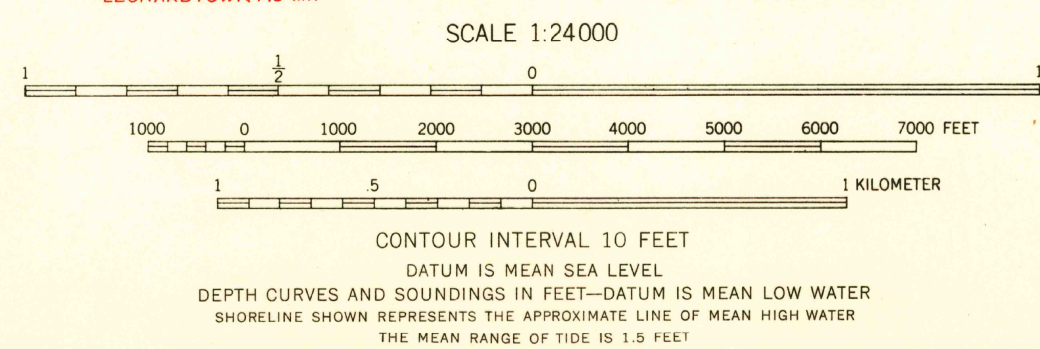
MECHANICSVILLE QUADRANGLE  
MARYLAND  
7.5 MINUTE SERIES (TOPOGRAPHIC)  
NW 1/4 LEONARDTOWN 15' QUADRANGLE



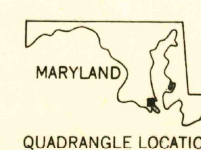
U.S.G.S.  
FILE COPY  
TOPOGRAPHIC DIVISION

Mapped, edited, and published by the Geological Survey  
Control by USGS and USC&GS  
Topography from aerial photographs by stereophotogrammetric  
methods. Aerial photographs taken 1952. Field check 1953  
Hydrography from USC&GS chart 539 dated 1951  
Polyconic projection. 1927 North American datum  
10,000-foot grid based on Maryland coordinate system  
Unchecked elevations are shown in brown

TRUE NORTH  
MAGNETIC NORTH  
APPROXIMATE MEAN  
DECLINATION, 1953



USGS  
Historical File  
Topographic Division



U.S.G.S.  
FILE COPY  
TOPOGRAPHIC DIVISION

ROAD CLASSIFICATION  
Heavy-duty ——— Light-duty ———  
Medium-duty ——— Unimproved dirt ———  
U. S. Route ——— State Route ———

MECHANICSVILLE, MD.  
NW 1/4 LEONARDTOWN 15' QUADRANGLE  
N 3822.5 - W 7637.5 / 7.5

1953

MAR 2 1956

2115