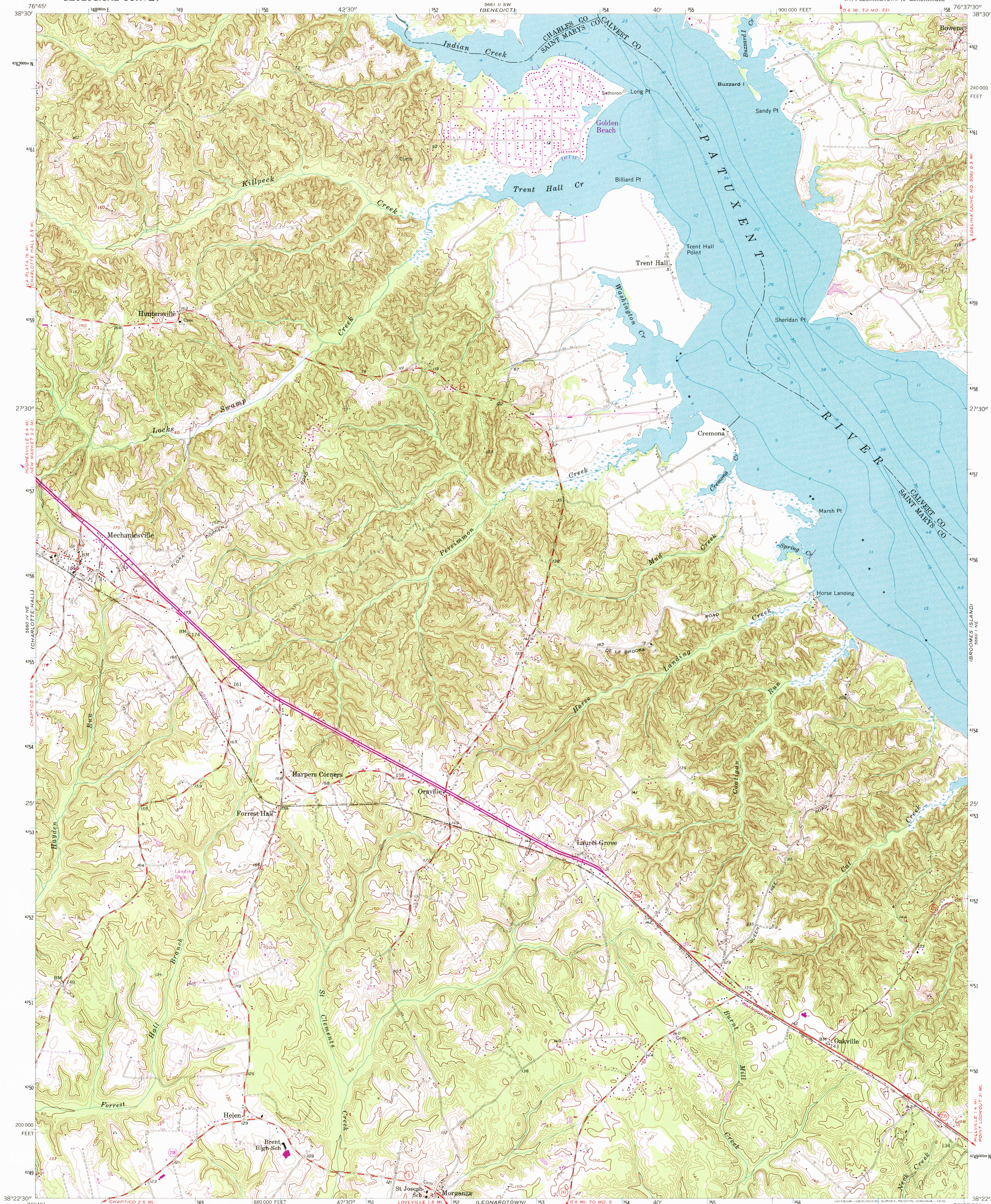


UNITED STATES
DEPARTMENT OF THE INTERIOR
GEOLOGICAL SURVEY

MECHANICSVILLE QUADRANGLE
MARYLAND
7.5 MINUTE SERIES (TOPOGRAPHIC)
NW/4 LEONARDTOWN 15' QUADRANGLE



Mapped, edited, and published by the Geological Survey

Control by USGS and USC&GS

Topography from aerial photographs by stereophotogrammetric methods. Aerial photographs taken 1952. Field check 1953

Hydrography from USC&GS chart 539 dated 1951

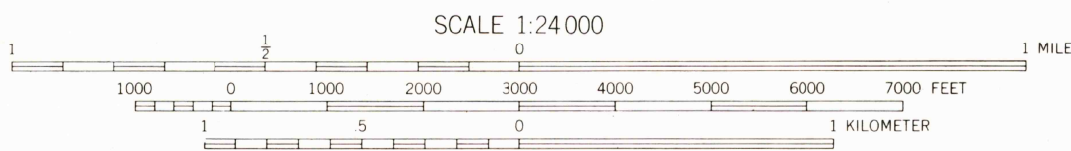
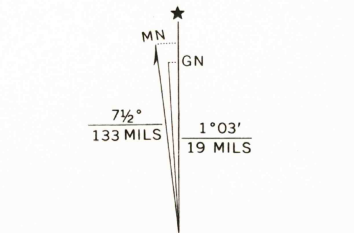
Polycyclic projection. 1927 North American datum

10,000-foot grid based on Maryland coordinate system

Unchecked elevations are shown in brown

1000-meter Universal Transverse Mercator grid ticks, zone 18, shown in blue

Revisions shown in purple compiled from aerial photographs taken 1974. This information not field checked

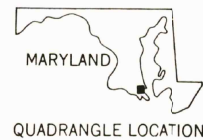


SCALE 1:24,000

CONTOUR INTERVAL 10 FEET
NATIONAL GEODETIC VERTICAL DATUM OF 1929
DEPTH CURVES AND SOUNDINGS IN FEET—DATUM IS MEAN LOW WATER
SHORELINE SHOWN REPRESENTS THE APPROXIMATE LINE OF MEAN HIGH WATER
THE MEAN RANGE OF TIDE IS 1.5 FEET

THIS MAP COMPLIES WITH NATIONAL MAP ACCURACY STANDARDS
FOR SALE BY U.S. GEOLOGICAL SURVEY, RESTON, VIRGINIA 22092
A FOLDER DESCRIBING TOPOGRAPHIC MAPS AND SYMBOLS IS AVAILABLE ON REQUEST

ROAD CLASSIFICATION
Heavy-duty ——— Light-duty ———
Medium-duty ——— Unimproved dirt ———
U.S. Route ——— State Route ———



MECHANICSVILLE, MD.
NW/4 LEONARDTOWN 15' QUADRANGLE
N 3822.5—W 7637.5/7.5

1953
PHOTOREVISED 1974
AMS 5660 1 NW—SERIES V833

RECEIVED

MAY 31 P.M.

USGS NMD
HISTORICAL MAP ARCHIVES



ISBN 0-607-23611-6

9 780607 236118