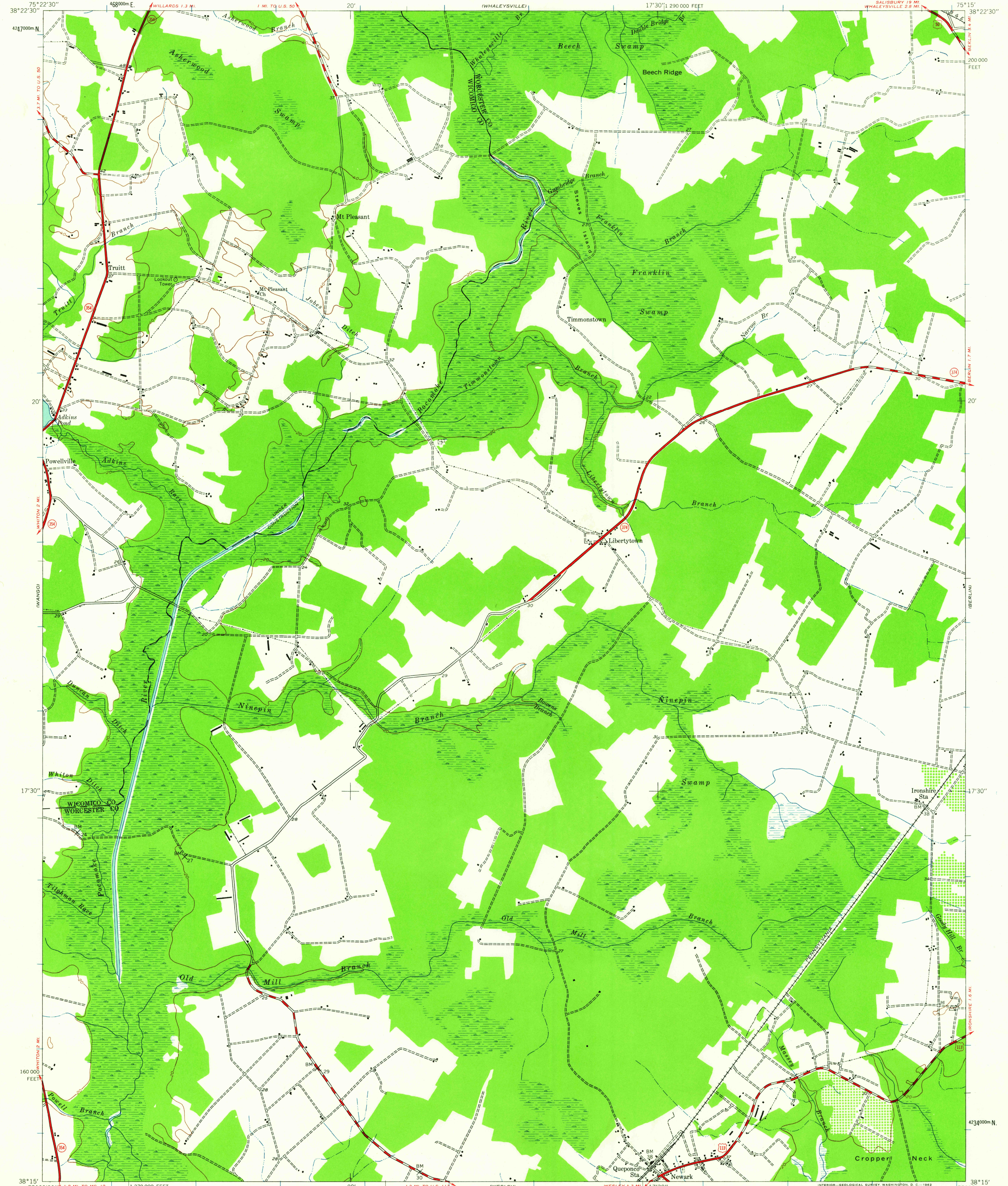


UNITED STATES
DEPARTMENT OF THE INTERIOR
GEOLOGICAL SURVEY

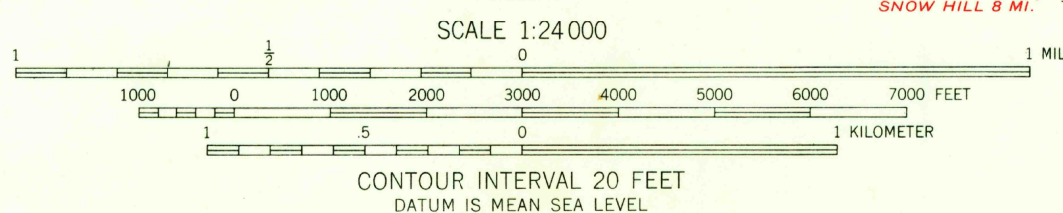
NINEPIN QUADRANGLE
MARYLAND
7.5 MINUTE SERIES (TOPOGRAPHIC)
SE/4 PITTSVILLE 15' QUADRANGLE
SALISBURY 18 MI.
WHALEYSVILLE 2.8 MI.



Maped by the Army Map Service
Published for civil use by the Geological Survey
Control by USC&GS

Topography by photogrammetric methods from aerial photographs
taken 1942 and planetable surveys 1942
Polyconic projection. 1927 North American datum
10,000-foot grid based on Maryland coordinate system
1000-meter Universal Transverse Mercator grid ticks,
zone 18, shown in blue

TRUE NORTH
MAGNETIC NORTH
APPROXIMATE MEAN
DECLINATION, 1942



THIS MAP COMPLIES WITH NATIONAL MAP ACCURACY STANDARDS
FOR SALE BY U. S. GEOLOGICAL SURVEY, WASHINGTON 25, D. C.
A FOLDER DESCRIBING TOPOGRAPHIC MAPS AND SYMBOLS IS AVAILABLE ON REQUEST

USGS
Historical File
Topographic Division



ROAD CLASSIFICATION
Heavy-duty ——— Light-duty ———
Medium-duty ——— Unimproved dirt ———
U. S. Route ——— State Route ———

NINEPIN, MD.
SE/4 PITTSVILLE 15' QUADRANGLE
N3815-W7515/7.5
1942

AUG 28 1962

2045