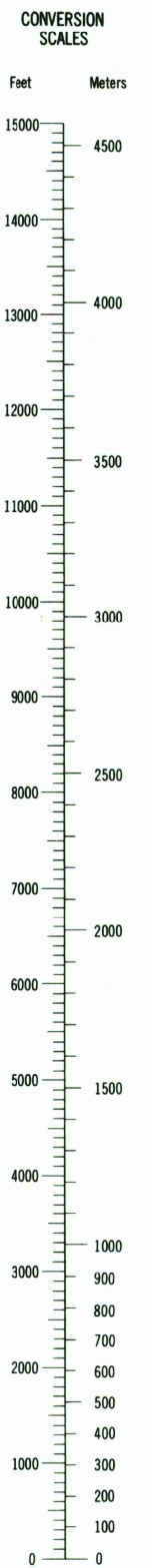
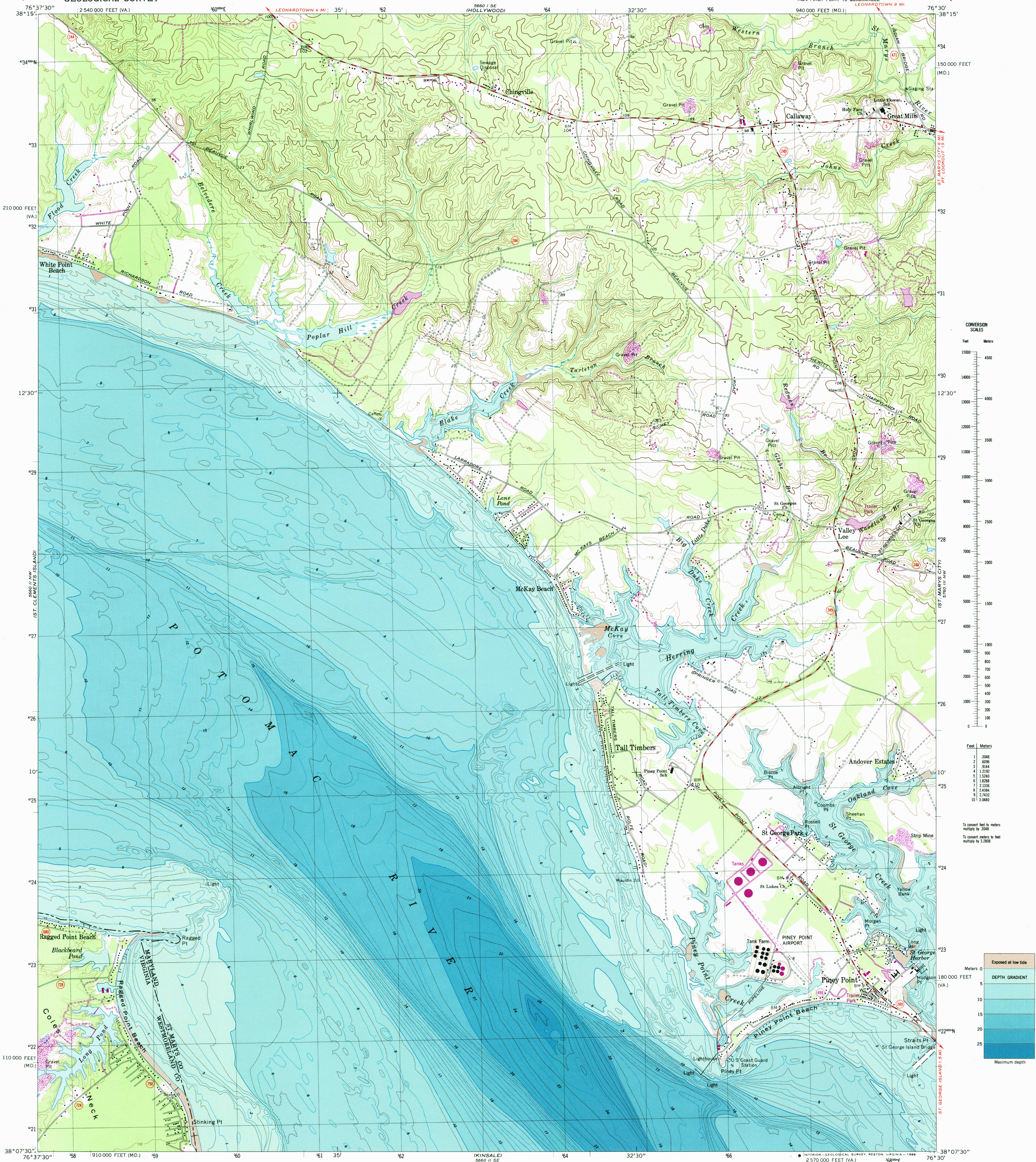


UNITED STATES
DEPARTMENT OF THE INTERIOR
GEOLOGICAL SURVEY

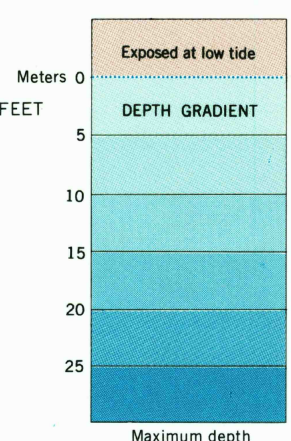
PINEY POINT QUADRANGLE
MARYLAND-VIRGINIA
7.5 MINUTE SERIES (TOPOGRAPHIC-BATHYMETRIC)



Feet	Meters
1	3048
2	6096
3	9144
4	12192
5	15240
6	18288
7	21336
8	24384
9	27432
10	30480

To convert feet to meters
multiply by 3048

To convert meters to feet
multiply by 3.2808



Mapped, edited, and published by the Geological Survey and the National Ocean Survey in cooperation with Commonwealth of Virginia agencies

Control by USGS and NOS/NOAA

Topography by photogrammetric methods from aerial photographs taken 1967. Field checked 1968

Bathymetry compiled by the National Ocean Survey from tide-coordinated hydrographic surveys. This information is not intended for navigational purposes

Mean low water (dotted) line and mean high water (heavy solid) line compiled by NOS from tide-coordinated photographs. Apparent shoreline (outer edge of vegetation) shown by light solid line

Polyconic projection. 10,000-foot grid ticks based on Maryland coordinate system and Virginia coordinate system, north zone

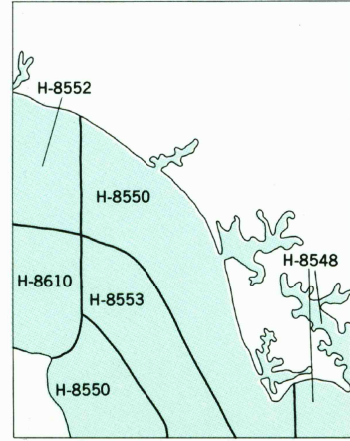
1000-meter Universal Transverse Mercator grid, zone 18

1927 North American Datum

To place on the predicted North American Datum 1983 move the projection lines 9 meters south and 28 meters west as shown by dashed corner ticks

Revisions shown in purple compiled in cooperation with Commonwealth of Virginia agencies from aerial photographs taken 1978 and other sources. This information not field checked. Map edited 1980

NATIONAL OCEAN SURVEY
HYDROGRAPHIC SURVEY INDEX



Survey Number	Survey Date	Survey Scale	Survey Line Spacing (Naut. Miles)
H-8548	1960	1:10,000	02-07
H-8550	1960	1:10,000	01-08
H-8552	1960	1:10,000	02-07
H-8553	1960	1:20,000	03-20
H-8610	1960-61	1:10,000	02-07

SCALE 1:24,000

CONTOUR INTERVAL 10 FEET

DASHED LINES REPRESENT 5-FOOT CONTOURS

NATIONAL GEODETIC VERTICAL DATUM OF 1929

BATHYMETRIC CONTOUR INTERVAL 1 METER

WITH SUPPLEMENTARY 0.5 METER CONTOURS

DATUM IS MEAN LOW WATER

THE RELATIONSHIP BETWEEN THE TWO DATUMS IS VARIABLE

THE MEAN RANGE OF TIDE IS APPROXIMATELY 0.4 METER

BASE MAP COMPLIES WITH NATIONAL MAP ACCURACY STANDARDS

BATHYMETRIC SURVEY DATA COMPLIES WITH INTERNATIONAL HYDROGRAPHIC ORGANIZATION (IHO) SPECIAL PUBLICATION 44 ACCURACY STANDARDS

AND/OR STANDARDS USED AT THE DATE OF THE SURVEY

FOR SALE BY U.S. GEOLOGICAL SURVEY, DENVER, COLORADO 80225 OR RESTON, VIRGINIA 22092

NATIONAL OCEAN SERVICE, ROCKVILLE, MARYLAND 20852

AND VIRGINIA DIVISION OF MINERAL RESOURCES, CHARLOTTESVILLE, VIRGINIA 22903

A FOLDER DESCRIBING TOPOGRAPHIC MAPS AND SYMBOLS IS AVAILABLE ON REQUEST

ROAD CLASSIFICATION

Secondary highway, all weather, Light-duty road, all weather, hard surface

Unimproved road, fair or dry weather

State Route

QUADRANGLE LOCATION

UTM GRID AND 1980 MAGNETIC NORTH DECLINATION AT CENTER OF SHEET

38076-B5-TF-024

1968

PHOTOREVISED 1980

BATHYMETRY ADDED 1982

DMA 5660 II NE-SERIES V833