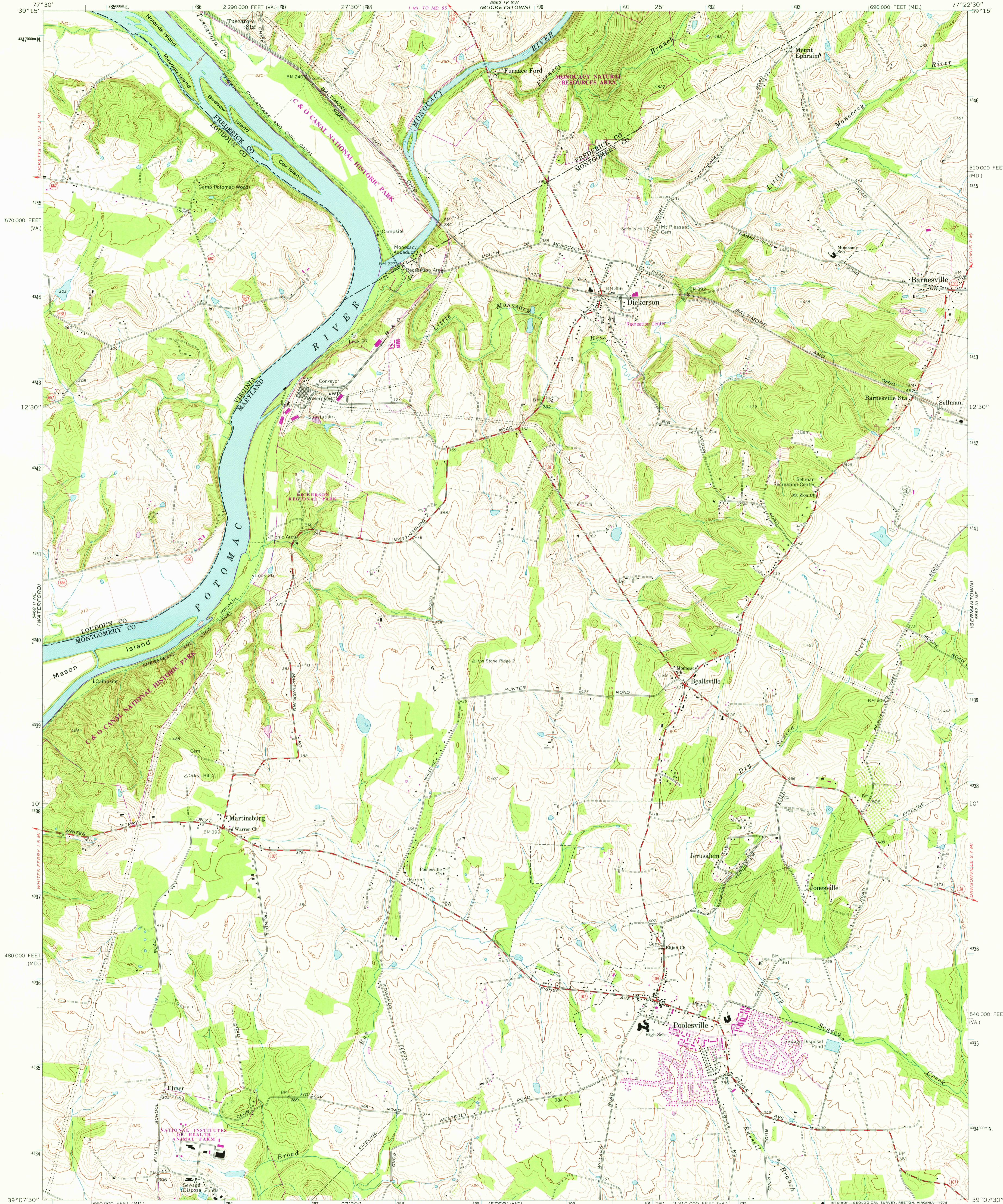
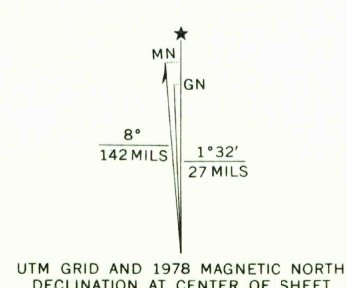


UNITED STATES
DEPARTMENT OF THE INTERIOR
GEOLOGICAL SURVEY

POOLESVILLE QUADRANGLE
MARYLAND-VIRGINIA
7.5 MINUTE SERIES (TOPOGRAPHIC)



Mapped, edited, and published by the Geological Survey in cooperation with Commonwealth of Virginia agencies. Control by USGS and USC&GS. Topography by photogrammetric methods from aerial photographs taken 1965 and 1969. Field checked 1970. Supersedes Army Map Service map dated 1952. Polyconic projection. 1927 North American datum 10,000-foot grids based on Maryland coordinate system, and Virginia coordinate system, north zone. 1000-meter Universal Transverse Mercator grid ticks, zone 18, shown in blue. Fine red dashed lines indicate selected fence and field lines where generally visible on aerial photographs. This information is unchecked. There may be private inholdings within the boundaries of the National or State reservations shown on this map.



SCALE 1:24,000
CONTOUR INTERVAL 10 FEET
NATIONAL GEODETIC VERTICAL DATUM OF 1929

THIS MAP COMPLIES WITH NATIONAL MAP ACCURACY STANDARDS FOR SALE BY U. S. GEOLOGICAL SURVEY, RESTON, VIRGINIA 22092 AND VIRGINIA DIVISION OF MINERAL RESOURCES, CHARLOTTESVILLE, VIRGINIA 22903. A FOLDER DESCRIBING TOPOGRAPHIC MAPS AND SYMBOLS IS AVAILABLE ON REQUEST.

Revisions shown in purple compiled in cooperation with Commonwealth of Virginia agencies from aerial photographs taken 1977 and other source data. This information not field checked. Map edited 1978. Boundary lines shown in purple compiled from latest information available from the controlling authority.

ROAD CLASSIFICATION

| | |
|---------------------------------|---|
| Primary highway, hard surface | Light-duty road, hard or improved surface |
| Secondary highway, hard surface | Unimproved road |

Interstate Route U. S. Route State Route

USGS Historical File Topographic Division

POOLESVILLE, MD. - VA.

N3907.5—W7722.5/7.5

1970
PHOTOREVISED 1978
AMS 5562 III NW—SERIES V833

MAR 16 1979

3300