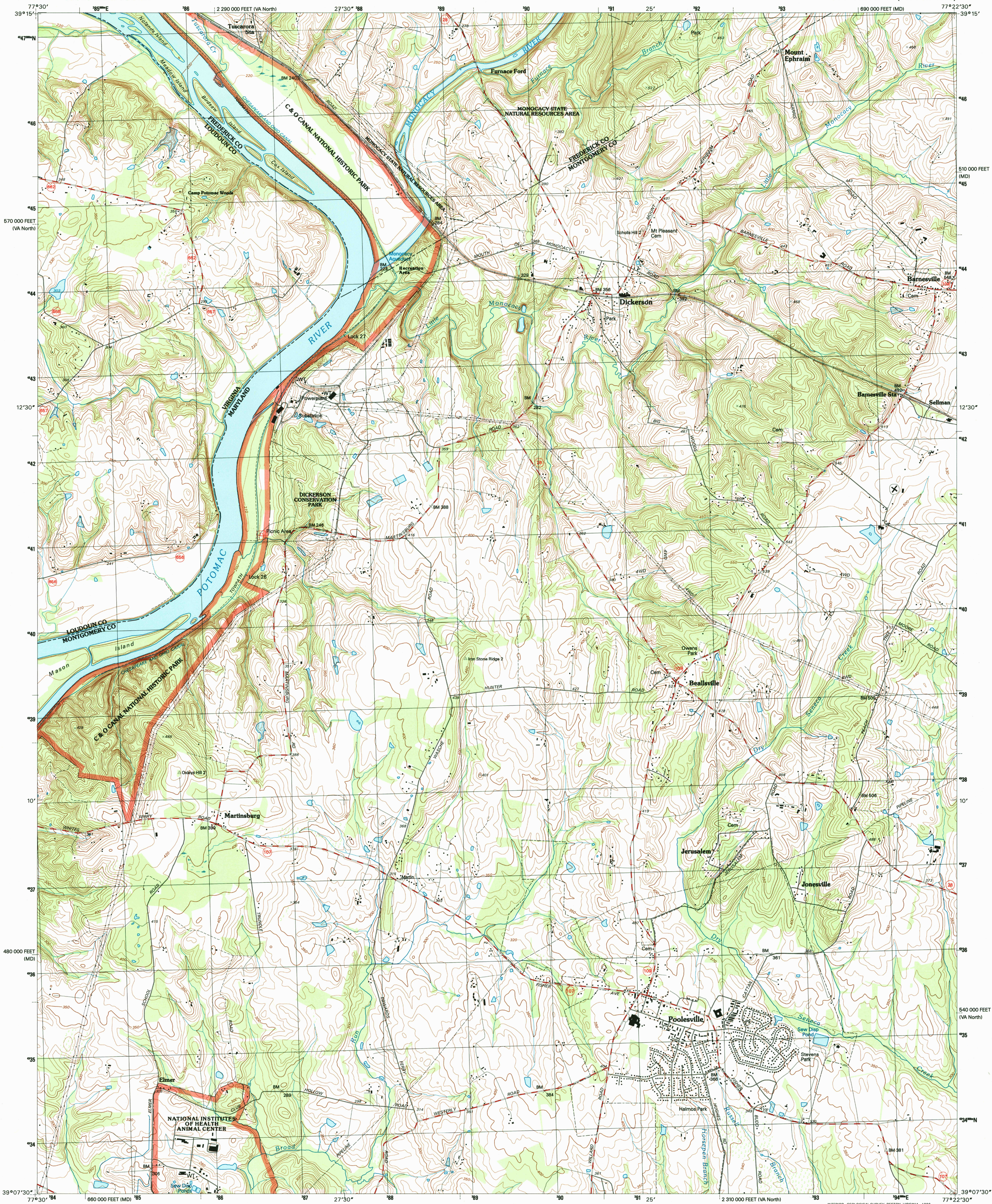


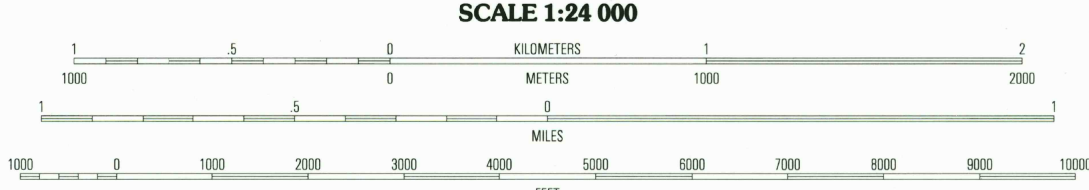
UNITED STATES
DEPARTMENT OF THE INTERIOR
GEOLOGICAL SURVEY

POOLESVILLE QUADRANGLE
MARYLAND-VIRGINIA
7.5-MINUTE SERIES (TOPOGRAPHIC)



Produced by the United States Geological Survey
Compiled by photogrammetric methods from imagery dated 1965 and 1969. Field checked 1970. Revised from imagery dated 1988
Survey control current as of 1970. Map edited 1996
Contours not revised. Contours that conflict with revised planimetry are dashed
North American Datum of 1927 (NAD 27). Projection and 1 000-meter grid: Universal Transverse Mercator, zone 18
10 000-foot ticks: Maryland coordinate system, and Virginia coordinate system, north zone
North American Datum of 1983 (NAD 83) is shown by dashed corner ticks. The values of the shift between NAD 27 and NAD 83 for 7.5-minute intersections are obtainable from National Geodetic Survey NADCON software
There may be private inholdings within the boundaries of the National or State Reservations shown on this map

10° 15' 187 MILS
1° 32' 27 MILS
UTM GRID AND 1996 MAGNETIC NORTH DECLINATION AT CENTER OF SHEET



CONTOUR INTERVAL 10 FEET
NATIONAL GEODETIC VERTICAL DATUM OF 1929

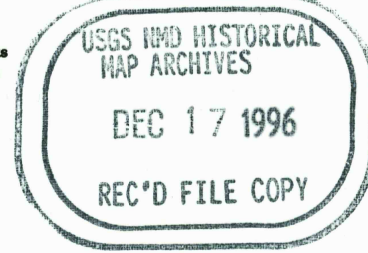
THIS MAP COMPLIES WITH NATIONAL MAP ACCURACY STANDARDS
FOR SALE BY U.S. GEOLOGICAL SURVEY, DENVER, COLORADO 80225, OR RESTON, VIRGINIA 22092
AND VIRGINIA DIVISION OF MINERAL RESOURCES, CHARLOTTESVILLE, VIRGINIA 22903
A FOLDER DESCRIBING TOPOGRAPHIC MAPS AND SYMBOLS IS AVAILABLE ON REQUEST



QUADRANGLE LOCATION

1	2	3
4	5	6
7	8	9

Primary highway
hard surface
Secondary highway
hard surface
Light-duty road, hard or
improved surface
Unimproved road
Interstate Route
U.S. Route
State Route



POOLESVILLE, MD-VA
39077-B4-TF-024
1988
DMA 5562 III NW-SERIES V833

