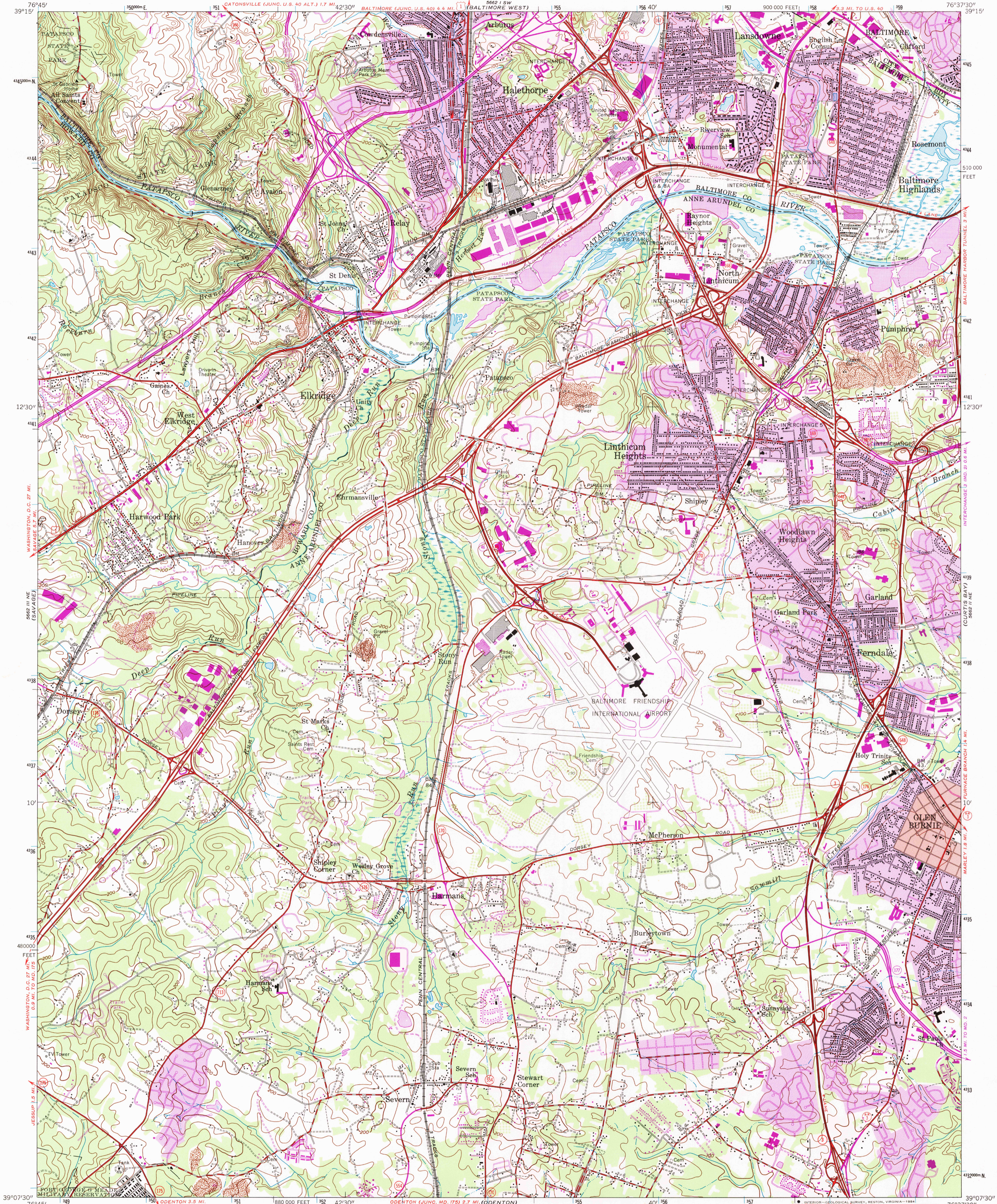
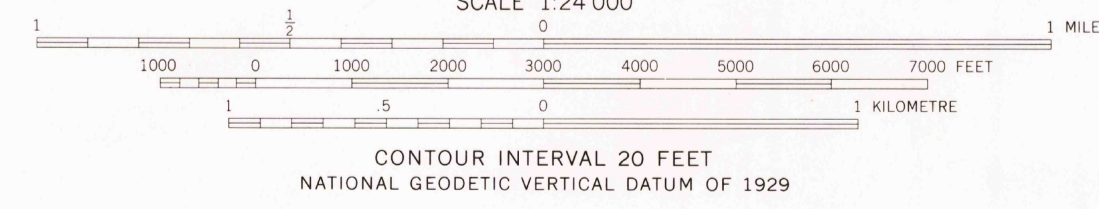
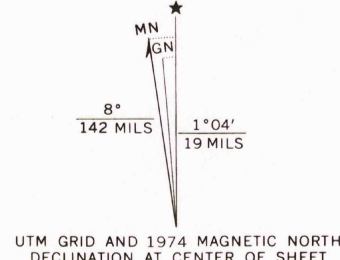


UNITED STATES
DEPARTMENT OF THE INTERIOR
GEOLOGICAL SURVEY

RELAY QUADRANGLE
MARYLAND
7.5 MINUTE SERIES (TOPOGRAPHIC)
NW 1/4 RELAY 15' QUADRANGLE



Mapped by the Army Map Service
Published for civil use by the Geological Survey
Control by USGS, USC&GS, USCE, and SCS
Topography from aerial photographs by photogrammetric methods
and by planetable surveys 1943. Planimetric detail revised
from aerial photographs taken 1955. Field check 1957
Polyconic projection. 1927 North American datum
10,000-foot grid based on Maryland coordinate system
1000 metre Universal Transverse Mercator grid ticks,
zone 18, shown in blue
Red tint indicates area in which only
landmark buildings are shown
Revisions shown in purple compiled by the Geological Survey from
aerial photographs taken 1966 and 1974. This information not field checked
Purple tint indicates extension of urban areas



ROAD CLASSIFICATION
Heavy-duty ——— Light-duty ———
Medium-duty ——— Unimproved dirt ———
Interstate Route U.S. Route State Route

RELAY, MD.
NW 1/4 RELAY 15' QUADRANGLE
N3907.5—W7637.5/7.5

1957
PHOTOREVISED 1966 AND 1974
AMS 5662 II NW—SERIES V833

