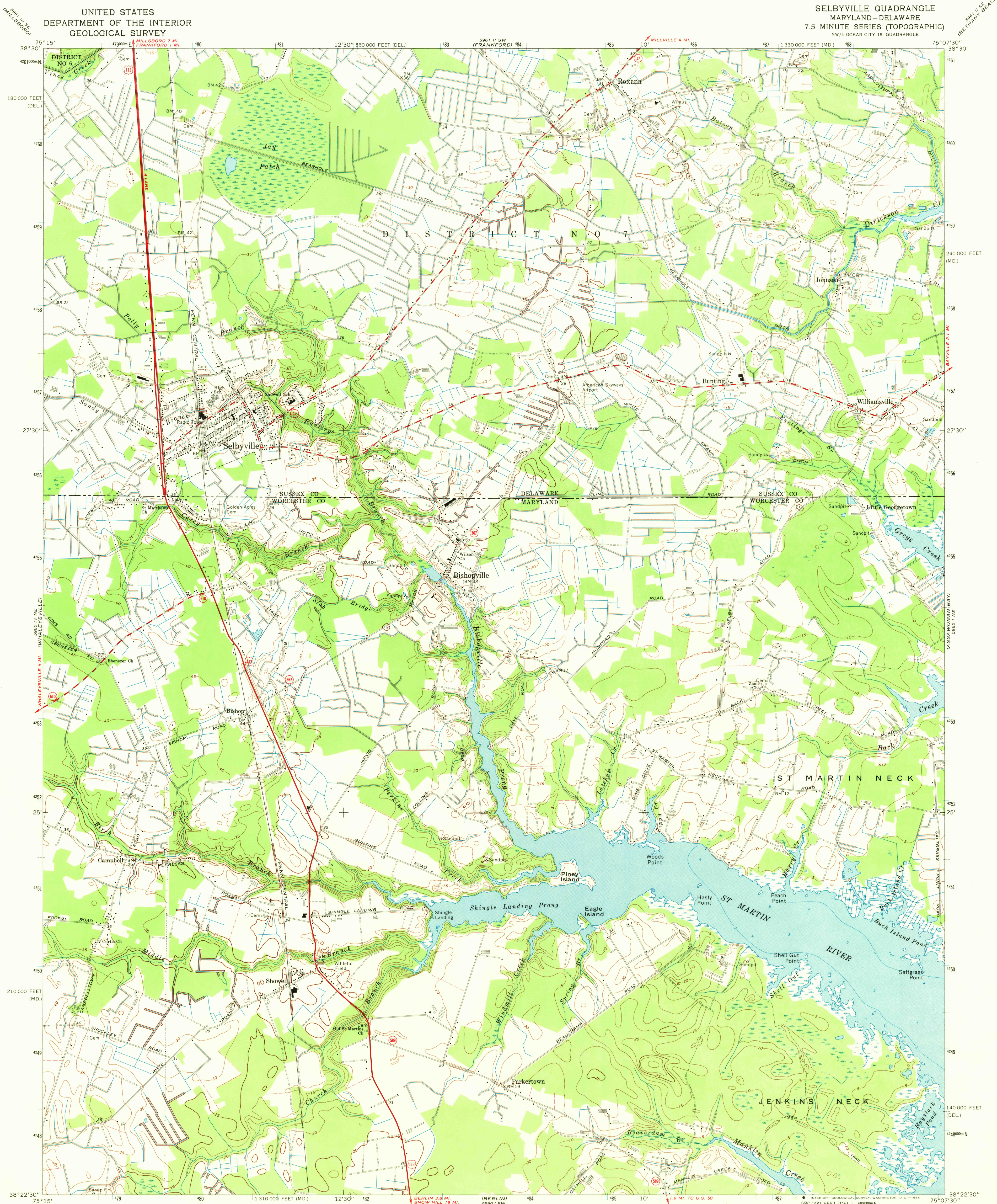


UNITED STATES
DEPARTMENT OF THE INTERIOR
GEOLOGICAL SURVEY

SELBYVILLE QUADRANGLE
MARYLAND-DELAWARE
7.5 MINUTE SERIES (TOPOGRAPHIC)
NW/4 OCEAN CITY 15' QUADRANGLE



Mapped, edited, and published by the Geological Survey
Control by USGS, USC&GS, and Maryland Bureau of Control Surveys
Topography by photogrammetric methods from aerial photographs
taken 1963. Field checked 1967
Supersedes Army Map Service map dated 1943
Selected hydrographic data compiled from USC&GS Chart 1220 (1966)
Polyconic projection. 1927 North American datum
10,000-foot grids based on Maryland coordinate system, and
Delaware coordinate system
1000-meter Universal Transverse Mercator grid ticks,
zone 18, shown in blue
Fine red-dashed lines indicate selected fence and field lines where
generally visible on aerial photographs. This information is unchecked

UTM GRID AND 1967 MAGNETIC NORTH
DECLINATION AT CENTER OF SHEET

SCALE 1:24,000
CONTOUR INTERVAL 5 FEET
DATUM IS MEAN SEA LEVEL
DEPTH CURVES AND SOUNDINGS IN FEET—DATUM IS MEAN LOW WATER
SHORELINE SHOWN REPRESENTS THE APPROXIMATE LINE OF MEAN HIGH WATER
THE MEAN RANGE OF TIDE IS LESS THAN 1 FOOT
THIS MAP COMPLIES WITH NATIONAL MAP ACCURACY STANDARDS
FOR SALE BY U.S. GEOLOGICAL SURVEY, WASHINGTON, D.C. 20242
A FOLDER DESCRIBING TOPOGRAPHIC MAPS AND SYMBOLS IS AVAILABLE ON REQUEST

USGS
Historical File
Topographic Division



U.S.G.S.
FILE COPY
TOPOGRAPHIC DIVISION

ROAD CLASSIFICATION
Primary highway, all weather, hard surface
Secondary highway, all weather, hard surface
Light-duty road, all weather, improved surface
Unimproved road, fair or dry weather
U.S. Route
State Route

SELBYVILLE, MD.—DEL.
NW/4 OCEAN CITY 15' QUADRANGLE
N3822.5—W7507.5/7.5

1967
AMS 5960 1 NW—SERIES V833

JUL 25 1969