

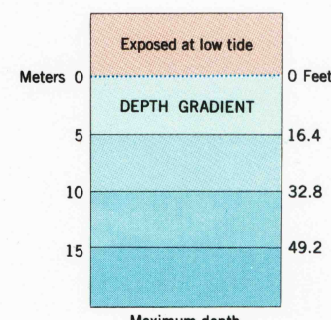


CONVERSION
SCALES

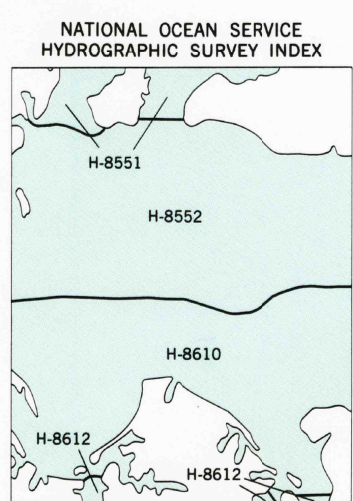


Feet	Meters
1	0.3048
2	0.6096
3	0.9144
4	1.2192
5	1.5240
6	1.8288
7	2.1336
8	2.4384
9	2.7432
10	3.0480

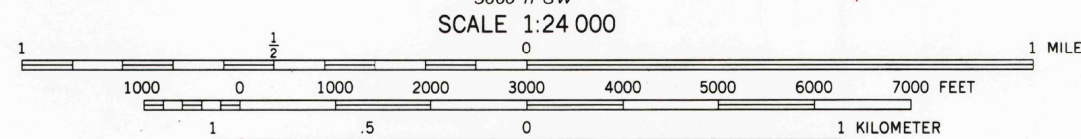
To convert feet to meters
multiply by 0.3048
To convert meters to feet
multiply by 3.2808



Mapped, edited, and published by the Geological Survey
and the National Ocean Service
Control by USGS and NOS/NOAA
Topography by photogrammetric methods from aerial photographs taken
1967. Field checked 1968.
Bathymetry compiled by the National Ocean Service from tide-coordinated
hydrographic surveys. This information is not intended for navigational
purposes.
Mean low water (dotted) line and mean high water (heavy solid) line
compiled by NOS from tide-coordinated aerial photographs. Apparent
shoreline (outer edge of vegetation) shown by light solid line.
Polyconic projection. 10,000-foot grid ticks based on Maryland
coordinate system and Virginia coordinate system, north zone
1000-meter Universal Transverse Mercator grid, zone 18
1927 North American Datum
To place on the predicted North American Datum 1983 move the
projection lines 9 meters south and 27 meters west as shown by
dashed corner ticks.
Revisions shown in purple and woodland compiled in cooperation with
Commonwealth of Virginia agencies from aerial photographs taken
1963 and other sources. This information not field checked.
Map edited 1983.

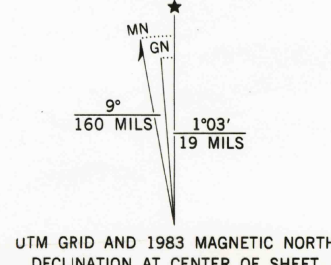
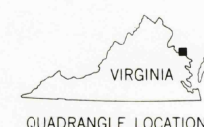


Survey Number	Survey Date	Survey Scale	Survey Line Spacing (Feet/Meters)
H-8551	1960	1:10,000	03-06
H-8552	1960	1:10,000	02-07
H-8610	1960-61	1:10,000	02-07
H-8612	1961	1:10,000	02-05



CONTOUR INTERVAL 10 FEET
DASHED LINES REPRESENT 5-FOOT CONTOURS
NATIONAL GEODETIC VERTICAL DATUM OF 1929
BATHYMETRIC CONTOUR INTERVAL 1 METER WITH SUPPLEMENTARY
0.5 METER CONTOURS-DATUM IS MEAN LOW WATER
THE RELATIONSHIP BETWEEN THE TWO DATUMS IS VARIABLE
THE MEAN RANGE OF TIDE IS APPROXIMATELY 0.5 METER

BASE MAP COMPLIES WITH NATIONAL MAP ACCURACY STANDARDS
BATHYMETRIC SURVEY DATA COMPLIES WITH INTERNATIONAL HYDROGRAPHIC
ORGANIZATION (IHO) SPECIAL PUBLICATION 44 ACCURACY STANDARDS
AND/OR STANDARDS USED AT THE DATE OF THE SURVEY
FOR SALE BY U. S. GEOLOGICAL SURVEY, RESTON, VIRGINIA 22092,
NATIONAL OCEAN SERVICE, ROCKVILLE, MARYLAND 20852,
AND VIRGINIA DIVISION OF MINERAL RESOURCES, CHARLOTTESVILLE, VIRGINIA 22903
A FOLDER DESCRIBING TOPOGRAPHIC MAPS AND SYMBOLS IS AVAILABLE ON REQUEST



ROAD CLASSIFICATION
Light-duty road, all weather, Unimproved road, fair or dry
improved surface weather
State Route

ST. CLEMENTS ISLAND, MD. - VA.
38076-B6-TB-024

1968
PHOTOREVISED 1983
BATHYMETRY ADDED 1982
DMA 5660 II NW-SERIES V833

