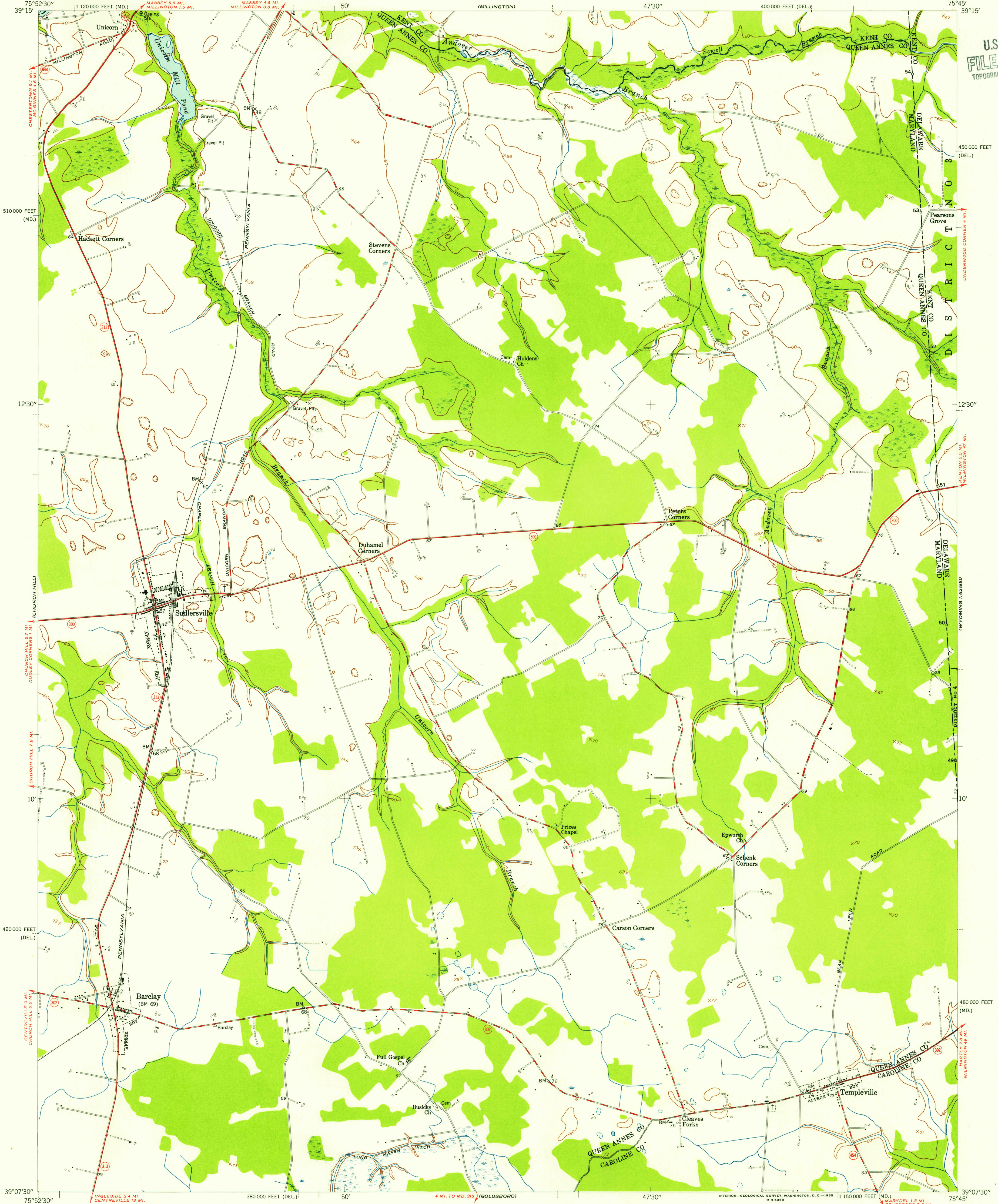


UNITED STATES
DEPARTMENT OF THE INTERIOR
GEOLOGICAL SURVEY

UNITED STATES
DEPARTMENT OF THE ARMY
CORPS OF ENGINEERS

SUDLERSVILLE QUADRANGLE
MARYLAND—DELAWARE
7.5 MINUTE SERIES (TOPOGRAPHIC)
NE/4 BARCLAY 15' QUADRANGLE



U.S.G.S.
FILE COPY
TOPOGRAPHIC DIVISION

450 000 FEET
(DEL.)

510 000 FEET
(MD.)

12°30'

12°30'

12°30'

12°30'

12°30'

12°30'

12°30'

12°30'

12°30'

12°30'

12°30'

12°30'

12°30'

12°30'

12°30'

12°30'

12°30'

12°30'

12°30'

12°30'

12°30'

12°30'

12°30'

12°30'

12°30'

12°30'

12°30'

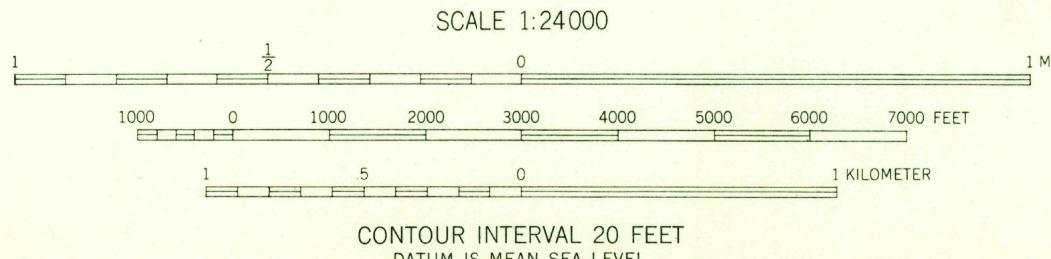
Mapped by the Army Map Service
Edited and published by the Geological Survey

Control by USGS and USC&GS

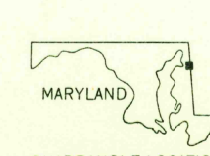
Topography from aerial photographs by stereophotogrammetric
methods. Aerial photographs taken 1942
Culture revised by the Geological Survey 1953

Polyconic projection. 1927 North American datum
10,000-foot grids based on Maryland and Delaware
coordinate systems

TRUE NORTH
MAGNETIC NORTH
APPROXIMATE MEAN
DECLINATION, 1953



USGS
Historical File
Topographic Division



ROAD CLASSIFICATION
Heavy-duty ——— Light-duty ———
Medium-duty ——— Unimproved dirt ———
U.S. Route ——— State Route ———

SUDLERSVILLE, MD.—DEL.
NE/4 BARCLAY 15' QUADRANGLE
N3907.5—W7545/7.5

1953

U.S.G.S.
FILE COPY
TOPOGRAPHIC DIVISION

APR 4 1955