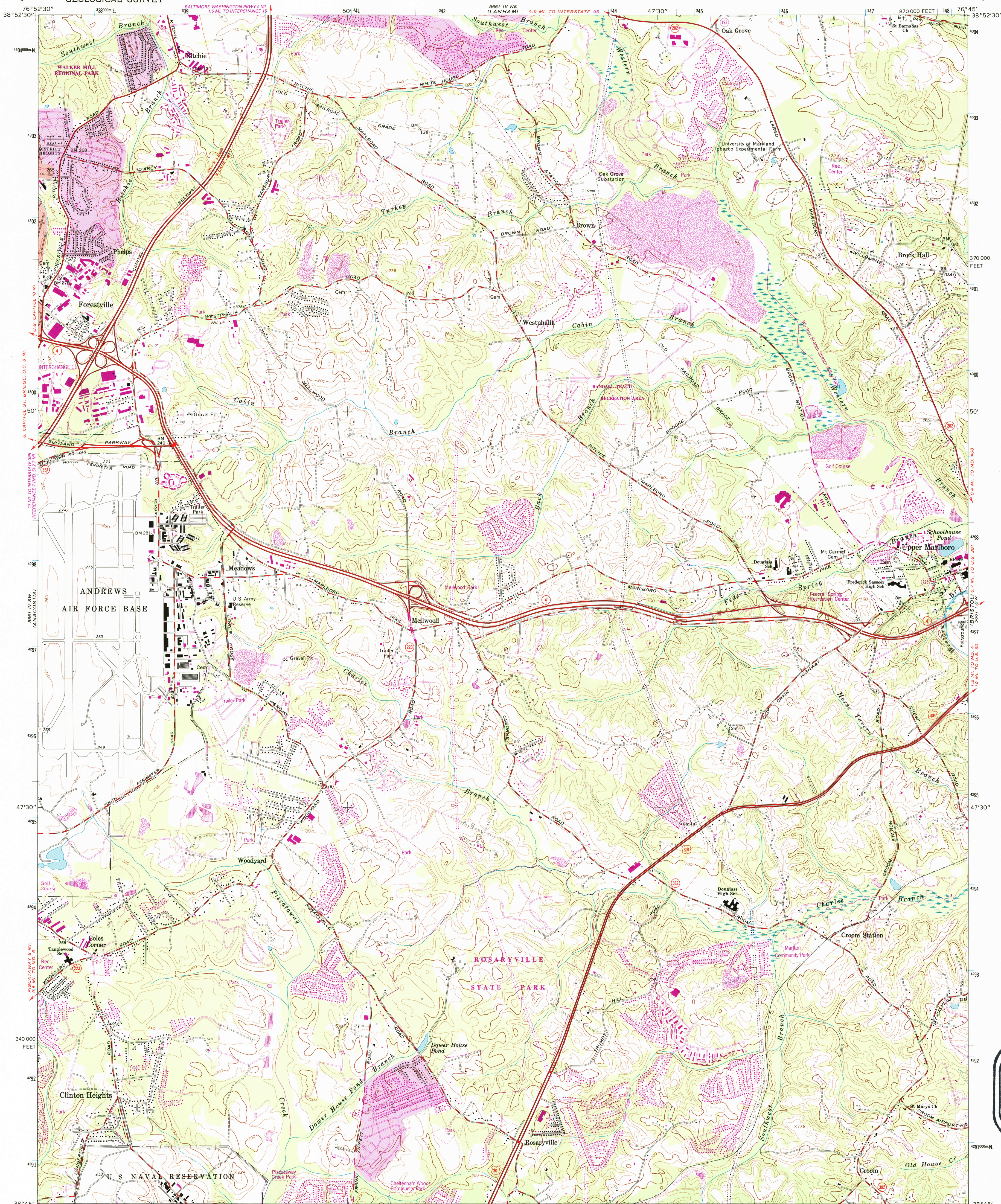
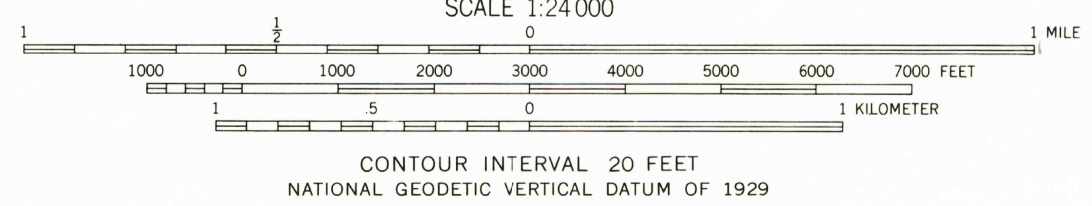
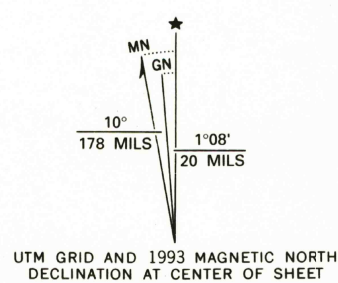


UNITED STATES
DEPARTMENT OF THE INTERIOR
GEOLOGICAL SURVEY

UPPER MARLBORO QUADRANGLE
MARYLAND-PRINCE GEORGES CO.
7.5 MINUTE SERIES (TOPOGRAPHIC)



Mapped by the Army Map Service
Revised by the United States Geological Survey
Control by USGS, NOS/NOAA, and WSSC
Planimetry by photogrammetric methods from aerial photographs
taken 1937-38 and 1943. Topography by planetable surveys 1944
Revised by the U.S. Geological Survey 1965
Projection and 10,000-foot grid ticks: Maryland coordinate
system, (Lambert conformal conic)
1000-meter Universal Transverse Mercator grid ticks, zone 18, shown in blue
1927 North American Datum (NAD 27)
North American Datum of 1983 (NAD 83) is shown by dashed corner ticks
The values of the shift between NAD 27 and NAD 83 for 7.5-minute
intersections are given in USGS Bulletin 1875
There may be private inholdings within the boundaries of
the National or State reservations shown on this map
Red tint indicates areas in which only landmark buildings are shown
Fine red dashed lines indicate selected fence and field lines where
generally visible on aerial photographs. This information is unchecked



ROAD CLASSIFICATION
Primary highway, hard surface ————— Light-duty road, hard or improved surface
Secondary highway, hard surface ————— Unimproved road
Interstate Route ——— U.S. Route ——— State Route

UPPER MARLBORO, MD.

38076-G7-TF-024

1965
REVISED 1993
DMA 5661 IV SE-SERIES V833

COMPLIES WITH U.S. GEOLOGICAL SURVEY STANDARDS FOR SPATIAL ACCURACY - CLASS 2
FOR SALE BY U.S. GEOLOGICAL SURVEY
DENVER, COLORADO 80225, OR RESTON, VIRGINIA 22092
A FOLDER DESCRIBING TOPOGRAPHIC MAPS AND SYMBOLS IS AVAILABLE ON REQUEST

Revisions shown in purple compiled by the U.S. Geological Survey
from aerial photographs taken 1988 and other sources
This information is not field checked. Map edited 1993
Information shown in purple may not meet USGS content
standards and may conflict with previously mapped contours
Purple tint indicates extension of urban areas

USGS AND HISTORICAL
MAP ARCHIVES
AUG 9 1994
REC'D FILE COPY