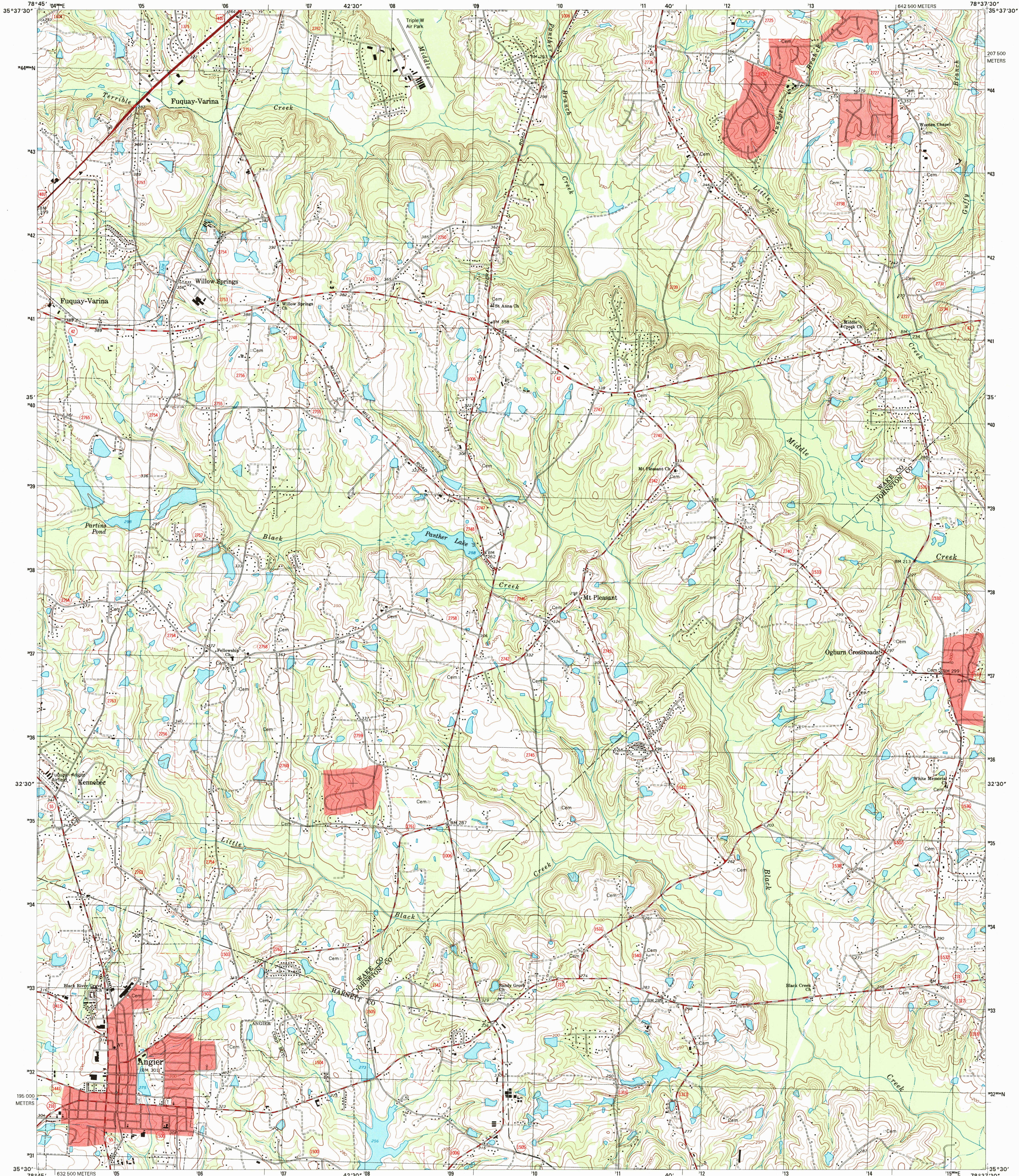




U.S. DEPARTMENT OF THE INTERIOR
U.S. GEOLOGICAL SURVEY

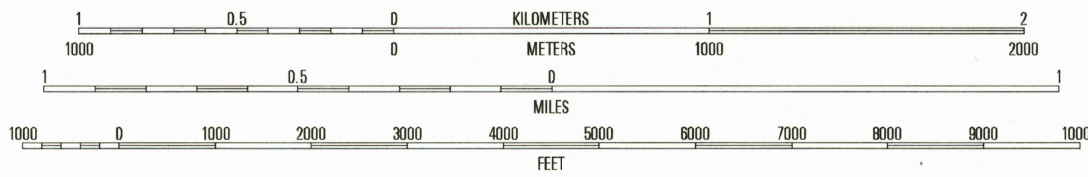
STATE OF NORTH CAROLINA
DEPARTMENT OF ENVIRONMENT AND NATURAL RESOURCES
DIVISION OF LAND RESOURCES
NORTH CAROLINA GEOLOGICAL SURVEY

ANGIER QUADRANGLE
NORTH CAROLINA
7.5-MINUTE SERIES (TOPOGRAPHIC)



Produced by the United States Geological Survey
in cooperation with North Carolina Department
of Environment and Natural Resources
Topography compiled 1962. Planimetry derived from imagery
taken 1993 and other sources. Survey control current as of 1964
North American Datum of 1983 (NAD 83). Projection and
1 000-meter grid: Universal Transverse Mercator, zone 17
2 500-meter ticks: North Carolina Coordinate System of 1983
North American Datum of 1927 (NAD 27) is shown by dashed
corner ticks. The values of the shift between NAD 83 and
NAD 27 for 7.5-minute intersections are obtainable from
National Geodetic Survey NADCON software
Landmark buildings verified 1964

UTM GRID AND 1998 MAGNETIC NORTH
DECLINATION AT CENTER OF SHEET



CONTOUR INTERVAL 10 FEET
NATIONAL GEODETIC VERTICAL DATUM OF 1929
TO CONVERT FROM FEET TO METERS, MULTIPLY BY 0.3048

THIS MAP COMPLIES WITH NATIONAL MAP ACCURACY STANDARDS
FOR SALE BY U.S. GEOLOGICAL SURVEY, P.O. BOX 25286, DENVER, COLORADO 80225
A FOLDER DESCRIBING TOPOGRAPHIC MAPS AND SYMBOLS IS AVAILABLE ON REQUEST



1	2	3	1 Agate
4	5	6	2 Lake Wheeler
7	8	9	3 Garner
			4 Fuquay-Varina
			5 Edmondson
			6 Lillington
			7 Coats
			8 Benson

ROAD CLASSIFICATION
Primary highway Light-duty road, hard or
hard surface improved surface
Secondary highway Unimproved road
Interstate Route U.S. Route State Route

RECEIVED
APR 30 1999
USGS NMD
HISTORICAL MAP ARCHIVES
NIMA 5255 II SW-SERIES V842

