

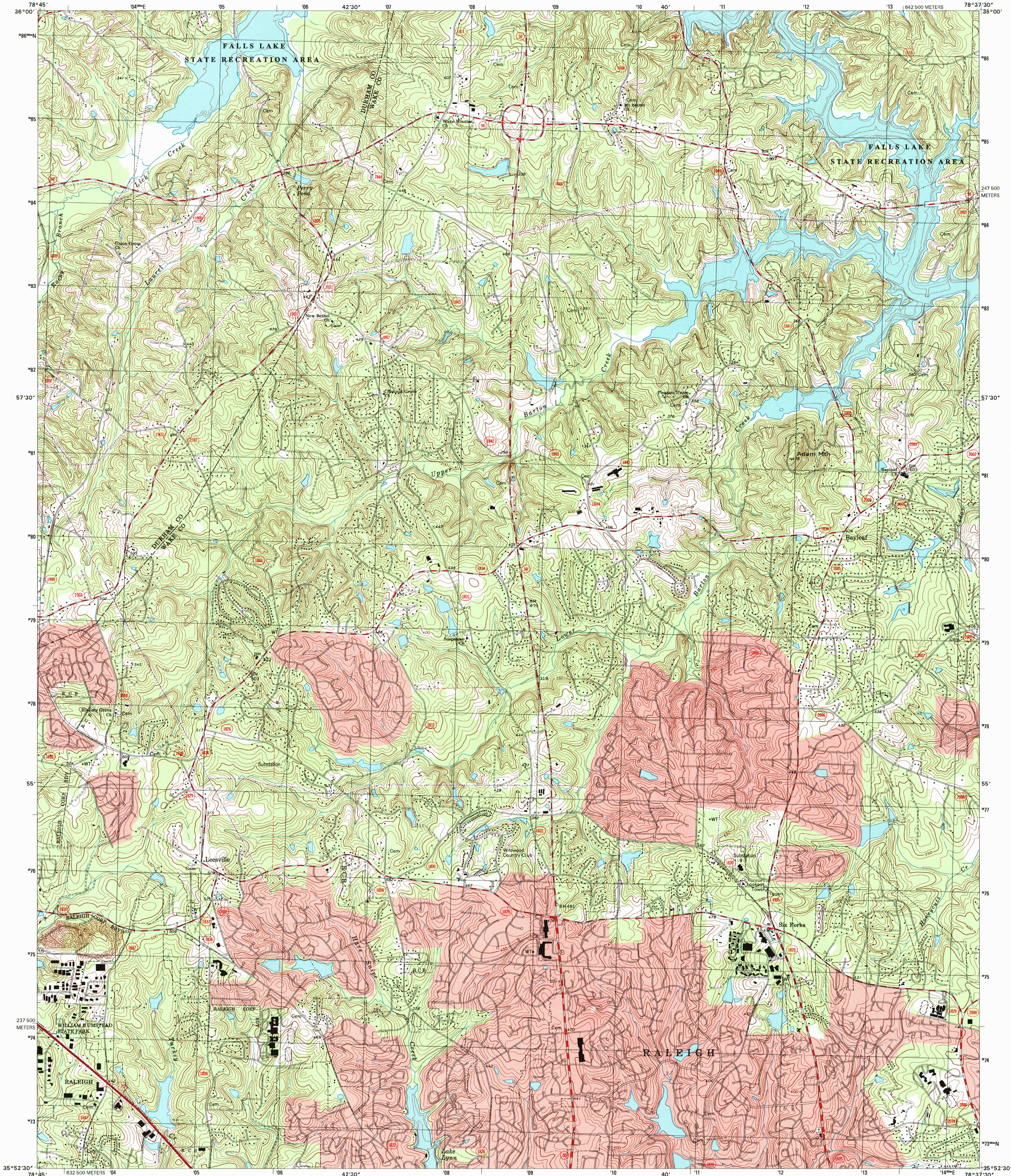


U.S. DEPARTMENT OF THE INTERIOR
U.S. GEOLOGICAL SURVEY



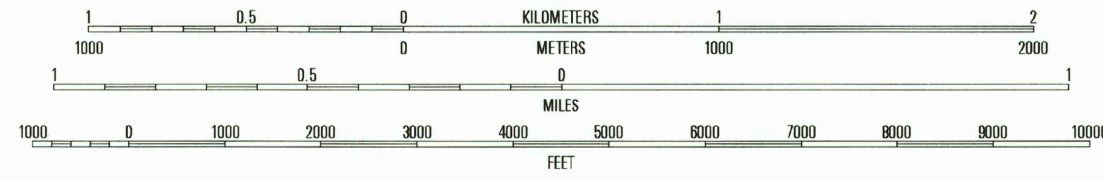
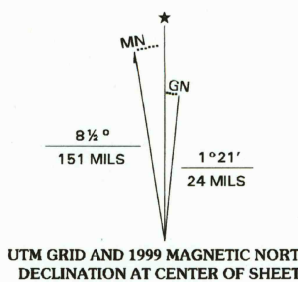
STATE OF NORTH CAROLINA
DEPARTMENT OF ENVIRONMENT AND NATURAL RESOURCES
DIVISION OF LAND RESOURCES
NORTH CAROLINA GEOLOGICAL SURVEY

BAYLEAF QUADRANGLE
NORTH CAROLINA
7.5-MINUTE SERIES (TOPOGRAPHIC)



Produced by the United States Geological Survey
in cooperation with the North Carolina Department
of Environment and Natural Resources

Topography compiled 1965. Planimetry derived from imagery
taken 1993 and other sources. Survey control current as of 1967
North American Datum of 1983 (NAD 83). Projection and
1 000-meter grid: Universal Transverse Mercator, zone 17.
2 500-meter ticks: North Carolina Coordinate System of 1983
North American Datum of 1927 (NAD 27) is shown by dashed
corner ticks. The values of the shift between NAD 83 and
NAD 27 for 7.5-minute intersections are obtainable from
National Geodetic Survey NADCON software.
There may be private inholdings within the boundaries of the
National or State reservations shown on this map.
Landmark buildings verified 1967.



CONTOUR INTERVAL 10 FEET
NATIONAL GEODETIC VERTICAL DATUM OF 1929
TO CONVERT FROM FEET TO METERS, MULTIPLY BY 0.3048



QUADRANGLE LOCATION

ROAD CLASSIFICATION
Primary highway
hard surface
Secondary highway
hard surface
Light-duty road, hard or
improved surface
Unimproved road
Interstate Route
U.S. Route
State Route

RECEIVED

MAY 3 1 1999

1	2	3
4	5	6
7	8	9

USGS NMD
HISTORICAL MAP ARCHIVES

BAYLEAF, NC

1993

NIMA 5255 1 NW-SERIES V842

THIS MAP COMPLIES WITH NATIONAL MAP ACCURACY STANDARDS
FOR SALE BY U.S. GEOLOGICAL SURVEY, P.O. BOX 25286, DENVER, COLORADO 80225
A FOLDER DESCRIBING TOPOGRAPHIC MAPS AND SYMBOLS IS AVAILABLE ON REQUEST

