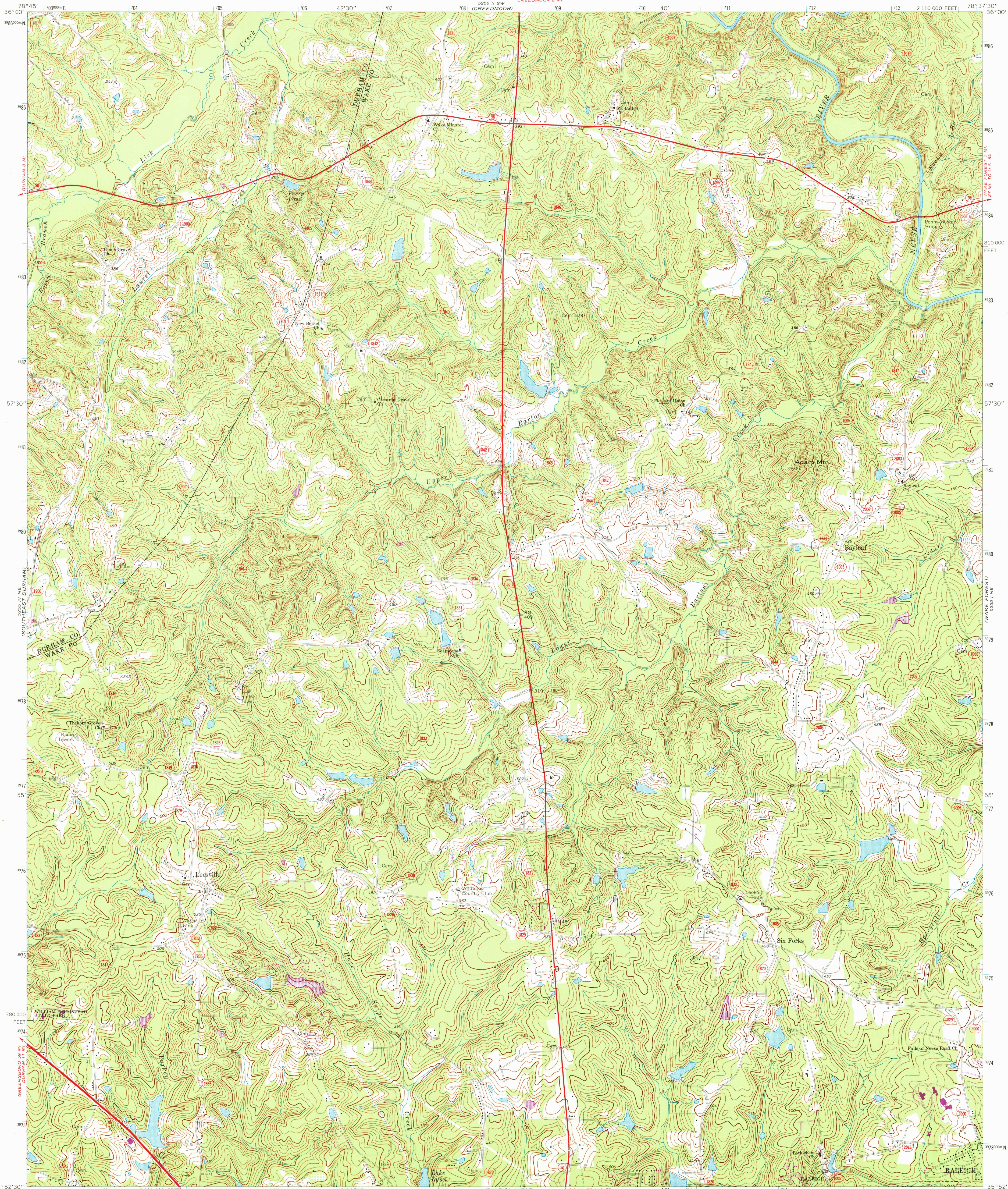
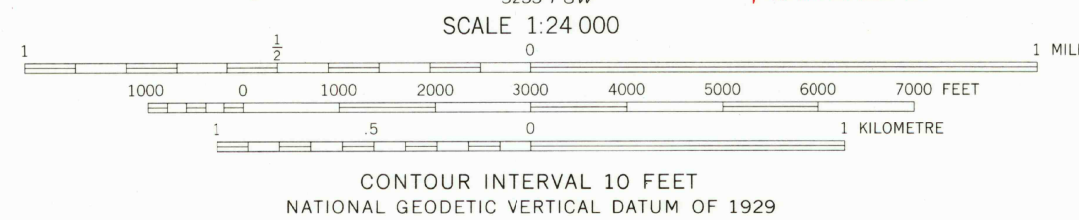
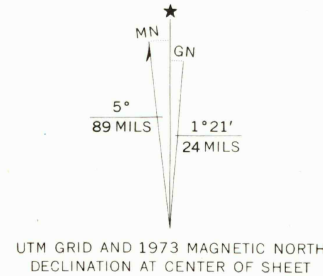


UNITED STATES
DEPARTMENT OF THE INTERIOR
GEOLOGICAL SURVEY

BAYLEAF QUADRANGLE
NORTH CAROLINA
7.5 MINUTE SERIES (TOPOGRAPHIC)
NW/4 RALEIGH 15' QUADRANGLE



Mapped, edited, and published by the Geological Survey
Control by USGS, USC&GS, and North Carolina Geodetic Survey
Topography by photogrammetric methods from aerial photographs
taken 1965. Field checked 1967.
Polyconic projection. 1927 North American datum
10,000-foot grid based on North Carolina coordinate system
1000-metre Universal Transverse Mercator grid ticks,
zone 17, shown in blue.
Fine red dashed lines indicate selected fence and field lines where
generally visible on aerial photographs. This information is unchecked.
Revisions shown in purple compiled from aerial
photographs taken 1973. This information not
field checked.



THIS MAP COMPLIES WITH NATIONAL MAP ACCURACY STANDARDS
FOR SALE BY U. S. GEOLOGICAL SURVEY, RESTON, VIRGINIA 22092
A FOLDER DESCRIBING TOPOGRAPHIC MAPS AND SYMBOLS IS AVAILABLE ON REQUEST



ROAD CLASSIFICATION
Primary highway, hard surface —————
Secondary highway, hard surface —————
Unimproved road —————
Interstate Route ————
U. S. Route ————
State Route ————
USGS
Historical File
Topographic Division
BAYLEAF, N. C.
NW/4 RALEIGH 15' QUADRANGLE
N3552.5—W7837.5/7.5
1967
PHOTOREVISED 1973
AMS 5255 1 NW—SERIES V842

MAR 11 1976