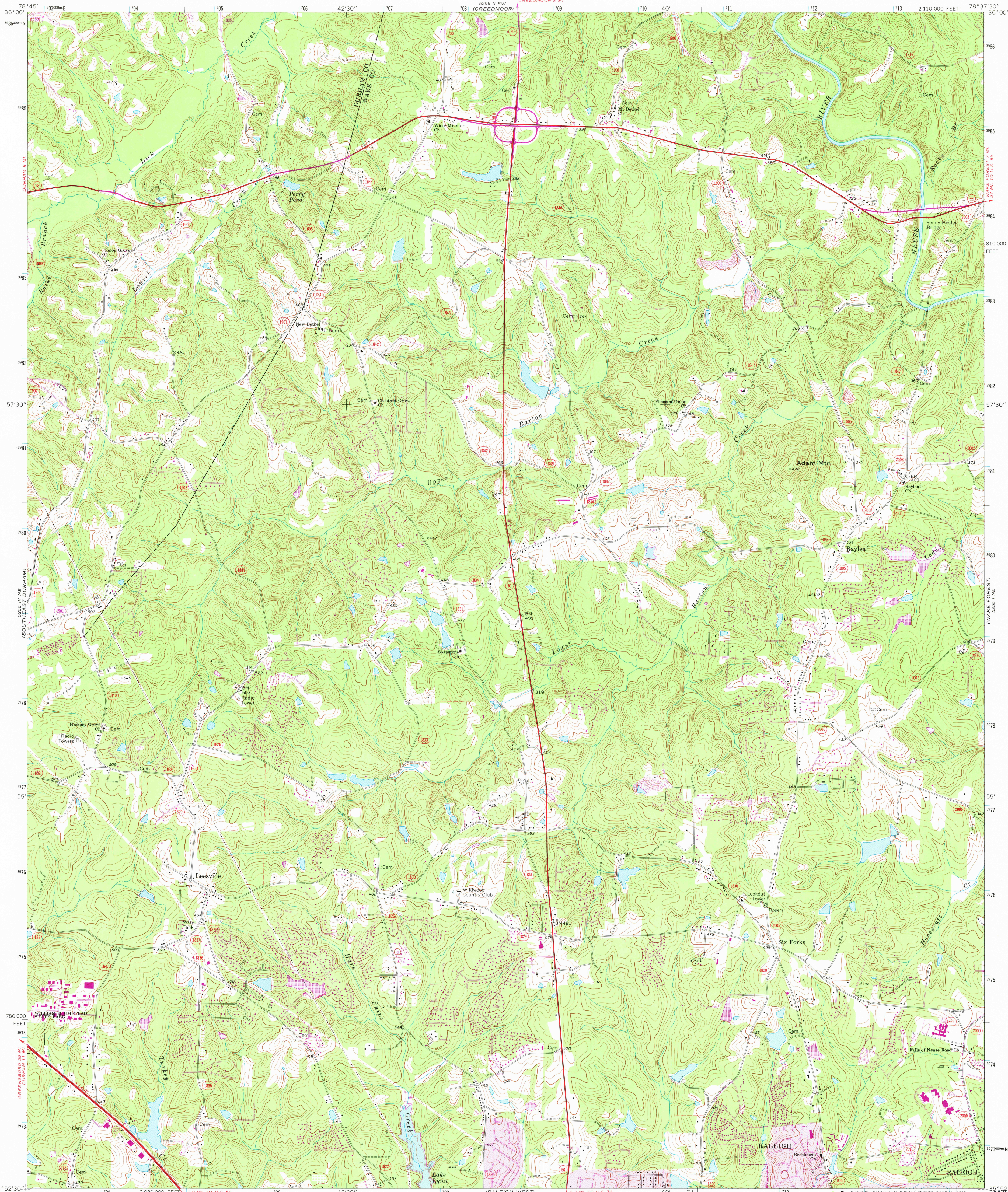


UNITED STATES  
DEPARTMENT OF THE INTERIOR  
GEOLOGICAL SURVEY

BAYLEAF QUADRANGLE  
NORTH CAROLINA  
7.5 MINUTE SERIES (TOPOGRAPHIC)  
NW/4 RALEIGH 15' QUADRANGLE  
2 110 000 FEET



Mapped, edited, and published by the Geological Survey  
Control by USGS, NOS/NOAA, and North Carolina Geodetic Survey  
Topography by photogrammetric methods from aerial photographs  
taken 1965. Field checked 1967  
Polyconic projection. 10,000-foot grid ticks based on North Carolina  
coordinate system. 1000-meter Universal Transverse Mercator grid  
ticks, zone 17, shown in blue. 1927 North American Datum  
To place on the predicted North American Datum 1983 move  
the projection lines 12 meters south and 23 meters west  
as shown by dashed corner ticks  
Fine red dashed lines indicate selected fence and field lines where  
generally visible on aerial photographs. This information is unchecked  
There may be private inholdings within the boundaries of  
the State or National reservations shown on this map  
Purple tint indicates extension of urban area

Revisions shown in purple and woodland compiled in  
cooperation with State of North Carolina agencies from  
aerial photographs taken 1980 and other sources. This  
information not field checked. Map edited 1981

THIS MAP COMPLIES WITH NATIONAL MAP ACCURACY STANDARDS  
FOR SALE BY U.S. GEOLOGICAL SURVEY, RESTON, VIRGINIA 22092  
A FOLDER DESCRIBING TOPOGRAPHIC MAPS AND SYMBOLS IS AVAILABLE ON REQUEST

ROAD CLASSIFICATION  
Primary highway, hard surface  
Secondary highway, hard surface  
Unimproved road  
Interstate Route  
U.S. Route  
State Route

BAYLEAF, N. C.  
NW/4 RALEIGH 15' QUADRANGLE  
N3552.5-W7837.5/7.5  
1967  
PHOTOREVISED 1981  
DMA 5255 I NW-SERIES V842

RETURN TO:  
USGS NMD HISTORICAL MAP ARCHIVES

MAR 25 1982  
RALEIGH EAST