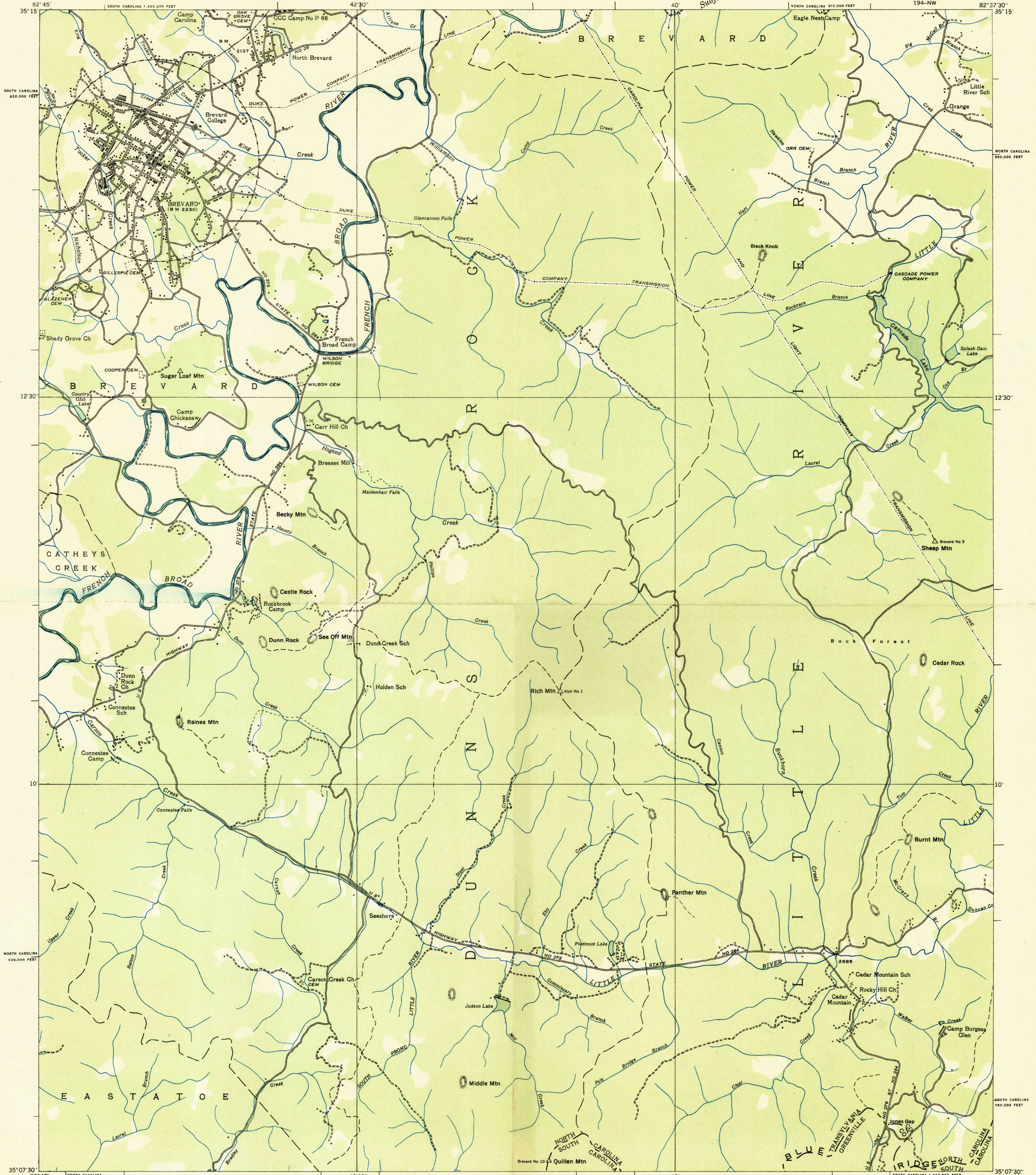
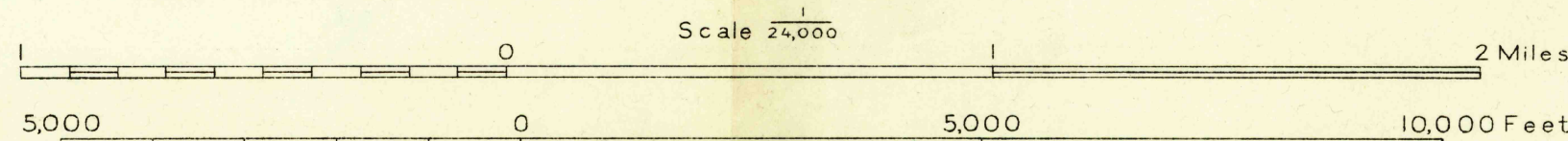


Advance sheet
Subject to correction



Albert Pike, Division Engineer
Compiled by U. S. Geological Survey from aerial photographs
Control by U. S. Geological Survey and U. S. Coast and Geodetic Survey
Field examination in 1935



Datum is mean sea level

TRUE NORTH
MAGNETIC NORTH
APPROXIMATE MEAN
DECLINATION, 1935

Polyconic projection. 1927 North American datum
10,000 foot grid based on North Carolina and
South Carolina (North) rectangular coordinate
systems

Ridge line ———
Trail - - - - -

BREVARD, N. C.-S. C.
194-NW

U.S.G.S.
FINE COPY
TOPOGRAPHIC DIVISION

USGS
Historical File
Topographic Division