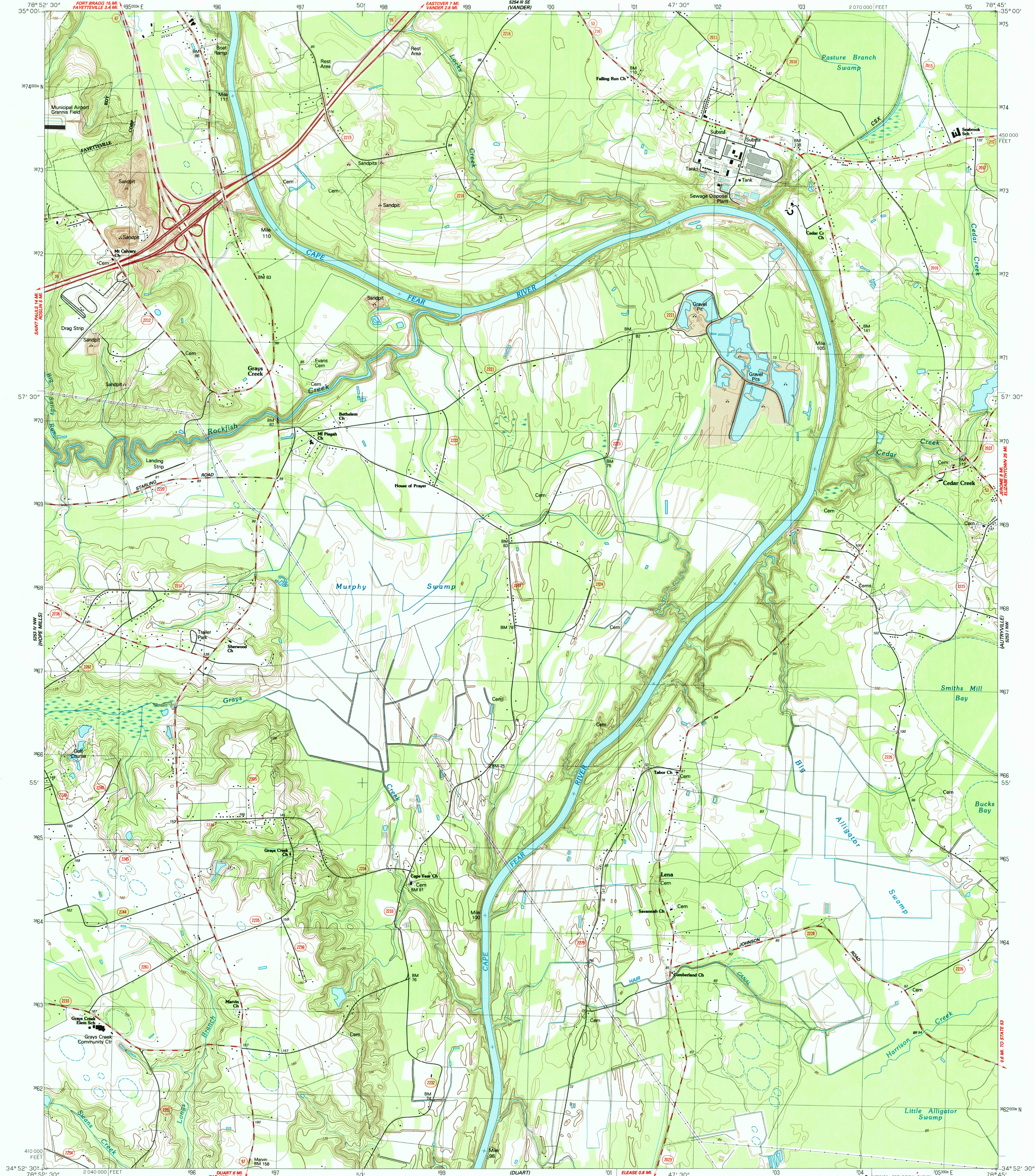


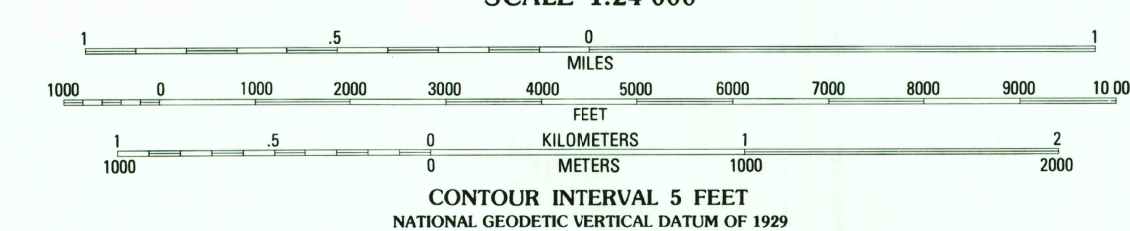
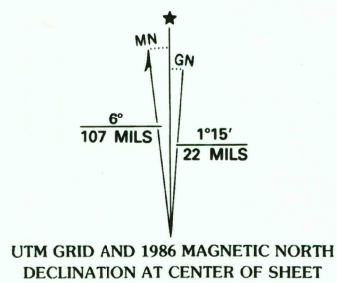
UNITED STATES
DEPARTMENT OF THE INTERIOR
GEOLOGICAL SURVEY

STATE OF NORTH CAROLINA
DEPARTMENT OF NATURAL RESOURCES
AND COMMUNITY DEVELOPMENT
RALEIGH, N. C.

CEDAR CREEK QUADRANGLE
NORTH CAROLINA-CUMBERLAND CO.
7.5 MINUTE SERIES (TOPOGRAPHIC)
NE 4 SAINT PAULS 15' QUADRANGLE



Produced by the United States Geological Survey
in cooperation with North Carolina Department of
Natural Resources and Community Development
Control by USGS, NOS/NOAA, and North Carolina Geodetic Survey
Topography by photogrammetric methods from aerial photographs
taken 1979-80. Field checked 1981. Map edited 1986
Projection and 10,000-foot grid ticks: North Carolina coordinate
system, (Lambert conformal conic)
1000-meter Universal Transverse Mercator grid, zone 17
1927 North American Datum
To place on the predicted North American Datum 1983,
move the projection lines 12 meters south and
23 meters west as shown by dashed corner ticks
Short dashed blue lines indicate elliptical bay outlines
visible on aerial photographs



THIS MAP COMPLIES WITH NATIONAL MAP ACCURACY STANDARDS
FOR SALE BY U. S. GEOLOGICAL SURVEY, DENVER, COLORADO 80225, OR RESTON, VIRGINIA 22092
A FOLDER DESCRIBING TOPOGRAPHIC MAPS AND SYMBOLS IS AVAILABLE ON REQUEST



ROAD CLASSIFICATION

Primary highway, light-duty road, hard or hard surface	Light-duty road, hard or improved surface
Secondary highway, hard surface	Unimproved road
Interstate Route	U. S. Route
	State Route

USGS NMD HISTORICAL MAP
SEP 28 1997
REC'D FILE COPY

CEDAR CREEK, N. C.
NE 4 SAINT PAULS 15' QUADRANGLE
34078-117-TF-024
1986
DMA 5253 IV NE-SERIES V842