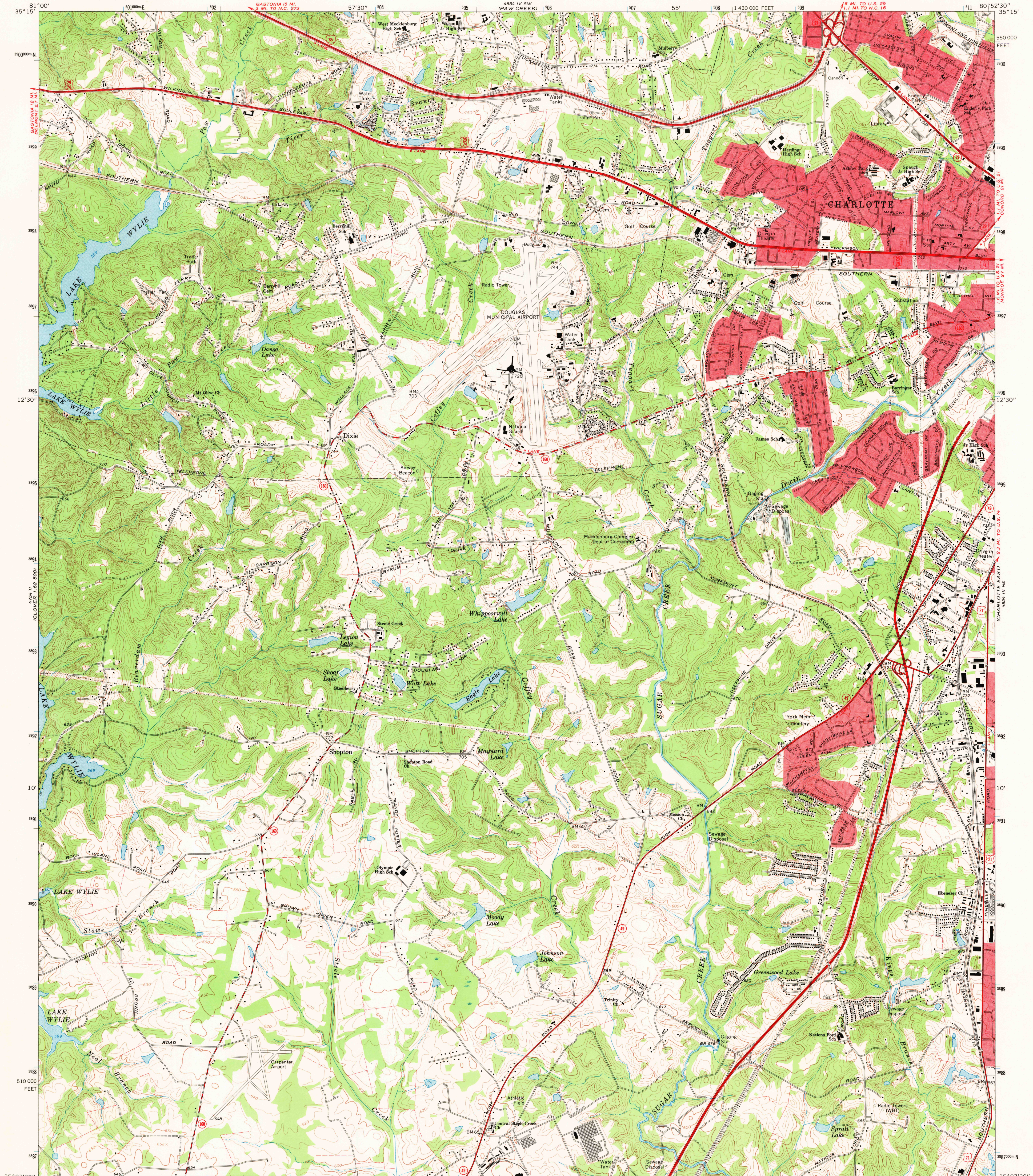
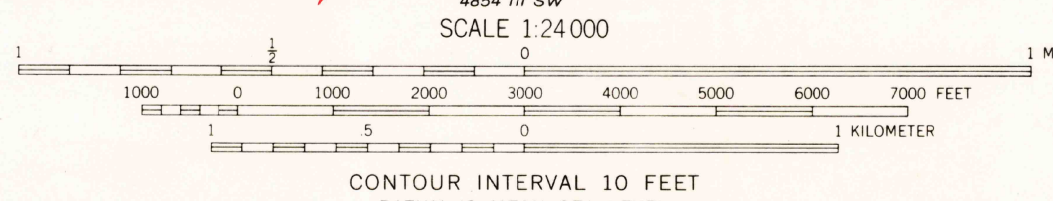
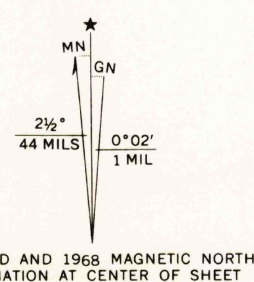


UNITED STATES  
DEPARTMENT OF THE INTERIOR  
GEOLOGICAL SURVEY

CHARLOTTE WEST QUADRANGLE  
NORTH CAROLINA—MECKLENBURG CO.  
7.5 MINUTE SERIES (TOPOGRAPHIC)  
NW/4 CHARLOTTE 15' QUADRANGLE

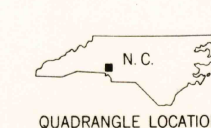


Mapped, edited, and published by the Geological Survey  
Control by USGS, USC&GS, and North Carolina Geodetic Survey  
Topography by photogrammetric methods from aerial photographs  
taken 1965. Field checked 1968  
Supersedes planimetric map dated 1948  
Polyconic projection. 1927 North American datum  
10,000-foot grid based on North Carolina coordinate system  
1000-meter Universal Transverse Mercator grid ticks,  
zone 17, shown in blue  
Fine red dashed lines indicate selected fence and field lines where  
generally visible on aerial photographs. This information is unchecked  
Red tint indicates areas in which only landmark buildings are shown



USGS  
Historical File  
Topographic Division

ROAD CLASSIFICATION  
Primary highway, all weather, hard surface  
Secondary highway, all weather, hard surface  
Light-duty road, all weather, improved surface  
Unimproved road, fair or dry weather  
Interstate Route  
U. S. Route  
State Route



U.S.G.S. HISTORICAL  
FILE COPY  
TOPOGRAPHIC DIVISION

CHARLOTTE WEST, N.C.  
NW/4 CHARLOTTE 15' QUADRANGLE  
N3507.5—W8052.5/7.5  
1968  
AMS 4854 III NW—SERIES V842

AUG 18 1970