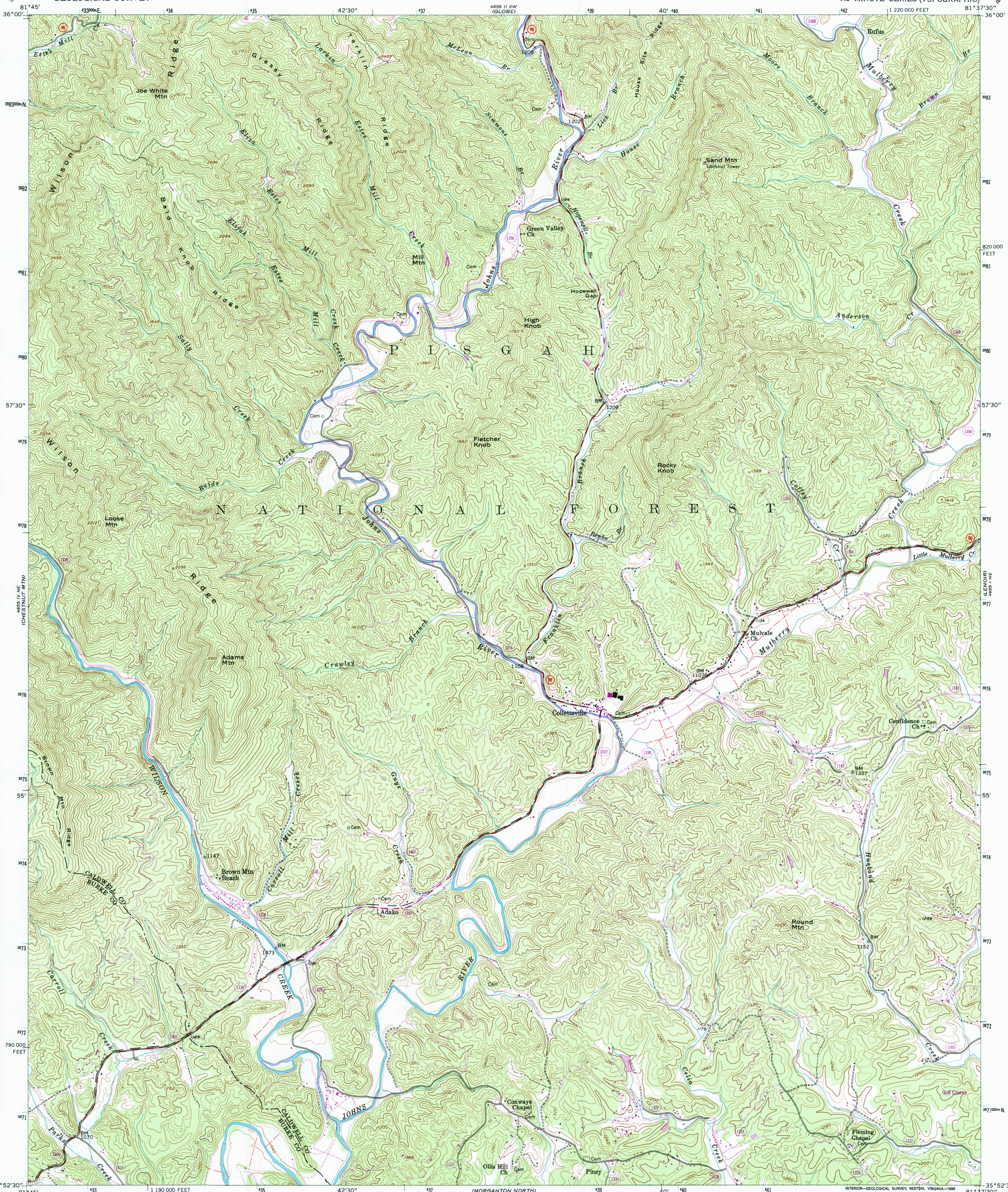
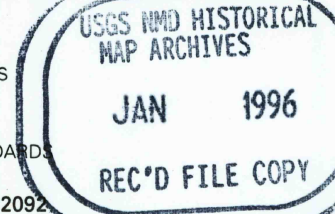
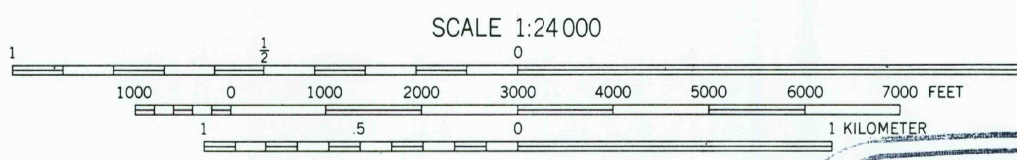
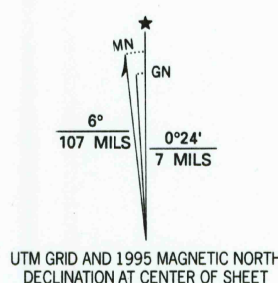


UNITED STATES
DEPARTMENT OF THE INTERIOR
GEOLOGICAL SURVEY

COLLETTSVILLE QUADRANGLE
NORTH CAROLINA
7.5 MINUTE SERIES (TOPOGRAPHIC)



Produced by the United States Geological Survey
Compiled by photogrammetric methods from imagery dated 1947
Field checked 1956
North American Datum of 1927 (NAD 27). Projection and
10 000-foot ticks: North Carolina coordinate system
(Lambert conformal conic)
Blue 1000-meter Universal Transverse Mercator ticks, zone 17
North American Datum of 1983 (NAD 83) is shown by dashed
corner ticks. The values of the shift between NAD 27 and NAD 83
for 7.5-minute intersections are obtainable from National Geodetic
Survey NADCON software
There may be private inholdings within the boundaries of
the National or State reservations shown on this map



ROAD CLASSIFICATION	
Primary highway, hard surface	Light-duty road, hard or improved surface
Secondary highway, hard surface	Unimproved road
Interstate Route	U. S. Route
	State Route

COLLETTSVILLE, N. C.
35081-H6-TF-024

1993

DMA 4651 1 NW-SERIES V842

