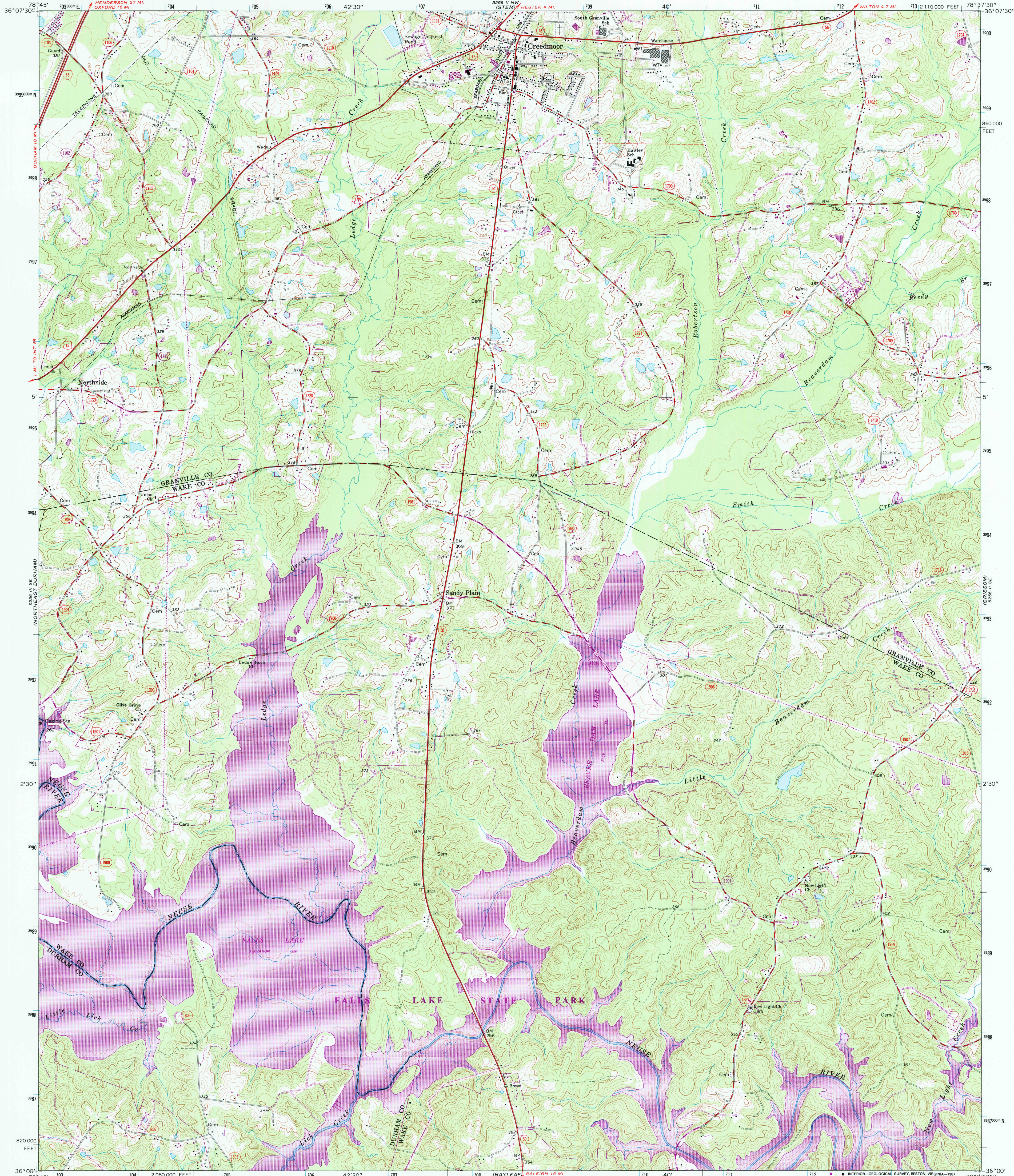


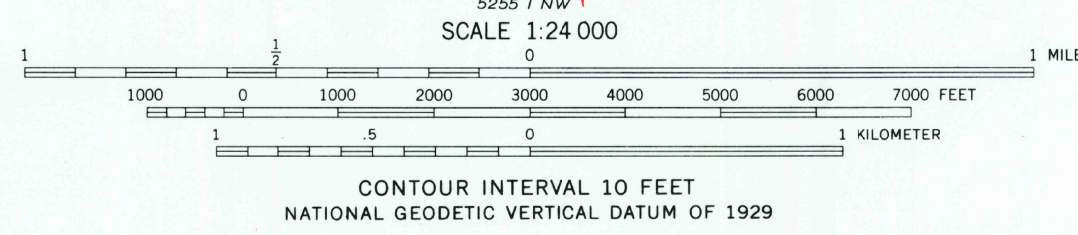
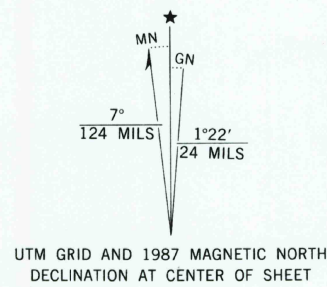
UNITED STATES
DEPARTMENT OF THE INTERIOR
GEOLOGICAL SURVEY

STATE OF NORTH CAROLINA
DEPARTMENT OF NATURAL AND ECONOMIC RESOURCES
RALEIGH, NORTH CAROLINA

CREEDMOOR QUADRANGLE
NORTH CAROLINA
7.5 MINUTE SERIES (TOPOGRAPHIC)
SW 1/4 CREEDMOOR 15' QUADRANGLE



Maped, edited, and published by the Geological Survey
Control by USGS, NOS/NOAA, USCE, and North Carolina Geodetic Survey
Topography by photogrammetric methods from aerial photographs
taken 1974. Field checked 1974
Projection and 10,000-foot grid ticks: North Carolina coordinate
system (Lambert conformal conic). 1000-meter Universal
Transverse Mercator grid ticks, zone 17, shown in blue. 1927
North American Datum. To place on the predicted North
American Datum 1983 move the projection lines 12 meters south
and 23 meters west as shown by dashed corner ticks
Fine red dashed lines indicate selected fence and field lines where
generally visible on aerial photographs. This information is unchecked
Revisions shown in purple and woodland compiled in cooperation
with North Carolina agencies from aerial photographs taken
1984 and other sources. This information not field checked
Map edited 1987



ROAD CLASSIFICATION
Primary highway, hard surface
Secondary highway, hard surface
Unimproved road
Interstate Route
U. S. Route
State Route
Light-duty road, hard or improved surface
Unimproved road
Interstate Route
U. S. Route
State Route

CREEDMOOR, N. C.
SW 1/4 CREEDMOOR 15' QUADRANGLE
36078-A6-TF-024

1974
PHOTOREVISED 1987
DMA 5256 II SW - SERIES V842

THIS MAP COMPLIES WITH NATIONAL MAP ACCURACY STANDARDS
FOR SALE BY U. S. GEOLOGICAL SURVEY, DENVER, COLORADO 80225 OR RESTON, VIRGINIA 22092
A FOLDER DESCRIBING TOPOGRAPHIC MAPS AND SYMBOLS IS AVAILABLE ON REQUEST

RETURN TO:
USGS AND HISTORICAL MAP ARCHIVES