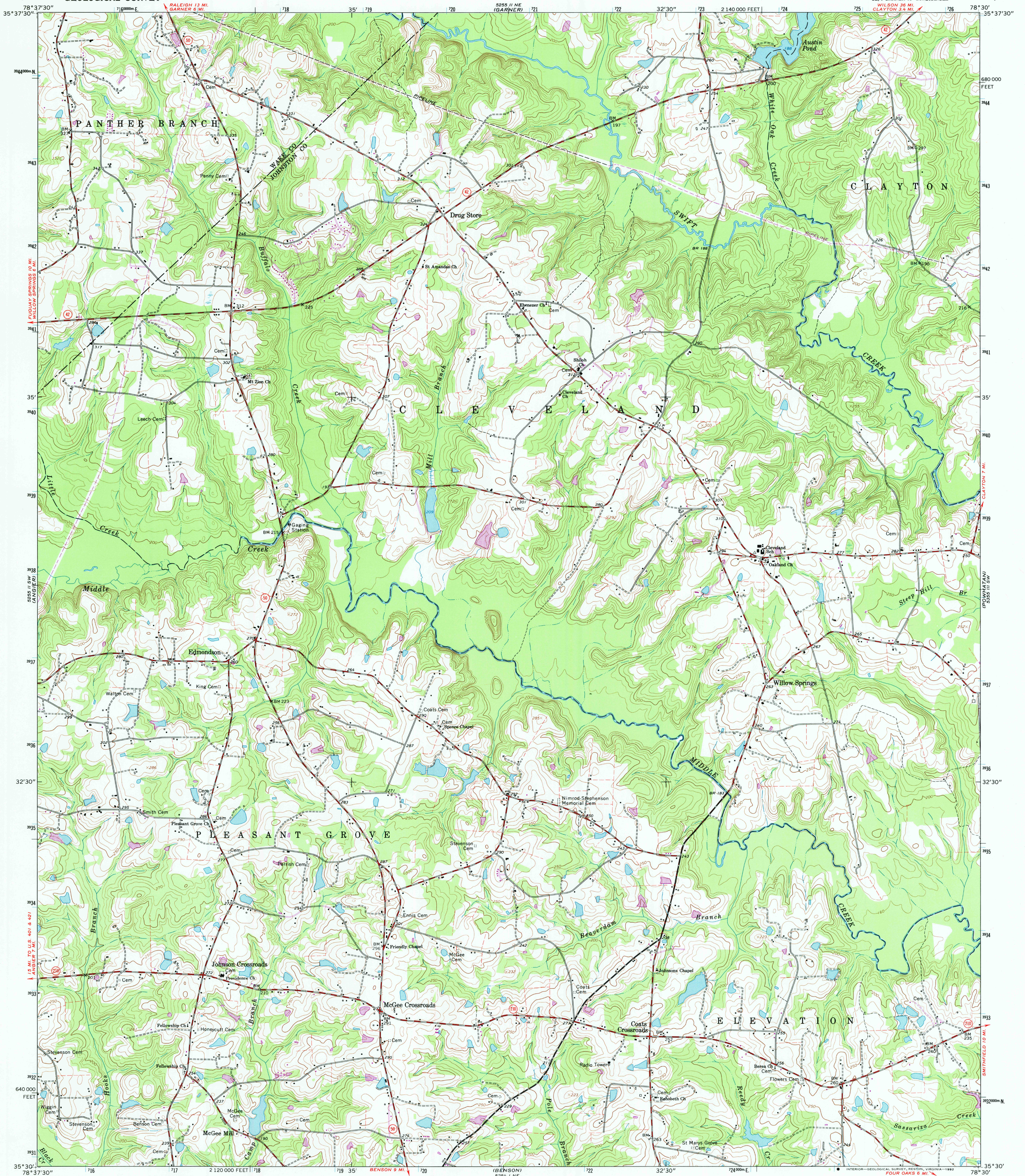


UNITED STATES  
DEPARTMENT OF THE INTERIOR  
GEOLOGICAL SURVEY

EDMONDSON QUADRANGLE  
NORTH CAROLINA  
7.5 MINUTE SERIES (TOPOGRAPHIC)  
SE/4 GARNER 15' QUADRANGLE



Mapped, edited, and published by the Geological Survey  
Control by USGS, USC&GS, and USCE  
Topography by photogrammetric methods from aerial  
photographs taken 1962. Field checked 1964  
Polyconic projection. 1927 North American datum  
10,000-foot grid based on North Carolina coordinate system  
1000-metre Universal Transverse Mercator grid ticks,  
zone 17, shown in blue  
Fine red dashed lines indicate selected fence and field lines where  
generally visible on aerial photographs. This information is unchecked  
Revisions shown in purple compiled from aerial  
photographs taken 1973. This information not  
field checked

Map photoinspected 1988  
No major culture or drainage changes observed

THIS MAP COMPLIES WITH NATIONAL MAP ACCURACY STANDARDS  
FOR SALE BY U.S. GEOLOGICAL SURVEY  
DENVER, COLORADO 80225, OR RESTON, VIRGINIA 22092  
A FOLDER DESCRIBING TOPOGRAPHIC MAPS AND SYMBOLS IS AVAILABLE ON REQUEST

U.S. GEOLOGICAL SURVEY  
JUL 17 1992  
REC'D FILE COPY



ROAD CLASSIFICATION  
Medium-duty ——— Light-duty ———  
Unimproved dirt ———  
State Route

EDMONDSON, N. C.  
SE/4 GARNER 15' QUADRANGLE  
35078E5-TF-024  
PHOTOINSPECTED 1988  
1964  
PHOTOREVISED 1973  
DMA 5255 II SE—SERIES V842