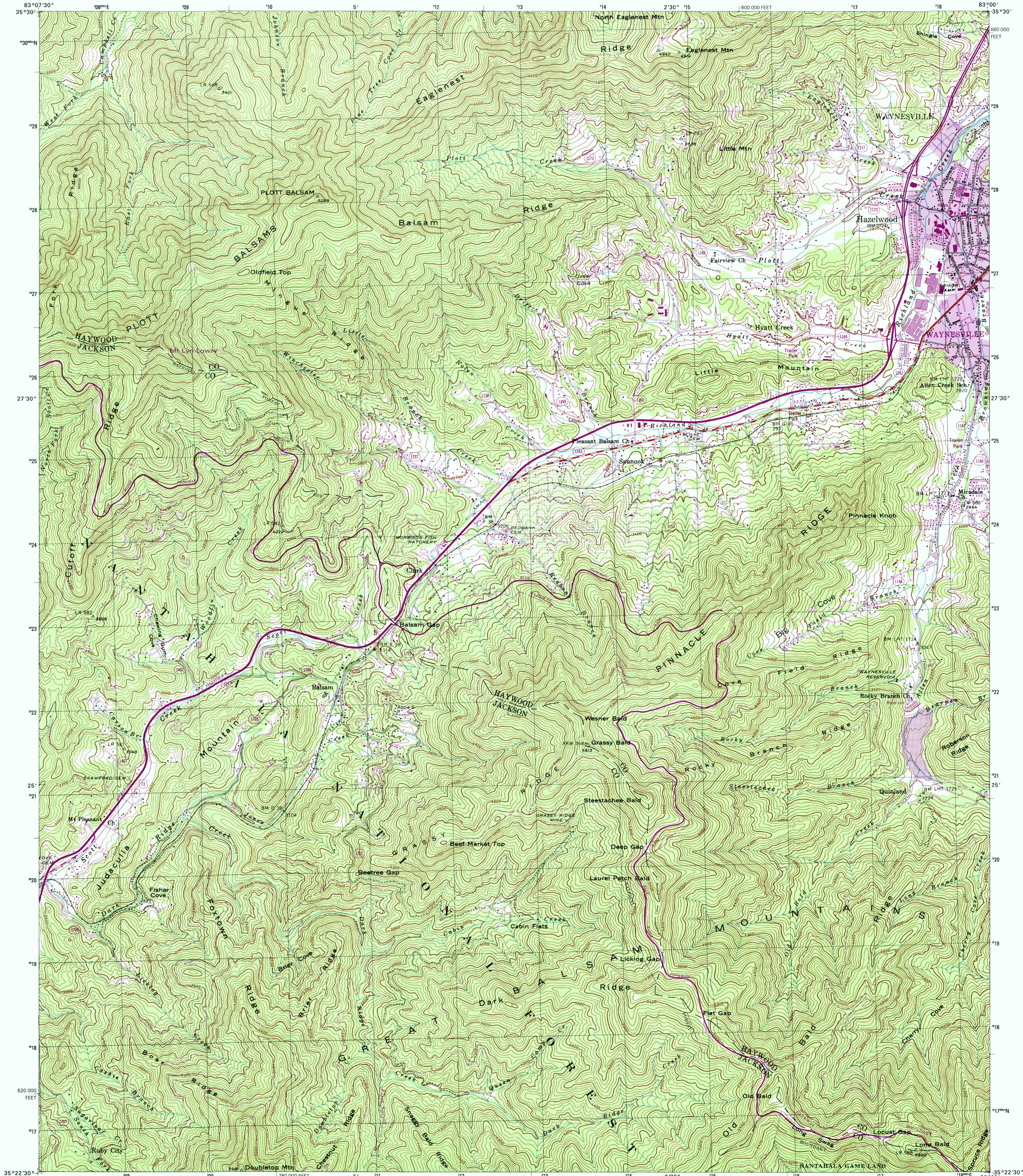


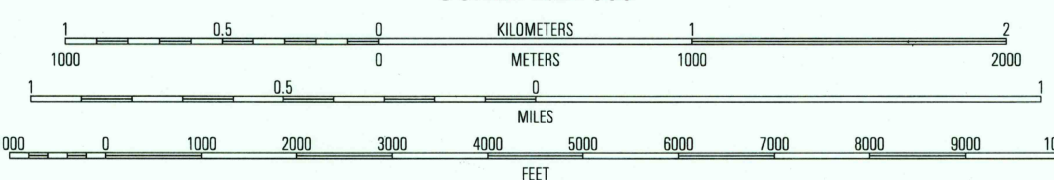
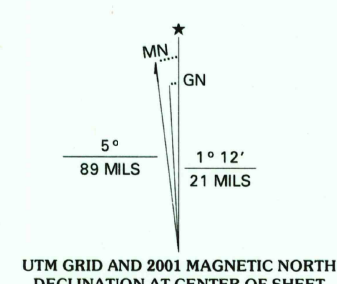


U.S. DEPARTMENT OF THE INTERIOR  
U.S. GEOLOGICAL SURVEY

HAZELWOOD QUADRANGLE  
NORTH CAROLINA  
7.5-MINUTE SERIES (TOPOGRAPHIC) 175-NE



Produced by the United States Geological Survey  
Supplemental control by Tennessee Valley Authority  
Topography compiled 1941. Field checked by TVA 1941  
Planimetry derived in cooperation with State of North Carolina  
agencies from imagery taken 1987 and other sources  
Photoinspected using imagery taken 1997; no major culture or  
drainage changes observed. Survey control current as of 1941  
Boundaries, other than corporate, revised 2001  
North American Datum of 1927 (NAD 27). Projection and  
10 000-foot ticks: North Carolina coordinate system  
(Lambert conformal conic)  
1000-meter Universal Transverse Mercator grid, zone 17  
North American Datum of 1983 (NAD 83) is shown by dashed  
corner ticks. The values of the shift between NAD 27 and NAD 83  
for 7.5-minute intersections are obtainable from National Geodetic  
Survey NADCON software  
There may be private inholdings within the boundaries of  
the National or State reservations shown on this map  
Information shown in purple may not meet USGS content standards  
and may conflict with previously mapped contours



CONTOUR INTERVAL 40 FEET  
NATIONAL GEODETIC VERTICAL DATUM OF 1929  
TO CONVERT FROM FEET TO METERS, MULTIPLY BY 0.3048

THIS MAP COMPLIES WITH NATIONAL MAP ACCURACY STANDARDS  
FOR SALE BY U.S. GEOLOGICAL SURVEY, P.O. BOX 25286, DENVER, COLORADO 80225  
A FOLDER DESCRIBING TOPOGRAPHIC MAPS AND SYMBOLS IS AVAILABLE ON REQUEST

RECEIVED  
AUG 31 2001

HISTORICAL MAP ARCHIVES



QUADRANGLE LOCATION

1	2	3
4	5	6
7	8	

ADJOINING 7.5 QUADRANGLE NAMES

ROAD CLASSIFICATION (TVA 175-NE)  
Primary highway hard surface .....  
Secondary highway hard surface .....  
Unimproved road .....  
Light-duty road, hard or improved surface .....  
Interstate Route .....  
U.S. Route .....  
State Route .....

HAZELWOOD, NC  
1997

NIMA 4354 1 NE-SERIES V842

