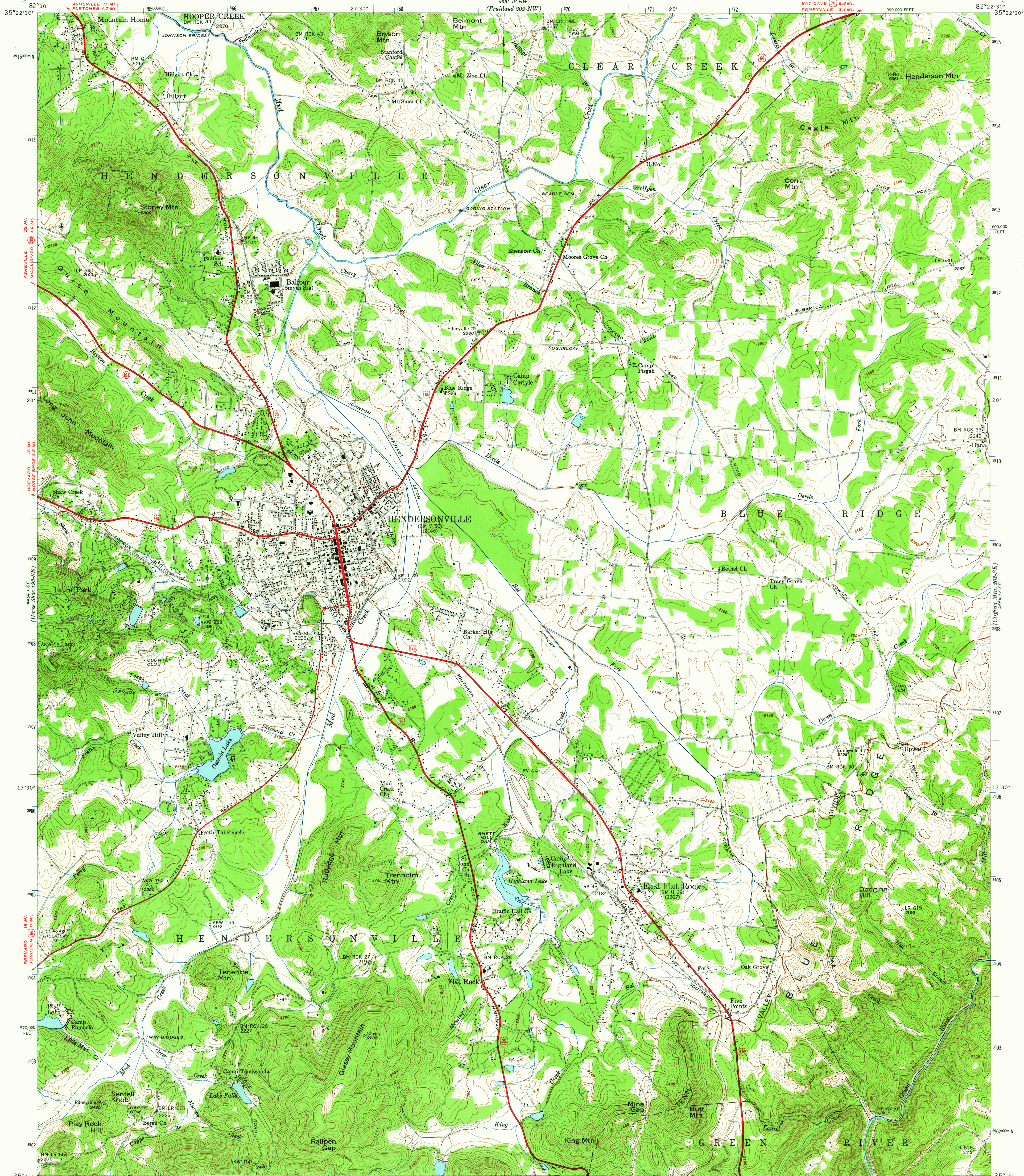


UNITED STATES
DEPARTMENT OF THE INTERIOR
GEOLOGICAL SURVEY

UNITED STATES
TENNESSEE VALLEY AUTHORITY
MAPS AND SURVEYS DIVISION

NORTH CAROLINA
(HENDERSON COUNTY)
HENDERSONVILLE QUADRANGLE
202-SW



Control by USC&GS, USGS, and TVA
Topography by the Geological Survey from aerial
photographs by stereophotogrammetric methods
Field examination by Tennessee Valley Authority, 1946
1000-meter Universal Transverse Mercator grid ticks,
zone 17, shown in blue

UTM GRID AND 1946 MAGNETIC NORTH
DECLINATION AT CENTER OF SHEET

SCALE 1:24,000
0 1000 2000 3000 4000 5000 6000 7000 FEET
0 1 2 3 4 5 6 KILOMETER
Contour interval 20 feet
Datum is mean sea level

USGS
Historical File
Topographic Division

HENDERSONVILLE, N. C.
202-SW

N3515-W8222.5/7.5
1946
AMS 4554 IV SW-SERIES V842

FOR SALE BY U.S. GEOLOGICAL SURVEY, WASHINGTON, D. C. 20242.
U. S. TENNESSEE VALLEY AUTHORITY, CHATTANOOGA OR KNOXVILLE, TENN.,
A FOLDER DESCRIBING TOPOGRAPHIC MAPS AND SYMBOLS IS AVAILABLE ON REQUEST

ROUTES USUALLY TRAVELED
HARD, IMPERVIOUS SURFACES
OTHER SURFACE IMPROVEMENTS
U. S. ROUTE
STATE ROUTE

2110
HISTORICAL
U.S.G.S.
FILE COPY
TOPOGRAPHIC DIVISION