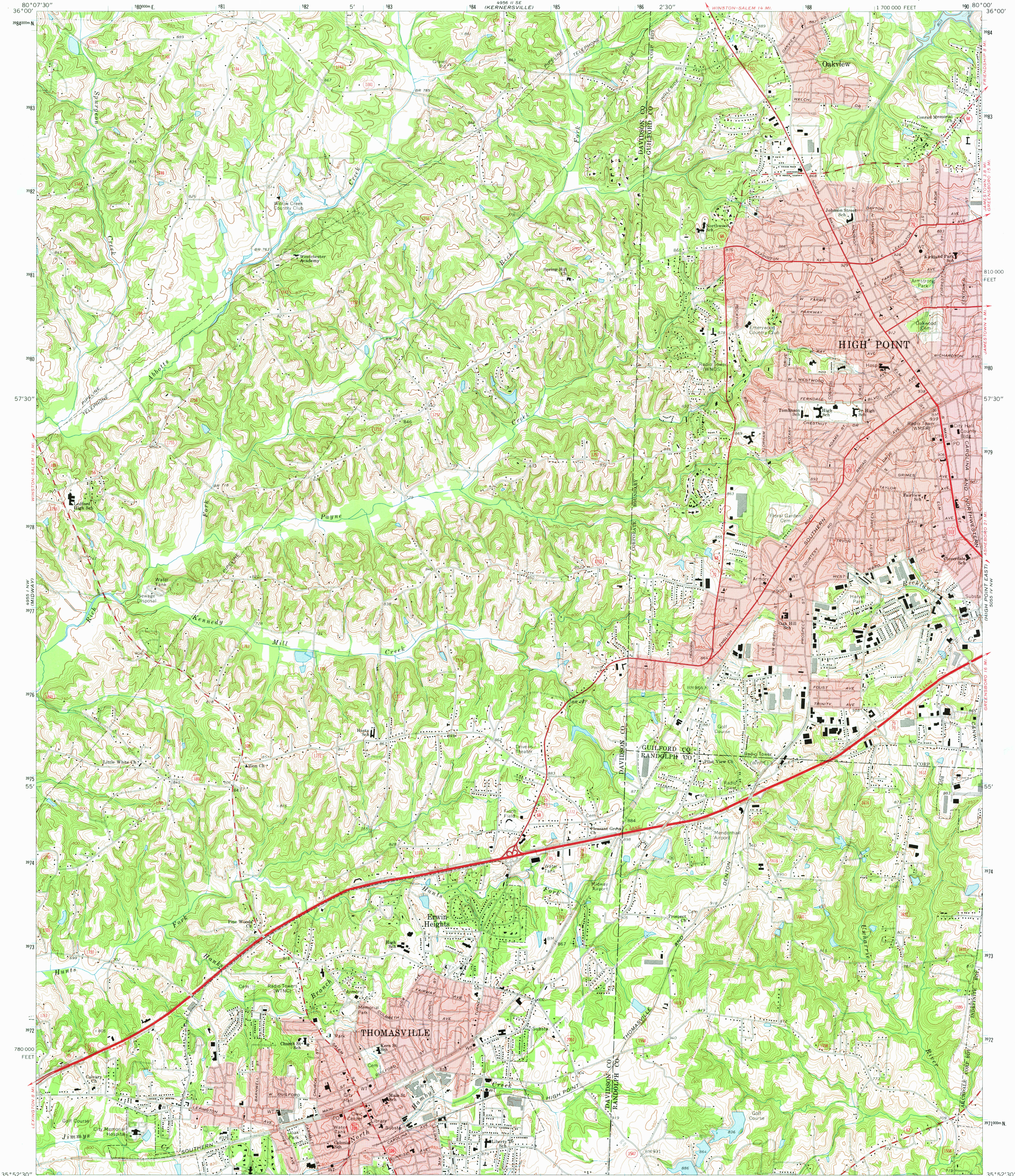
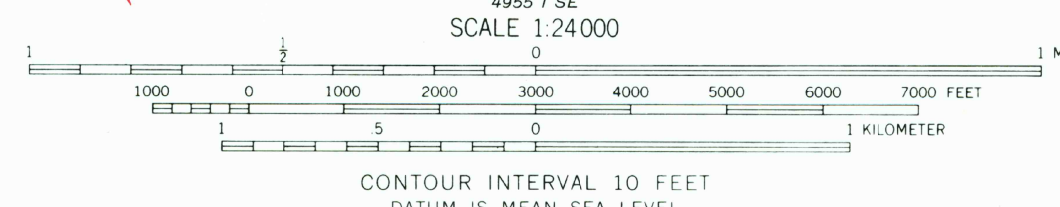
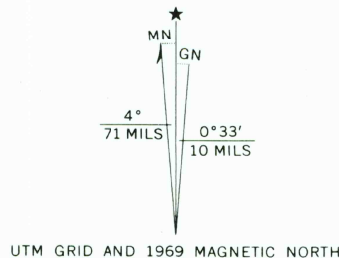


UNITED STATES
DEPARTMENT OF THE INTERIOR
GEOLOGICAL SURVEY

HIGH POINT WEST QUADRANGLE
NORTH CAROLINA
7.5 MINUTE SERIES (TOPOGRAPHIC)



Mapped, edited, and published by the Geological Survey
Control by USGS, USC&GS, and North Carolina Geodetic Survey
Topography by photogrammetric methods from aerial photographs
taken 1965. Field checked 1969
Supersedes map dated 1949
Polyconic projection. 1927 North American datum
10,000-foot grid based on North Carolina coordinate system
1000-meter Universal Transverse Mercator grid ticks, zone 17,
shown in blue
Red tint indicates areas in which only landmark buildings are shown



ROAD CLASSIFICATION
Primary highway, hard surface
Secondary highway, hard surface
Interstate Route
U. S. Route
State Route
Light-duty road, hard or improved surface
Unimproved road

NOT 19 1973
HIGH POINT WEST, N. C.
N3552.5—W8000/7.5

1969

AMS 4955 I NE—SERIES V842

THIS MAP COMPLIES WITH NATIONAL MAP ACCURACY STANDARDS
FOR SALE BY U. S. GEOLOGICAL SURVEY, WASHINGTON, D. C. 20242
A FOLDER DESCRIBING TOPOGRAPHIC MAPS AND SYMBOLS IS AVAILABLE ON REQUEST

3355
50/1/10