



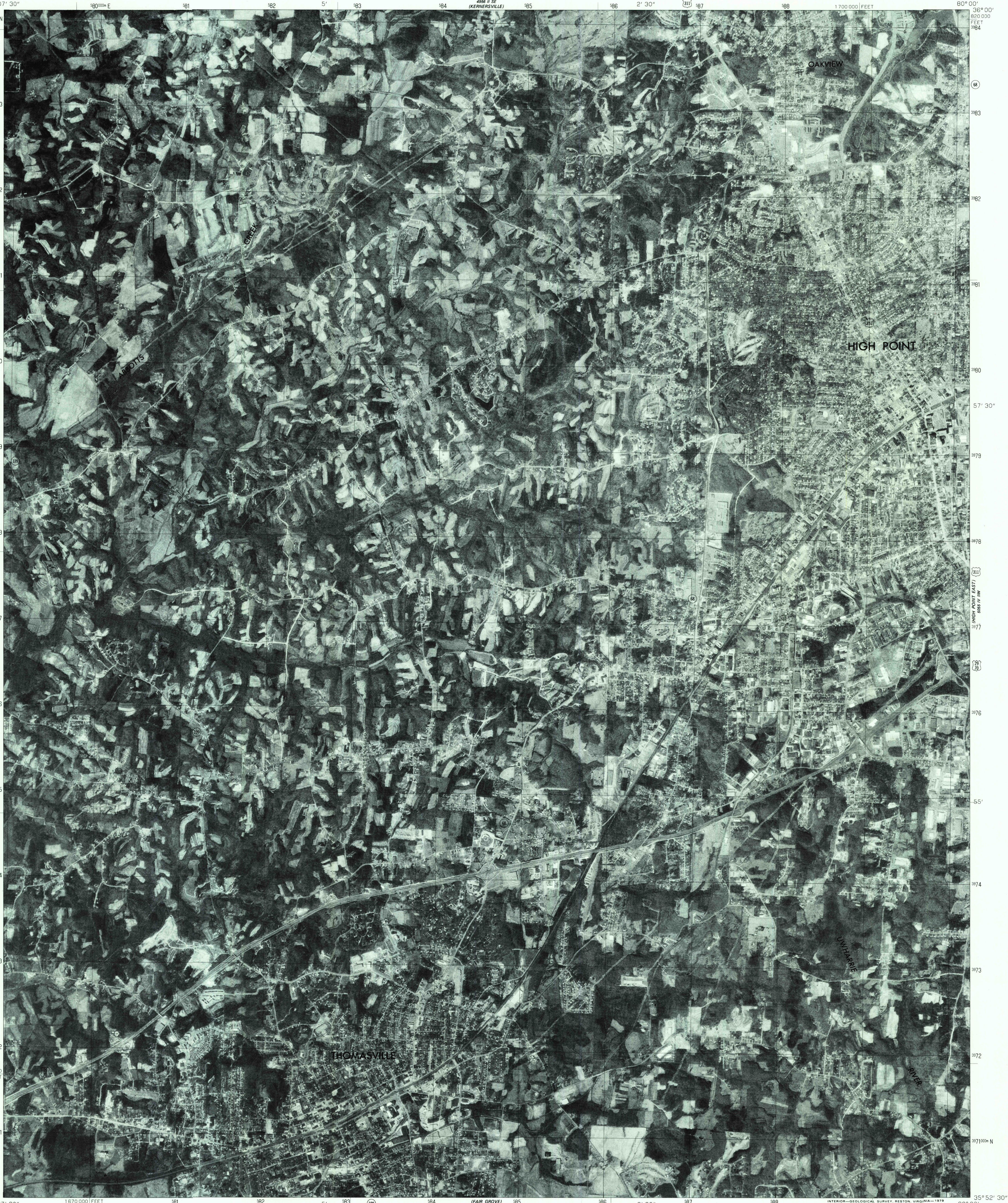
UNITED STATES
DEPARTMENT OF THE INTERIOR
GEOLOGICAL SURVEY



STATE OF NORTH CAROLINA
DEPARTMENT OF NATURAL RESOURCES
AND COMMUNITY DEVELOPMENT
RALEIGH, NORTH CAROLINA

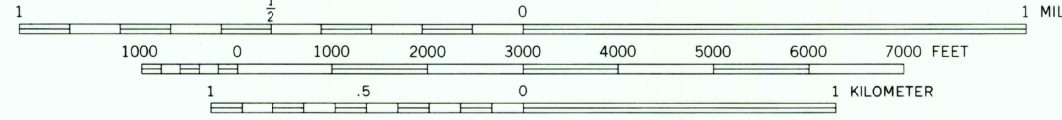
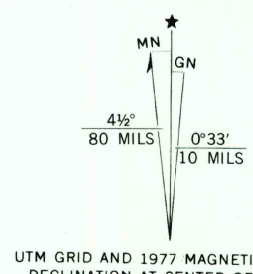
HIGH POINT WEST QUADRANGLE
NORTH CAROLINA
7.5 MINUTE SERIES ORTHOPHOTOQUAD

80° 00' 00" W
36° 00' 00" N
800 M
1:24,000



Produced and published by the Geological Survey

Orthophoto prepared from 1:80,000-scale
aerial photograph taken March 15, 1977
Projection and 10,000-foot grid ticks: North Carolina
coordinate system (Lambert conformal conic)
1000-meter Universal Transverse Mercator grid,
zone 17. 1927 North American datum
Photomicroscopy rectified by optical scanning
which may produce double or mismatched images;
use the mean of image positions for map point



THIS MAP COMPLIES WITH NATIONAL MAP ACCURACY STANDARDS
FOR SALE BY U.S. GEOLOGICAL SURVEY, RESTON, VIRGINIA 22092



PRINCIPAL NUMBERED HIGHWAYS
Interstate Route U. S. Route State Route

This quadrangle area also covered by
1:24,000-scale topographic map

HIGH POINT WEST, N. C.
N3552.5-W8000/7.5

USGS
Historical File
Topographic Division

1977
AMS 4955 I NE-SERIES V042

JUN 26 1979

1000