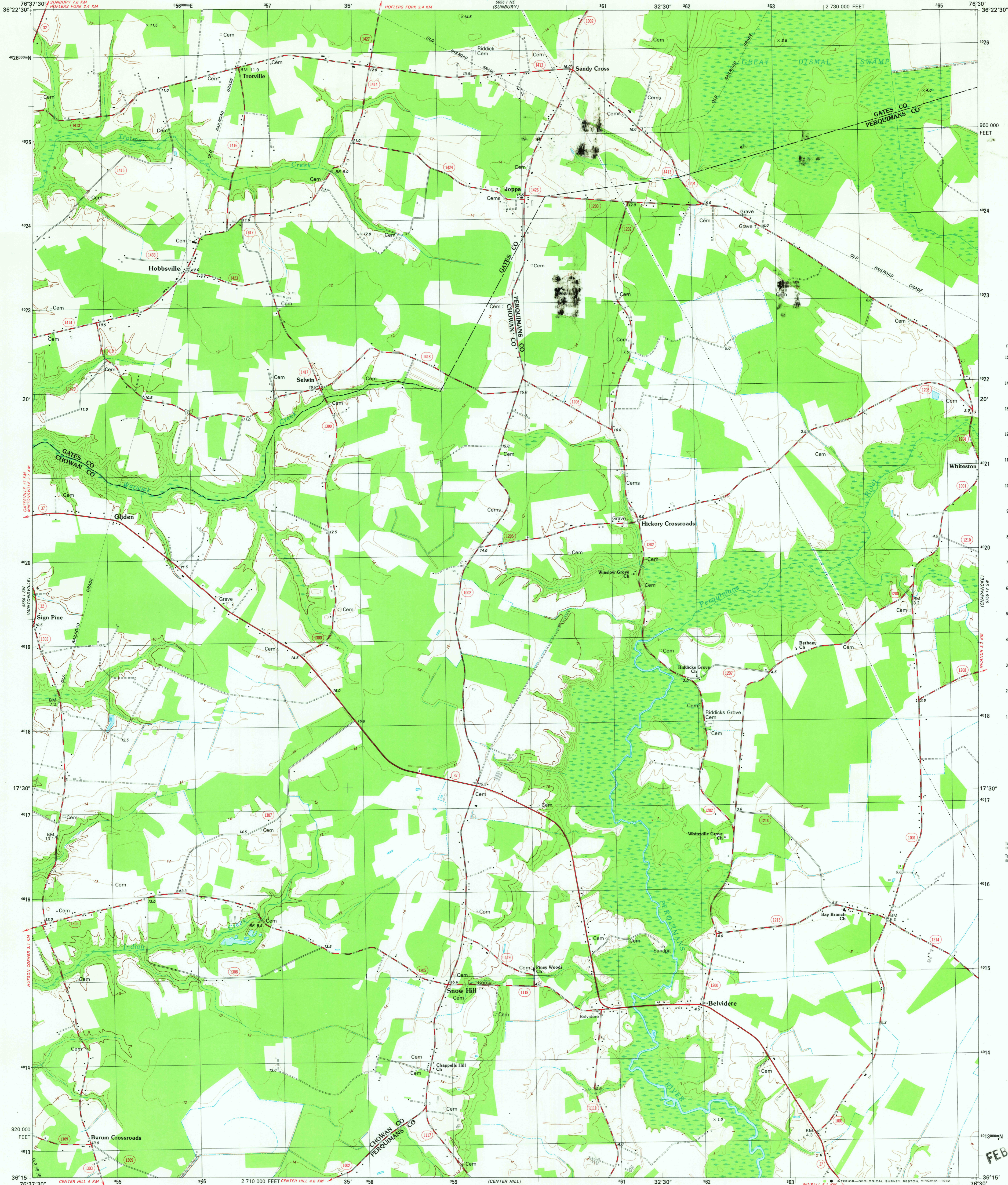


UNITED STATES
DEPARTMENT OF THE INTERIOR
GEOLOGICAL SURVEY

STATE OF NORTH CAROLINA
DEPARTMENT OF NATURAL RESOURCES
AND COMMUNITY DEVELOPMENT
RALEIGH, NORTH CAROLINA

HOBBSVILLE QUADRANGLE
NORTH CAROLINA
7.5 MINUTE SERIES (TOPOGRAPHIC)
SE/4 BECKFORD 15' QUADRANGLE



CONVERSION
SCALES



Feet	Meters
1	0.3048
2	0.6096
3	0.9144
4	1.2192
5	1.5240
6	1.8288
7	2.1336
8	2.4384
9	2.7432
10	3.0480

To convert feet to meters
multiply by 0.3048

To convert meters to feet
multiply by 3.2808

Mapped, edited, and published by the Geological Survey

Control by USGS, NOS/NOAA, and USCE

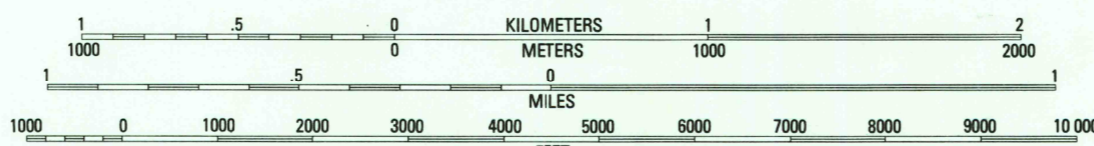
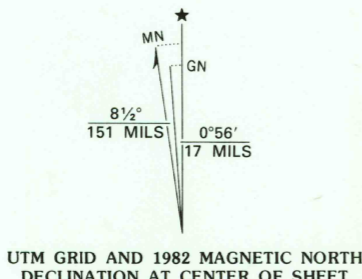
Topography by photogrammetric methods from aerial photographs
taken 1975. Field checked 1976. Map edited 1982

Projection and 10,000-foot grid ticks: North Carolina coordinate
system (Lambert conformal conic)

1000-meter Universal Transverse Mercator grid, zone 18
1927 North American Datum

To place on the predicted North American Datum 1983
move the projection lines 11 meters south and
29 meters west as shown by dashed corner ticks

Short dashed blue lines indicate elliptical bay outlines
visible on aerial photographs



CONTOUR INTERVAL 2 METERS
SUPPLEMENTARY CONTOUR INTERVAL 1 METER
DASHED SUPPLEMENTARY CONTOURS ARE APPROXIMATE
NATIONAL GEODETIC VERTICAL DATUM OF 1929
CONTROL ELEVATIONS SHOWN TO THE NEAREST 0.1 METER
OTHER ELEVATIONS SHOWN TO THE NEAREST 0.5 METER

THIS MAP COMPLIES WITH NATIONAL MAP ACCURACY STANDARDS
FOR SALE BY U. S. GEOLOGICAL SURVEY, RESTON, VIRGINIA 22092
A FOLDER DESCRIBING TOPOGRAPHIC MAPS AND SYMBOLS IS AVAILABLE ON REQUEST



QUADRANGLE LOCATION
CONTOURS AND ELEVATIONS
IN METERS

ROAD CLASSIFICATION

Primary highway, hard surface
Secondary highway, hard surface
Interstate Route
U. S. Route
State Route
Light-duty road, hard or improved surface
Unimproved road
Interior-Geological Survey Reston, Virginia-1982

HOBBSVILLE, N. C.
SE/4 BECKFORD 15' QUADRANGLE
N3615-W7630/7.5

1982

DMA 5656 1 SE-SERIES W842

FEB 1 1983

RETURN TO:
USGS AND HISTORICAL MAP ARCHIVES
1980